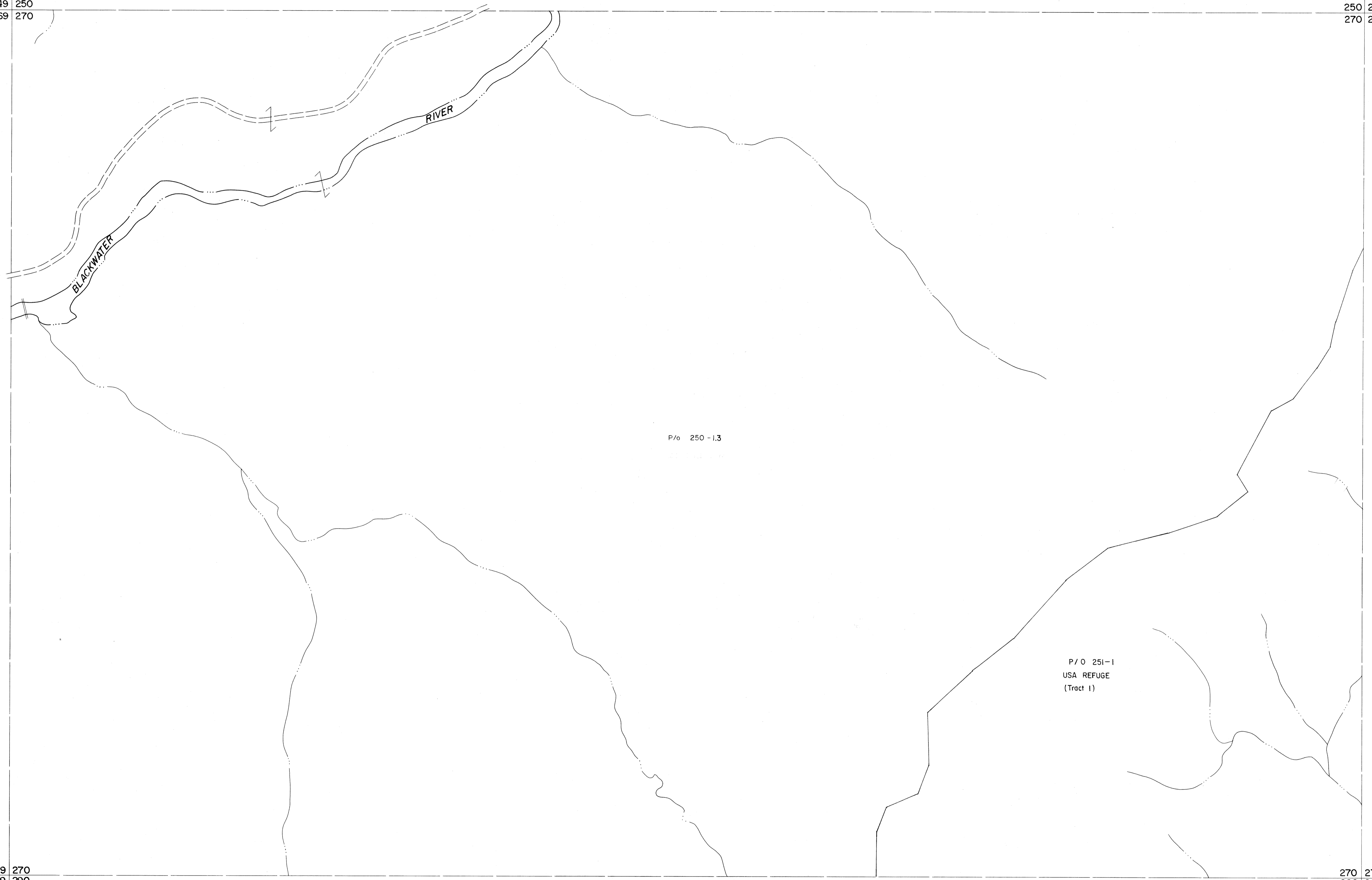


249 250
269 270

250 251
270 271



For Tax Purposes Only

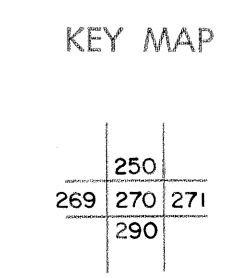
Prepared by
MICHAEL BAKER, JR., INC.
Consulting Engineers
Rochester, Pennsylvania

Legend

Property line	—————	Original lot line	-----
Edge of pavement or roadway	———	Deed lot number	(15)
Corporation line	-----	Parcel or index number	(27)
District line	-----	Improvement	○
County line	-----	Railroad	—+—

Revisions

1	Revised to 7-1-89	9	17
2	REV. TO 3-1-89	10	18
3	H&S 2/19/04	11	19
4		12	20
5		13	21
6		14	22
7		15	23
8		16	24



TUCKER COUNTY
STATE OF WEST VIRGINIA
Office of Assessor

DISTRICT

DAVIS

SHEET NO: 270

Date, Aerial Photography: November, 1961 Date, Map: Dec., 1962
Photo No: Scale: 1" = 400'