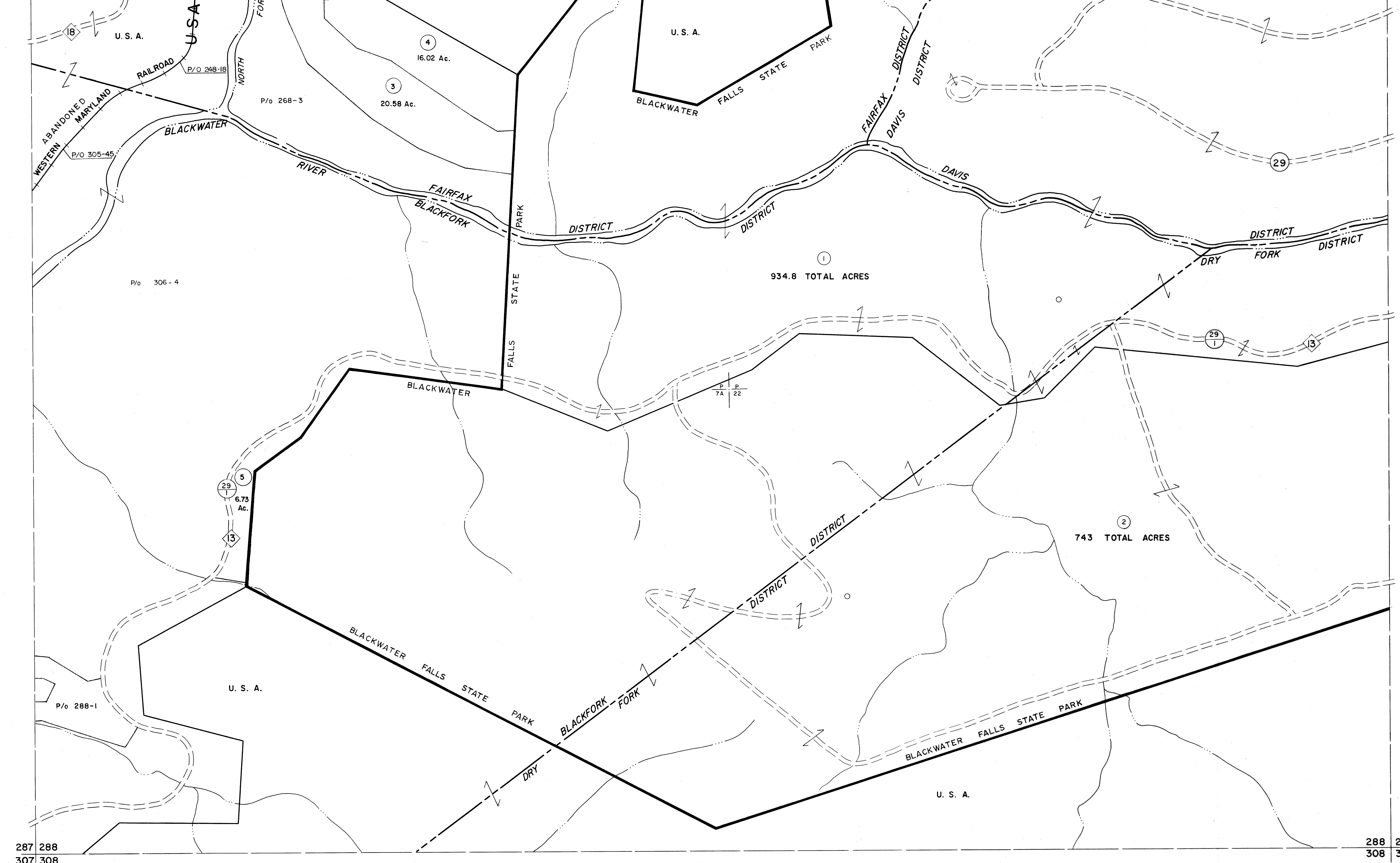


267 268
287 288

268 269
288 289



For Tax Purposes Only
 Prepared by
MICHAEL BAKER, JR., INC.
 Consulting Engineers
 Rochester, Pennsylvania

| Legend | |
|-----------------------------|------------------------|
| Property line | Original lot line |
| Edge of pavement or roadway | Dead lot number |
| Corporation line | Parcel or index number |
| District line | Improvement |
| County line | Railroad |

| Revisions | | | |
|-----------|------|---------|-----|
| 1 | OGIS | 1/1/91 | DSH |
| 2 | OGIS | 1/28/93 | DSH |
| 3 | ESI | 2/20/03 | REK |
| 4 | | | |
| 5 | | | |
| 6 | | | |
| 7 | | | |
| 8 | | | |

KEY MAP

TUCKER COUNTY
 STATE OF WEST VIRGINIA
 Office of Assessor

DISTRICT
BLACKFORK FAIRFAX
DAVIS DRY FORK
 SHEET NO: 288
 Date, Aerial Photography: November, 1961 Date, Map: Dec., 1962
 Photo No: Scale: 1" = 400'