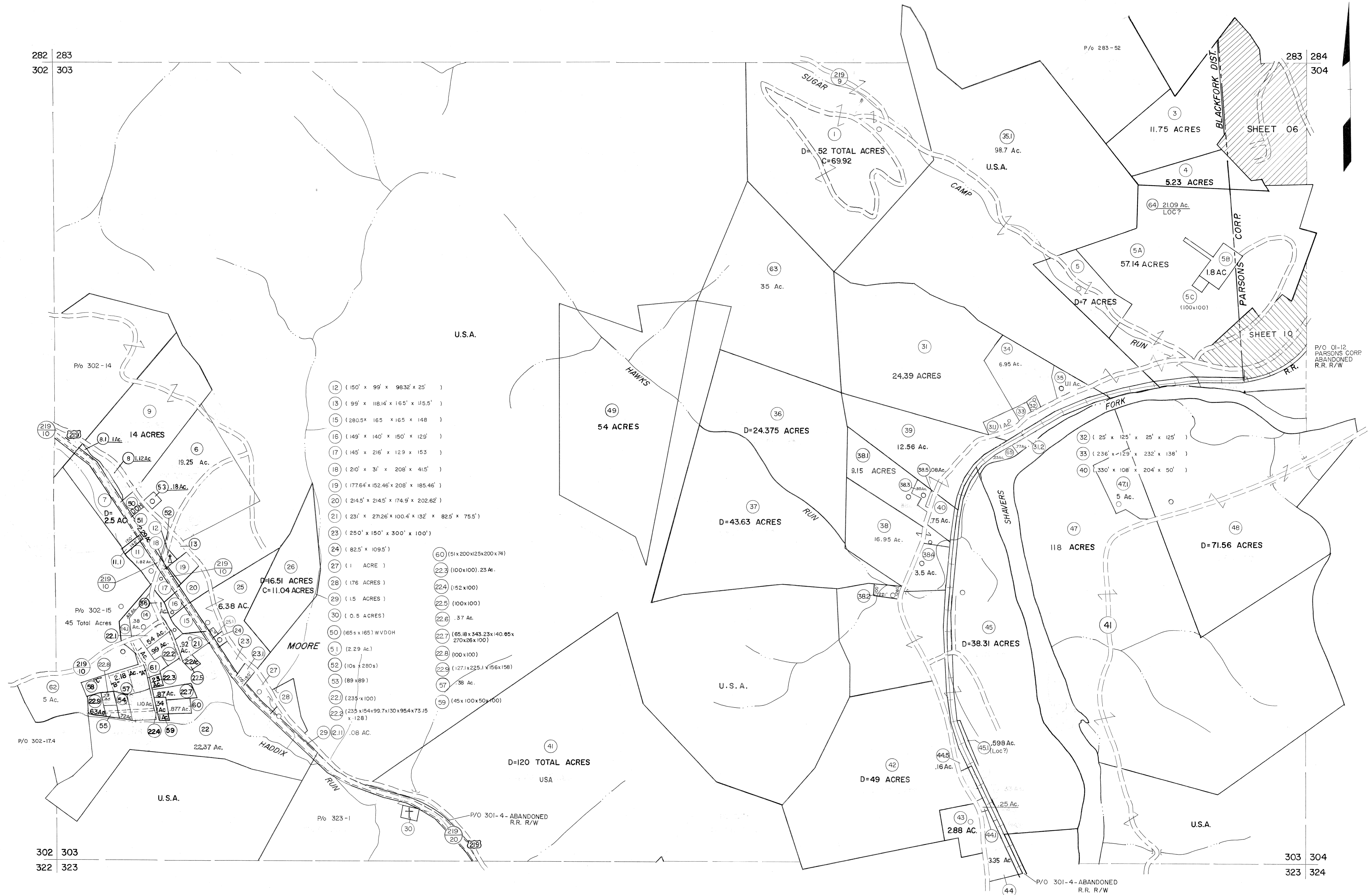


282 283
302 303

283 284
304



12	(150' x 99' x 9832' x 25')
13	(99' x 118.14' x 165' x 115.5')
15	(280.5' x 165' x 165' x 148')
16	(149' x 140' x 150' x 129')
17	(145' x 216' x 129' x 153')
18	(210' x 31' x 208' x 415')
19	(177.64' x 152.46' x 208' x 185.46')
20	(214.5' x 214.5' x 174.9' x 202.62')
21	(231' x 271.26' x 100.4' x 132' x 82.5' x 75.5')
23	(250' x 150' x 300' x 100')
24	(82.5' x 109.5')
27	(1 ACRE)
28	(176 ACRES)
29	(1.5 ACRES)
30	(0.5 ACRES)
50	(165' x 165' WVDOR)
51	(2.29 Ac.)
52	(106 x 280's)
53	(89 x 89)
22.1	(235' x 100')
22.2	(235' x 154' x 99.7' x 130' x 95.4' x 73.15' x 128')
29	(211) .08 AC.
60	(51 x 200 x 125 x 200 x 74')
22.3	(100 x 100). 23 Ac.
22.4	(152 x 100)
22.5	(100 x 100)
22.6	.37 Ac.
22.7	(85.18 x 343.23 x 140.85 x 270 x 26 x 100)
22.8	(100 x 100)
22.9	(127.1 x 225.1 x 156 x 158)
57	.38 Ac.
59	(45 x 100 x 50 x 100)

For Tax Purposes Only

Prepared by
MICHAEL BAKER, JR., INC.
Consulting Engineers
Rochester, Pennsylvania

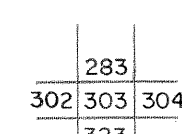
Legend

Property line	—	Original lot line	---
Edge of pavement or roadway	—	Deed lot number	(15)
Corporation line	---	Parcel or index number	(99)
District line	---	Improvement	o
County line	---	Railroad	+

Revisions

1	10-3-63	9	OGIS 1/2/91	DSH	17	SLS INC. 3/3/98	JWM
2	6-4-75	10	OGIS 3-19-92	TL	18	ESI 2/1/01	REK
3	Revised to 7-1-85	11	OGIS 1/29/93	DSH	19	ESI 2/8/02	REK
4	7-1-84	12	OGIS 12/11/93	SAJ	20	ESI 2/20/03	REK
5	July, 1985	13	OGIS 4-95	HD	21	H&S 2/19/04	REK
6	July, 1985	14	O.G.I.S 4-1-96	J.E.B	22	3/21/05	S.B.H
7	Revised to 7-1-87	15	SLS INC. - DDC 5/97		23		
8	Revised to 3-1-89	16	SLS INC. - DDC 7/97		24		

KEY MAP



TUCKER COUNTY

STATE OF WEST VIRGINIA

Office of Assessor

DISTRICT

BLACKFORK

SHEET NO: 303

Date, Aerial Photography: November, 1961 Date, Map: Dec, 1962
Photo No: Scale: 1" = 400'