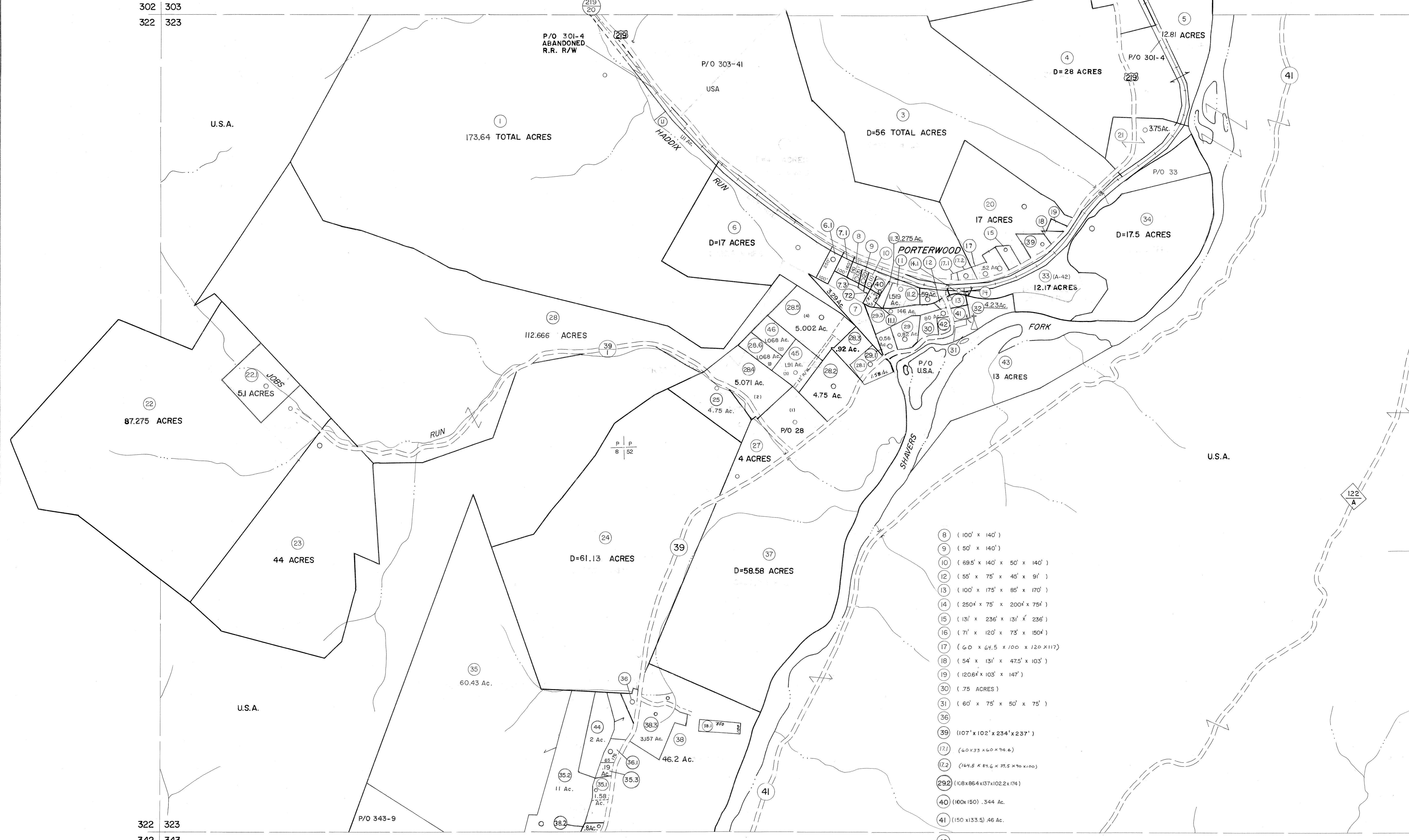


302 303
322 323

303 304
323 324



322 323
342 343

323 324
343 344

For Tax Purposes Only

Prepared by
MICHAEL BAKER, JR., INC.
Consulting Engineers
Rochester, Pennsylvania

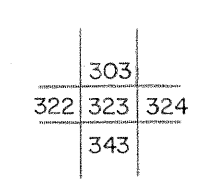
Legend

Property line	—	Original lot line	- - - - -
Edge of pavement or roadway	—	Deed lot number	(15)
Corporation line	—	Parcel or index number	(19)
District line	—	Improvement	○
County line	—	Railroad	—+—

Revisions

1	10-3-63	9	REV. TO 3-1-89	R.E.B.	17	SLS INC.	3/2/00	J.W.M.
2	4-4-75	10	OGIS 1/5/91	DSH	18	ESI	2/1/01	REK
3	11-27-78	11	OGIS 3-19-92	TL	19	ESI	2/20/03	REK
4	Revised to 7-1-85	12	OGIS 1/30/93	DSH	20	HAS	2/19/04	
5	7-1-84	13	O.G.I.S. 4-1-96	J.E.B.	21		3/21/05	S.B.H.
6	July 1985	14	SLS INC. - DDC	5/97	22			
7	July 1986	15	SLS INC.	3/3/98	J.W.M.	23		
8	Revised to 7-1-87	16	SLS INC.	1/28/99	DSW	24		

KEY MAP



TUCKER COUNTY

STATE OF WEST VIRGINIA

Office of Assessor

DISTRICT

BLACKFORK

SHEET NO: 323

Date, Aerial Photography: November, 1961 Date, Map: Dec, 1962
Photo No: Scale: 1" = 400'