

311|312  
331|332

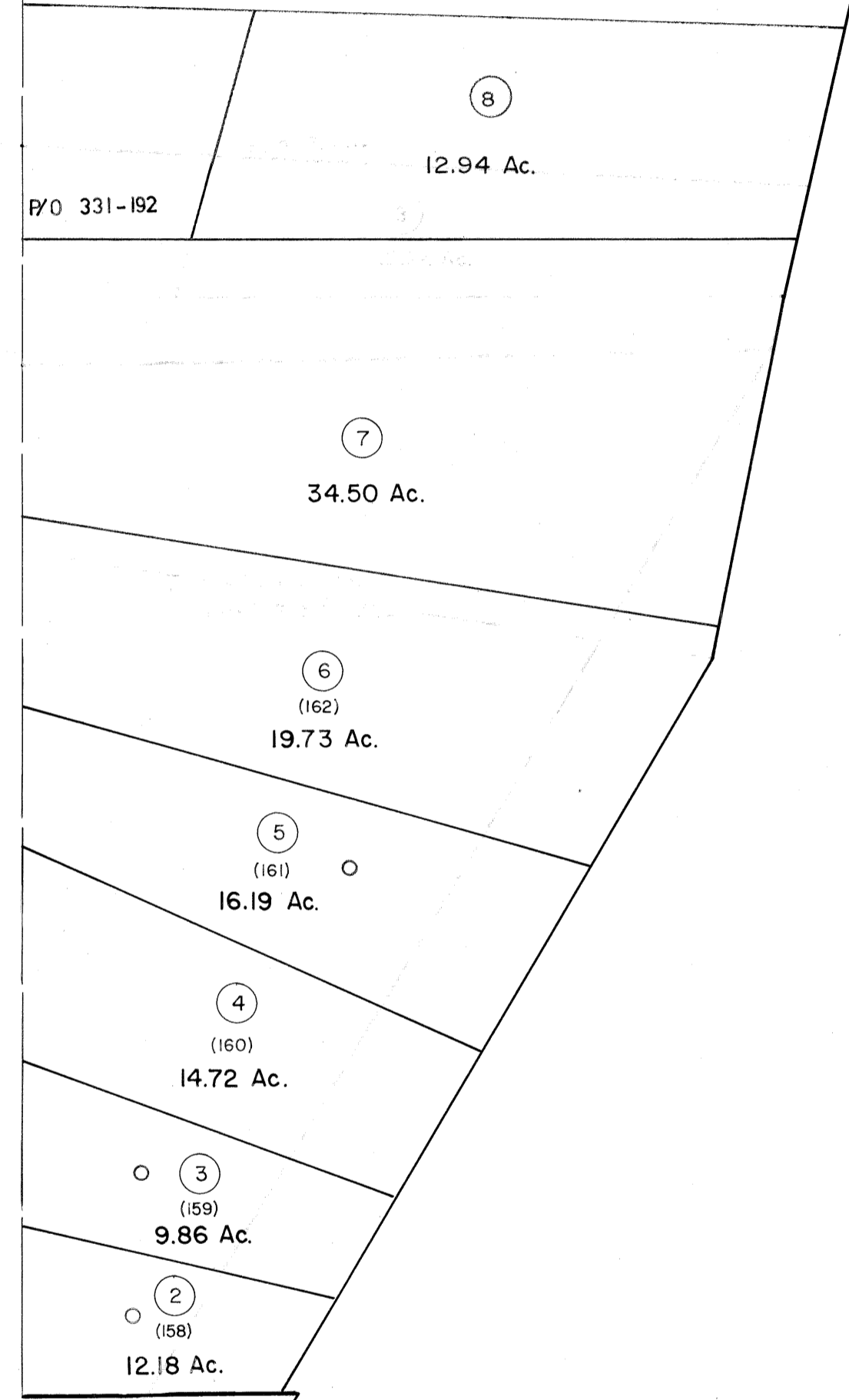
312|313  
332|333

P/o 331-2

P/O 331-192

331|332  
351|352

332|333  
352|353

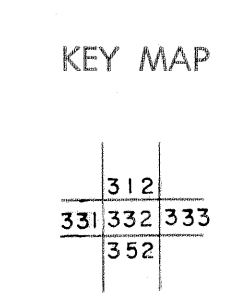


For Tax Purposes Only

Prepared by  
MICHAEL BAKER, JR., INC.  
Consulting Engineers  
Rochester, Pennsylvania

| Legend                      |           |
|-----------------------------|-----------|
| Property line               | —————     |
| Edge of pavement or roadway | ——— ———   |
| Corporation line            | -----     |
| District line               | - - - - - |
| County line                 | —————     |
| Original lot line           | —————     |
| Dead lot number             | (5)       |
| Parcel or index number      | (2)       |
| Improvement                 | ○         |
| Railroad                    | —+—+—+—   |

| Revisions |                        |
|-----------|------------------------|
| 1         | Revised to 7-1-88      |
| 2         | July, 1986 TRL         |
| 3         | REV. TO 3-1-89 R.E.B.  |
| 4         | OGIS 1/5/91 DSH        |
| 5         | OGIS 3-19-92 TL        |
| 6         | OGIS 1/31/93 DSH       |
| 7         | O.G.I.S. 4-1-96 J.E.B. |
| 8         | SLS INC. 1/28/99 DSW   |



TUCKER COUNTY  
STATE OF WEST VIRGINIA  
Office of Assessor

|  |                       |
|--|-----------------------|
| DISTRICT                                 | DRY FORK              |
| SHEET NO: 332                            |                       |
| Date, Aerial Photography: November, 1961 | Date, Map: Dec., 1962 |
| Photo No:                                | Scale: 1" = 400'      |