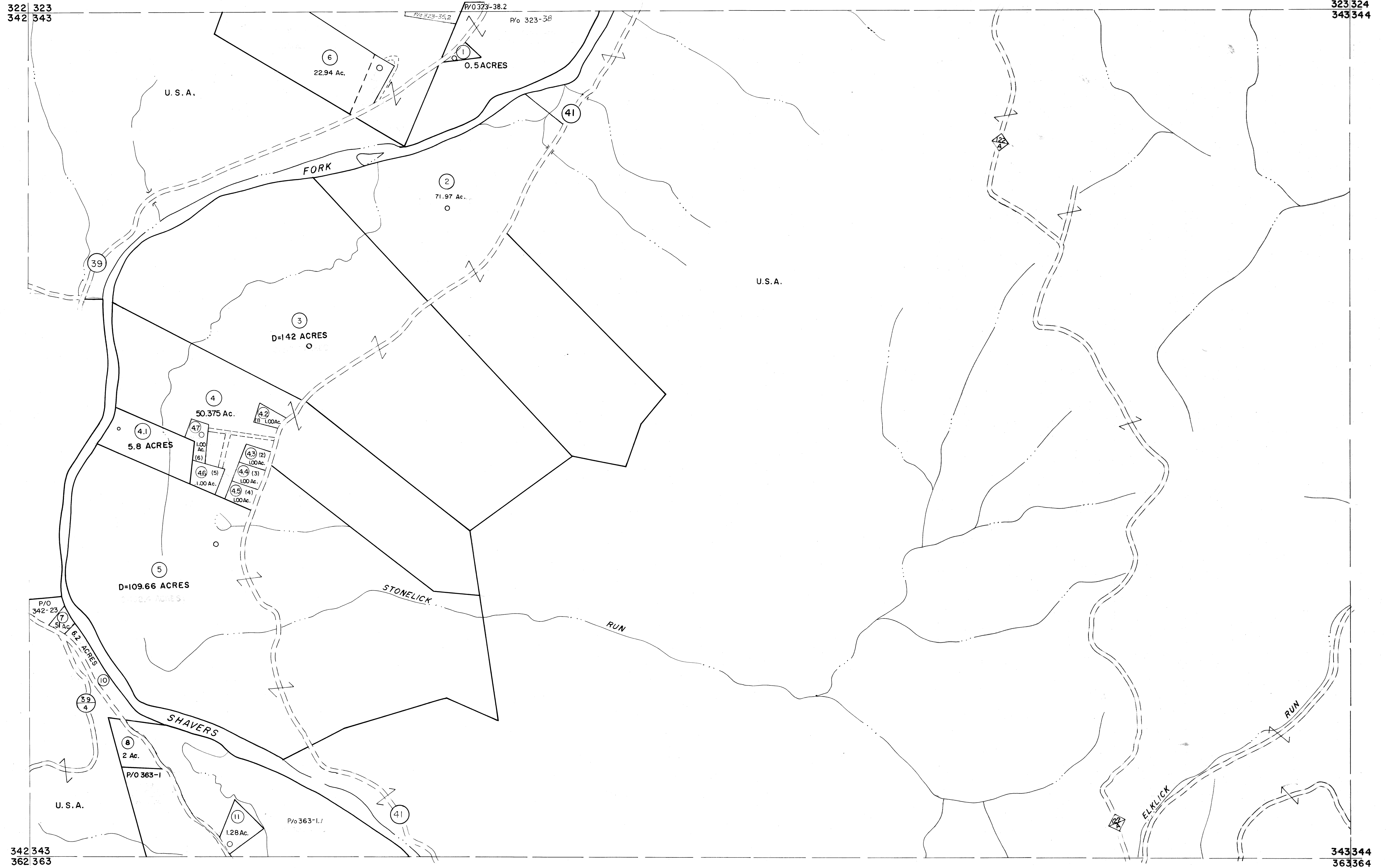


322 323
342 343

323 324
343 344



342 343
362 363

343 344
363 364

For Tax Purposes Only

Prepared by
MICHAEL BAKER, JR., INC.
Consulting Engineers
Rochester, Pennsylvania

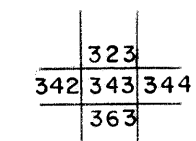
Legend

| | | | |
|-----------------------------|---|------------------------|-----------|
| Property line | — | Original lot line | - - - - - |
| Edge of pavement or roadway | — | Deed lot number | (15) |
| Corporation line | — | Parcel or index number | (39) |
| District line | — | Improvement | o |
| County line | — | Railroad | —+— |

Revisions

| No. | Description | Date | By |
|-----|-----------------------|------|-----|
| 1 | 1/1-78 BAH | 9 | ESI |
| 2 | Revised to 7-1-83 | 10 | ESI |
| 3 | July 1985 | 11 | |
| 4 | Revised to 7-1-87 | 12 | |
| 5 | OGIS 1/5/91 DSH | 13 | |
| 6 | OGIS 3-19-92 TL | 14 | |
| 7 | O.G.I.S. 4-1-96 J.E.B | 15 | |
| 8 | SLS INC. - DDC 5/97 | 16 | |

KEY MAP



TUCKER COUNTY
STATE OF WEST VIRGINIA
Office of Assessor

DISTRICT
BLACKFORK

SHEET NO: 343

Date, Aerial Photography: November, 1961 Date, Map: Dec., 1962
Photo No: Scale: 1" = 400'