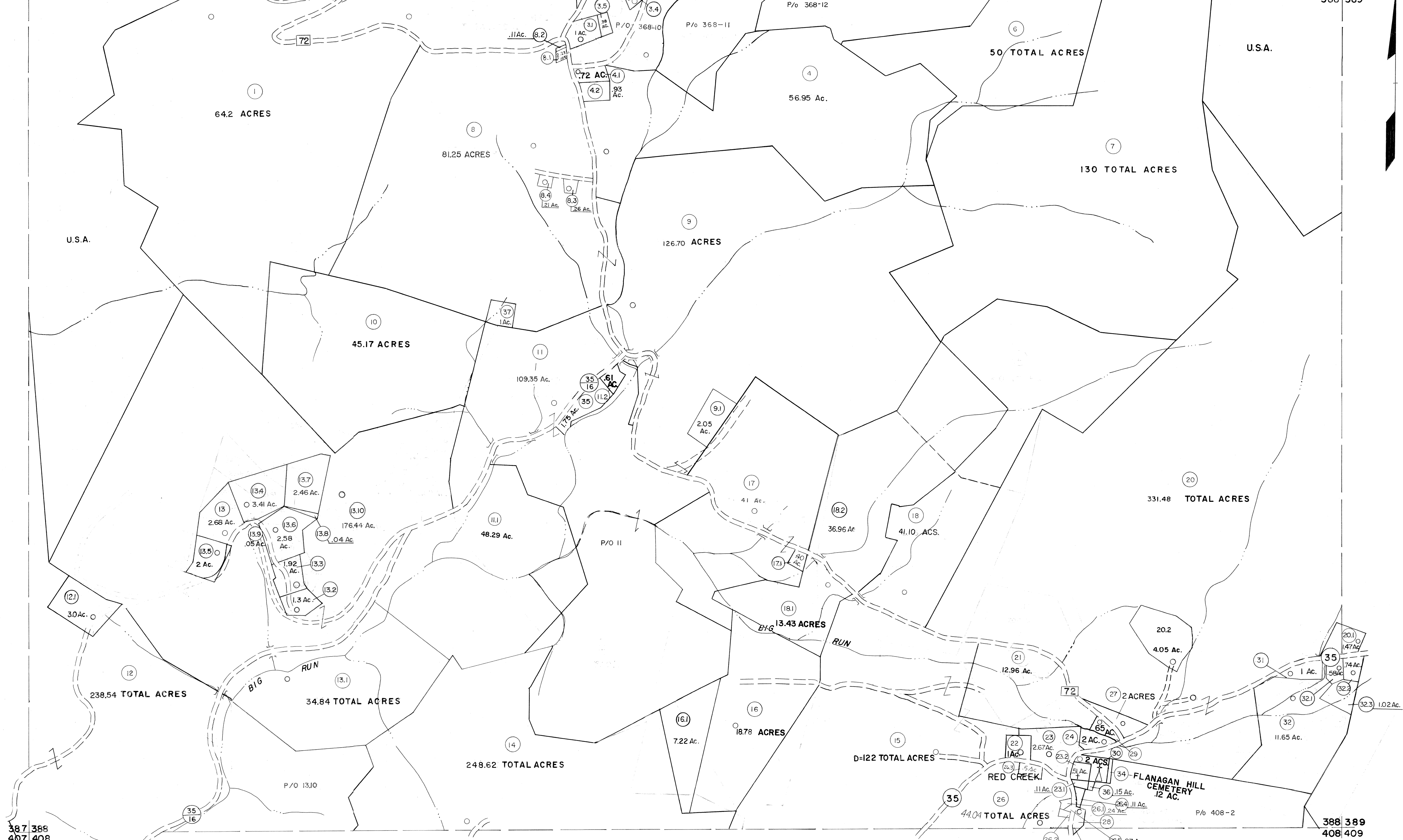


367 368  
387 388

368 369  
388 389



387 388  
407 408

388 389  
408 409

- 22 (1 ACRE)
- 25 (132' x 49' x 148' x 115')
- 27 (49' x 132' x 115' x 33' x 313')
- 28 (165' x 66' x 274' x 214')
- 29 (66' x 66')
- 30 (100' x 120' x 99' x 132' (D) x 165' (S))
- 31 (165' x 181' x 66' x 165' x 99' x 16.5')
- 32 (28' x 184')

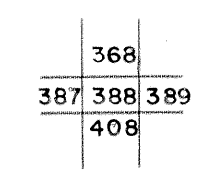
Legend

Property line	—————	Original lot line	-----
Edge of pavement or roadway	-----	Deed lot number	(15)
Corporation line	-----	Parcel or index number	(16)
District line	-----	Improvement	(17)
County line	-----	Railroad	(18)

Revisions

1	10-3-63	9	Rev. to 3-1-89	REB	17	SLS INC. 3/4/98	JWM
2	6-3-66	10	OGIS 1/6/91	DSH	18	SLS INC. 1/28/99	DSW
3	11-27-78	11	OGIS 3-19-92	TL	19	SLS INC. 2/21/00	JAW
4	REV. TO 7-1-83	12	OGIS 2/1/93	DSH	20	ESI 2/2/01	REK
5	7-1-84	13	OGIS 12/12/93	SAJ	21	ESI 2/20/02	REK
6	REV. TO 7-1-85	14	OGIS 2-95	HD	22	3/21/05	S.B.H.
7	July, 1986	15	O.G.I.S. 4-1-96	J.E.B.	23	3/28/06	S.B.H.
8	Revised to 7-1-87	16	SLS INC. - DDC 5/97		24	3/24/07	S.B.H.

KEY MAP



**TUCKER COUNTY**  
STATE OF WEST VIRGINIA  
Office of Assessor

DISTRICT

**DRY FORK**

**SHEET NO: 388**

Date, Aerial Photography: Nov. 1961  
Photo No: \_\_\_\_\_  
Date, Map: Dec. 1962  
Scale: 1" = 400'

For Tax Purposes Only

Prepared by  
**MICHAEL BAKER, JR., INC.**  
Consulting Engineers  
Rochester, Pennsylvania