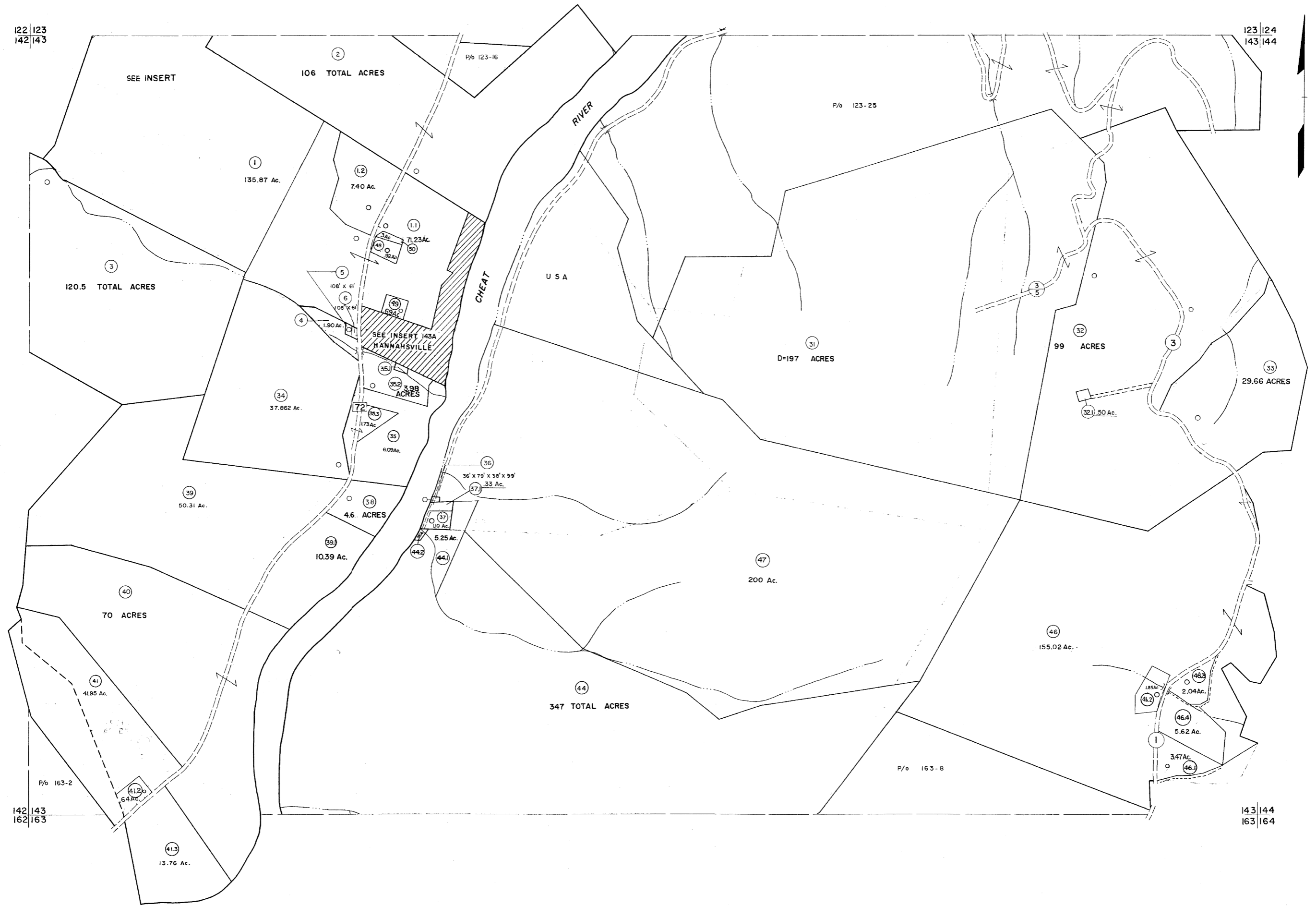


122 123
142 143

123 124
143 144



142 143
162 163

143 144
163 164

For Tax Purposes Only

Prepared by
MICHAEL BAKER, JR., INC.
Consulting Engineers
Rochester, Pennsylvania

Legend	
Property line	Original lot line
Edge of pavement or roadway	Deed lot number
Corporation line	Parcel or index number
District line	Improvement
County line	Railroad

Revisions			
1	6-3-64	9	OGIS 1/24/93 DSH
2	11-16-78	10	OGIS 12/9/93 SAJ
3	7-1-83	11	D.G.I.S 4-1-96 J.E.B
4	7-1-84	12	SLS INC. - DDC 5/97
5	REV TO 7-1-85	13	SLS INC. 2/19/98 DSW
6	REV TO 3-1-89	14	SLS INC. 1/26/99 DSW
7	OGIS 12/30/90 DSH	15	ESI 1/30/01 REK
8	OGIS 3-19-92 TL	16	ESI 2/7/02 REK
17	ESI 2/20/03 REK	18	HBS 2/22/04
19	3/21/05	20	3/24/07
21	6-21-09	22	
23		24	



TUCKER COUNTY
STATE OF WEST VIRGINIA
Office of Assessor

DISTRICT	LICKING
SHEET NO:	143
Date, Aerial Photography:	November, 1961
Photo No:	
Date, Map:	Dec., 1962
Scale:	1" = 400'