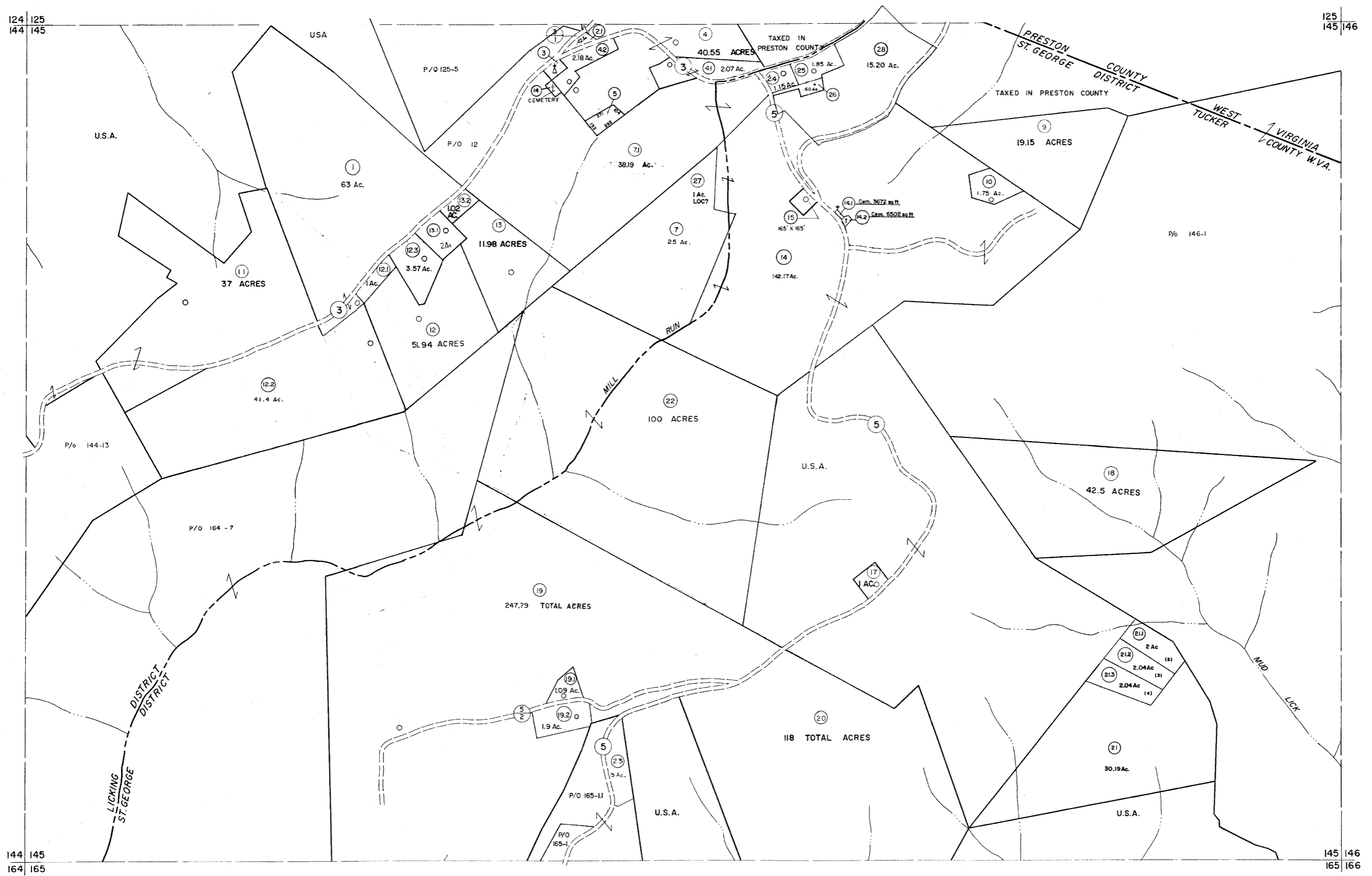


124 125
144 145

125 146
145 146



144 145
164 165

145 146
165 166

For Tax Purposes Only

Prepared by
MICHAEL BAKER, JR., INC.
Consulting Engineers
Rochester, Pennsylvania

Legend

Property line ————
 Edge of pavement or roadway - - - - -
 Corporation line - - - - -
 District line - - - - -
 County line - - - - -

Original lot line ————
 Dead lot number (15)
 Parcel or index number (19)
 Improvement (O)
 Railroad (—+—+—+—)

Revisions

1	6-3-64	9	OGIS	1/24/93	DSH	17	ESI	2/7/02	REK
2	6-9-75	J.C.	10	OGIS	12/9/93	SAJ	18	3/28/06	SBH
3	11-16-78	D.G.	11	O.G.I.S	4-1-96	J.E.B.	19	3/24/07	SBH
4	Revised to 7-1-89		12	SLS INC.	DDC	5/97	20	6-22-08	H 45
5	7-1-84	L.E.S.	13	SLS INC.	2/19/98	DSW	21	6-21-09	H 45
6	REV TO 3-1-89	NCS	14	SLS INC.	1/27/99	DSW	22		
7	OGIS	12/30/90	DSH	15	SLS INC.	3/1/00	JWM	23	
8	OGIS	3-19-92	TL	16	ESI	1/30/01	REK	24	

KEY MAP



TUCKER COUNTY
 STATE OF WEST VIRGINIA
 Office of Assessor

DISTRICT **LICKING ST. GEORGE**

SHEET NO: 145

Date, Aerial Photography: November, 1961 Date, Map: Dec., 1962
 Photo No: Scale: 1"=400'