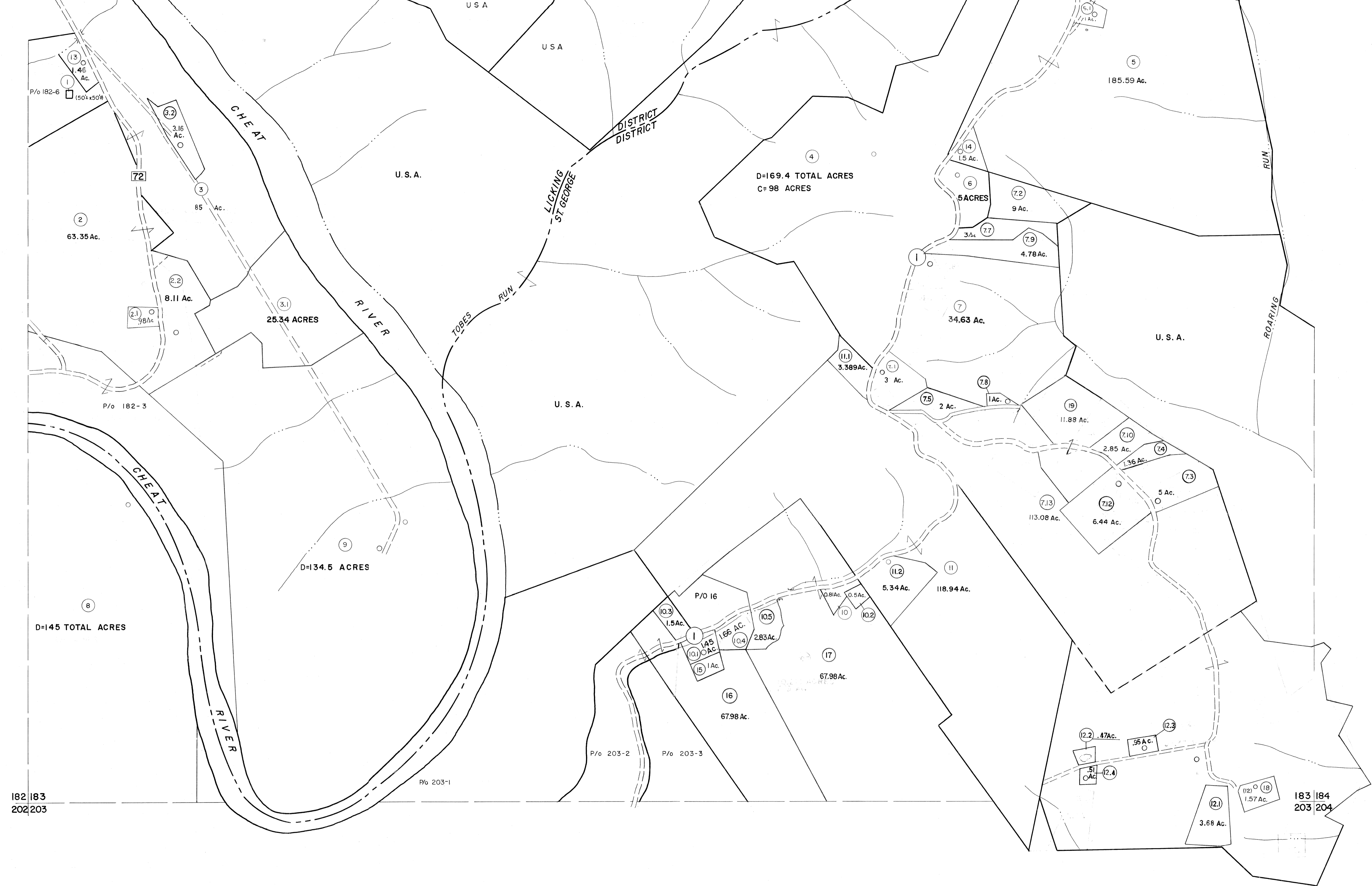


162 | 163  
182 | 183

163 | 164  
183 | 184



182 | 183  
202 | 203

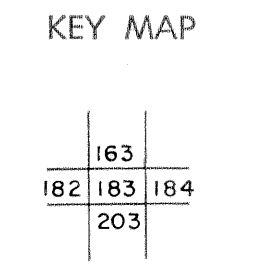
183 | 184  
203 | 204

For Tax Purposes Only

Prepared by  
MICHAEL BAKER, JR., INC.  
Consulting Engineers  
Rochester, Pennsylvania

Legend	
Property line	—
Edge of pavement or roadway	—
Corporation line	—
District line	—
County line	—
Original lot line	- - - -
Deed lot number	(15)
Parcel or index number	(22)
Improvement	○
Railroad	—+—

Revisions			
1	6-6-75	JC	9
2	11/20/78	DG	10
3	7-1-83	C.R.	11
4	7-1-84	L.E.S.	12
5	REV TO 7-1-86	NCS	13
6	REV TO 7-1-87	DSW	14
7	REV TO 3-1-89	NCS	15
8	OGIS 12/30/90	DSH	16
9	OGIS 3-19-92	TL	17
10	OGIS 1/24/93	DSH	18
11	OGIS 12/11/93	SAJ	19
12	SLS INC. 2/19/98	DSW	20
13	HAS 2/22/04		21
14	3/21/05	S&H	22
15	3/24/07	S&H	23
16			24



**TUCKER COUNTY**  
STATE OF WEST VIRGINIA  
Office of Assessor

DISTRICT **LICKING ST. GEORGE**

SHEET NO: 183

Date, Aerial Photography: Nov., 1961  
Photo No: \_\_\_\_\_

Date, Map: Dec., 1962  
Scale: 1" = 400'