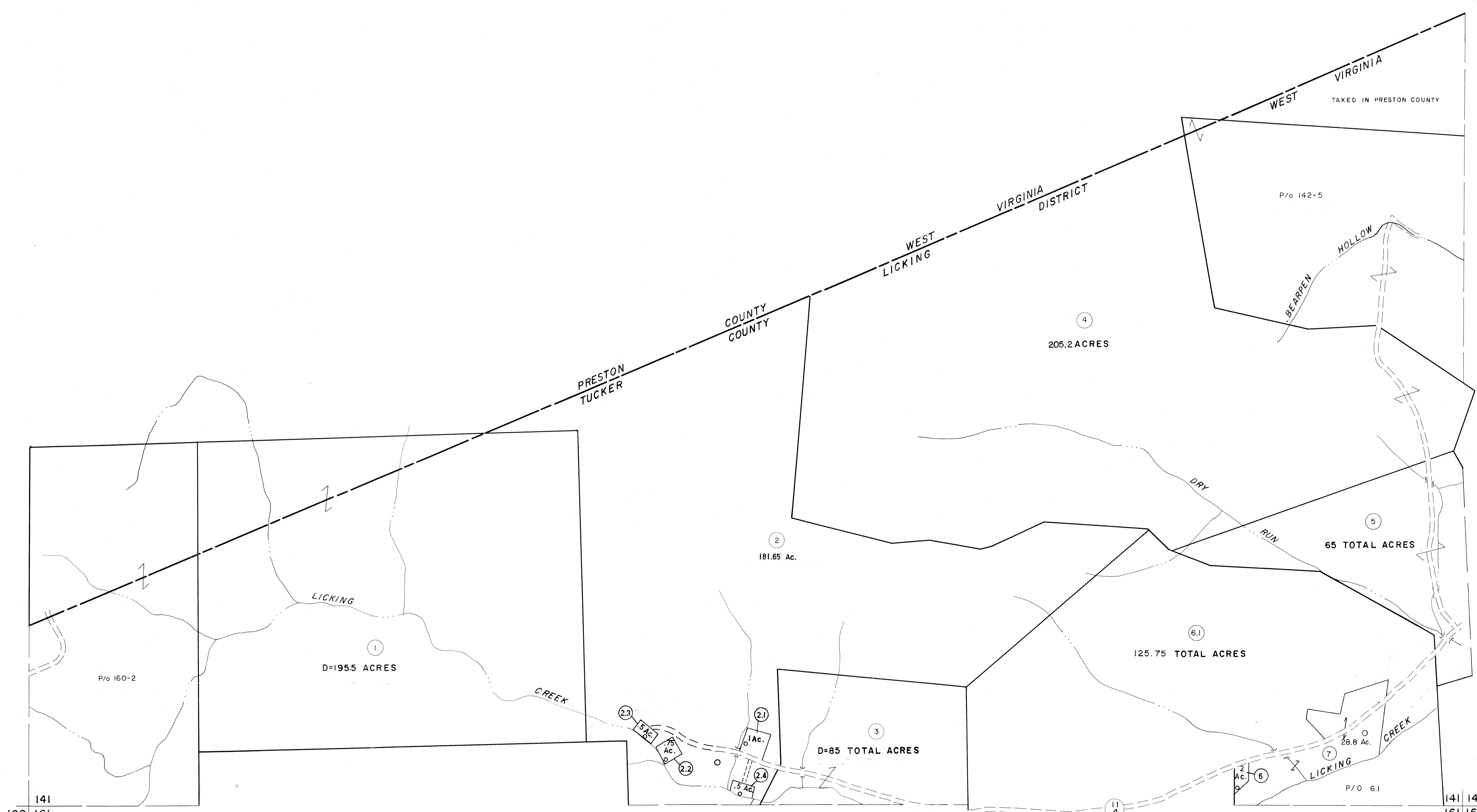


141

122  
141 142

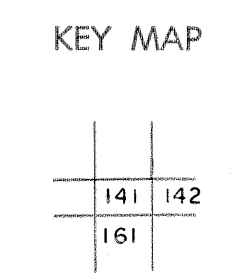


For Tax Purposes Only

Prepared by  
**MICHAEL BAKER, JR., INC.**  
 Consulting Engineers  
 Rochester, Pennsylvania

Legend	
Property line	Original lot line
Edge of pavement or roadway	Deed lot number
Corporation line	Parcel or index number
District line	Improvement
County line	Railroad

Revisions	
1 Revised to 7-1-83	9
2 7-1-84 L.E.S.	10
3 REV. TO 7-1-86 NCS	11
4 OGIS 12/29/90 DSH	12
5 OGIS 3-19-92 TL	13
6 OGIS 4-95 HD	14
7	15
8	16



**TUCKER COUNTY**  
 STATE OF WEST VIRGINIA  
 Office of Assessor

DISTRICT	<b>LICKING</b>
SHEET NO:	<b>141</b>
Date, Aerial Photography:	November, 1961
Date, Map:	Dec., 1962
Photo No:	
Scale:	1" = 400'