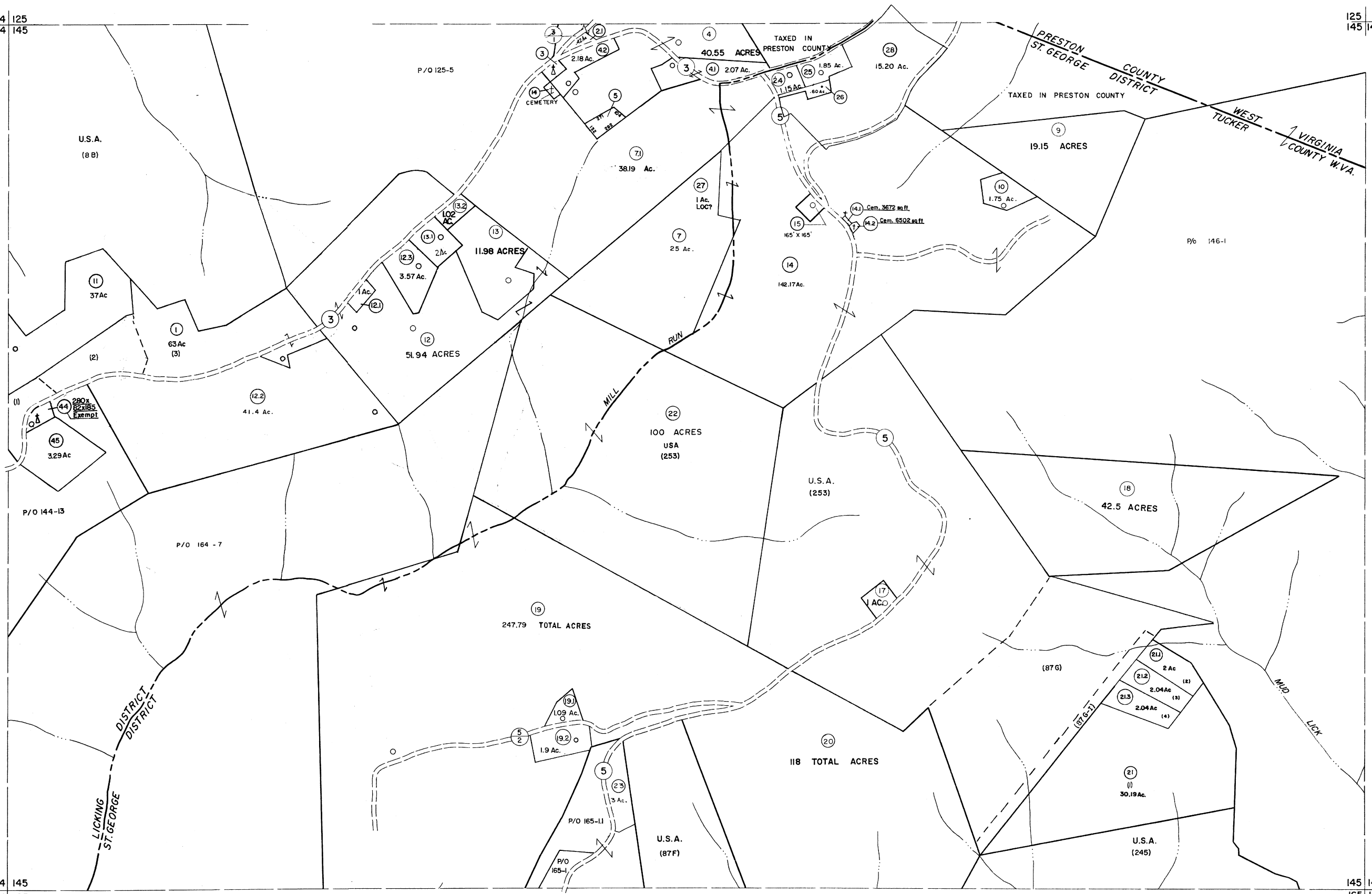


124 125
144 145

125 146
145 146

144 145
164 165

145 146
165 166



For Tax Purposes Only
 Prepared by
MICHAEL BAKER, JR., INC.
 Consulting Engineers
 Rochester, Pennsylvania

Legend	
Property line	———
Edge of pavement or roadway	———
Corporation line	———
District line	———
County line	———
Original lot line	———
Deed lot number	(15)
Parcel or index number	(99)
Improvement	○
Railroad	———

Revisions			
1	6-3-62	9	OGIS 1/24/93 DSH
2	6-9-75	10	OGIS 12/9/93 SAJ
3	11-16-78	11	O.G.I.S. 4-1-96 J.E.B
4	Revised to 7-1-88	12	SLS INC. - DDC 5/97
5	7-1-84	13	SLS INC. 2/19/98 DSW
6	REV. TO 3-1-89	14	SLS INC. 1/27/99 DSW
7	OGIS 12/30/90	15	SLS INC. 3/1/00 JWM
8	OGIS 3-19-92	16	ESI 1/30/01 REK
		17	ESI 2/7/02 REK
		18	3/28/06 SBH
		19	3/24/07 SBH
		20	6-22-08 H-45
		21	6-21-09 H-45
		22	5-8-10 H-45
		23	
		24	

KEY MAP

TUCKER COUNTY
 STATE OF WEST VIRGINIA
 Office of Assessor

DISTRICT **LICKING ST. GEORGE**
SHEET NO: 145
 Date, Aerial Photography: November, 1961 Date, Map: Dec., 1962
 Photo No: Scale: 1"=400'