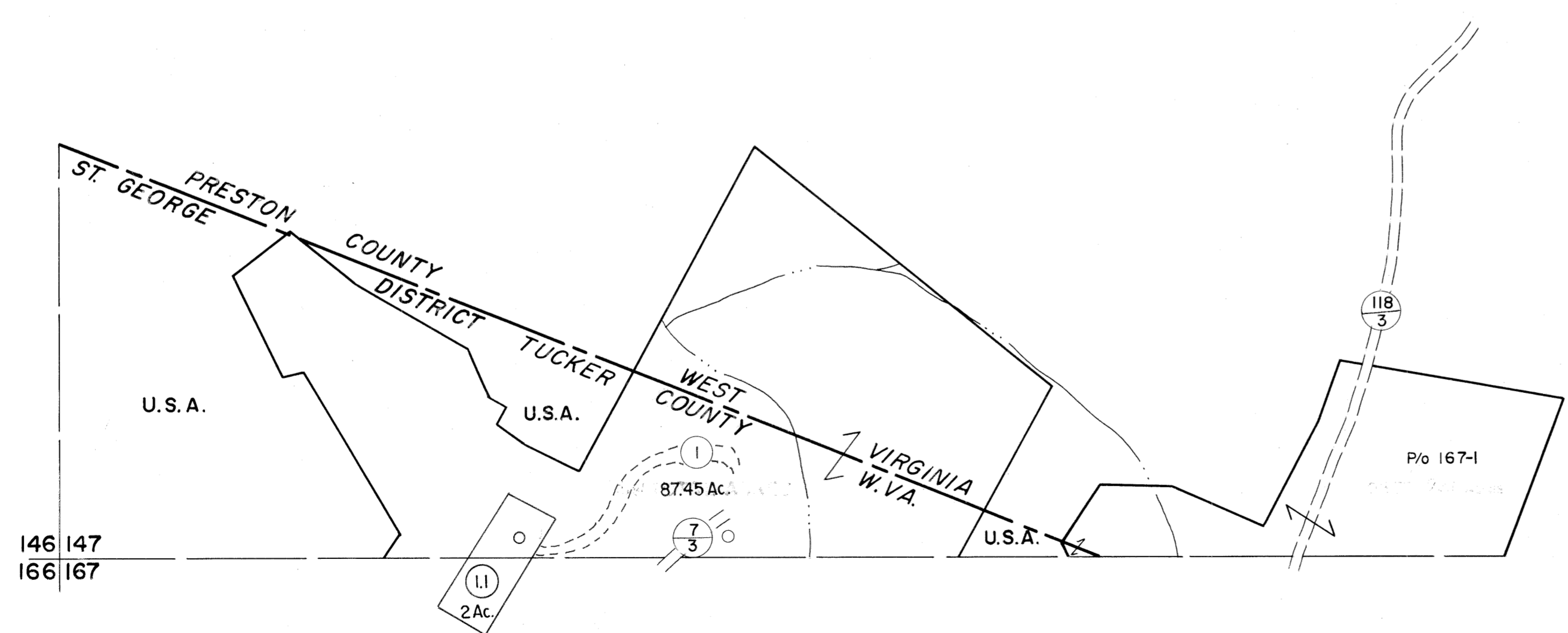
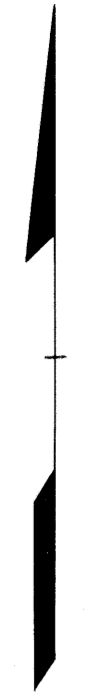


146|147

147



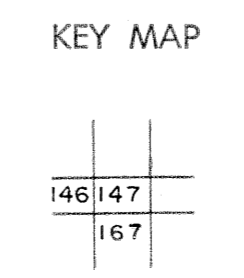
146|147
166|167

147
167|168

For Tax Purposes Only
 Prepared by
MICHAEL BAKER, JR., INC.
Consulting Engineers
 Rochester, Pennsylvania

Legend	
Property line	-----
Edge of pavement or roadway	-----
Corporation line	-----
District line	-----
County line	-----
Original lot line	-----
Deed lot number	(15)
Parcel or index number	(99)
Improvement	o
Railroad	-----

Revisions			
1	11/16/78	DG	9
2	Revised 7-1-83	DF	10
3	OGIS 12/30/90	DSH	11
4	HBS 2/22/04		12
5			13
6			14
7			15
8			16
			17
			18
			19
			20
			21
			22
			23
			24



TUCKER COUNTY
 STATE OF WEST VIRGINIA
 Office of Assessor

DISTRICT **ST. GEORGE**
SHEET NO: 147
 Date, Aerial Photography: November, 1961 Date, Map: Dec, 1962
 Photo No: Scale: 1" = 400'