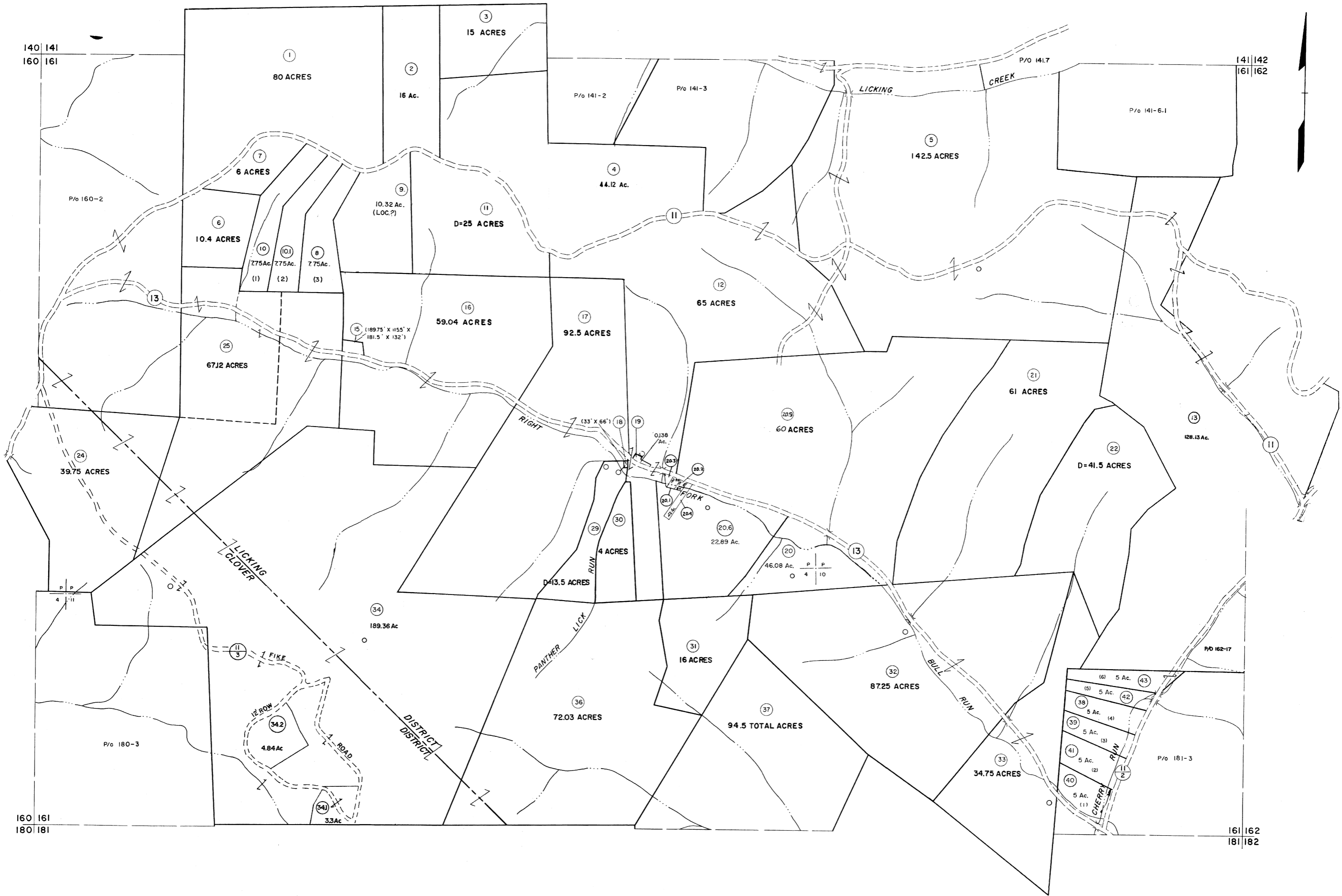


140 141 142
 160 161 162

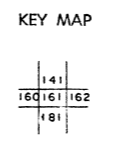


160 161 162
 180 181 182

For Tax Purposes Only
 Prepared by
MICHAEL BAKER, JR., INC.
 Consulting Engineers
 Rochester, Pennsylvania

Legend	
Property line	———
Edge of pavement or roadway	———
Corporation line	———
District line	———
County line	———
Original lot line	-----
Deed lot number	(15)
Parcel or index number	(10)
Improvement	○
Railroad	—+—+—

Revisions	
1	11-16-78 DG 9 O.G.I.S 4-1-96 J.E.B 17 C-21-09 H#5
2	REVISED TO 7-1-83 10 SLS INC. - DDC 5/97 18 5-8-10 H#5
3	7-1-84 L.E.S. 11 SLS INC. 2/19/98 DSW 19
4	REV. TO 3-1-89 NCS 12 SLS INC. 1/27/99 DSW 20
5	OGIS 12/30/90 DSH 13 SLS INC. 3/1/00 JWM 21
6	OGIS 3-19-92 TL 14 ESI 1/30/01 REK 22
7	OGIS 1/24/93 DSH 15 3/21/05 S.B.H 23
8	OGIS 12/9/93 SAJ 16 6-22-08 H#5 24



TUCKER COUNTY
 STATE OF WEST VIRGINIA
 Office of Assessor

DISTRICT **LICKING CLOVER**
SHEET NO: 161
 Date, Aerial Photography: November, 1961 Date, Map: Dec. 1962
 Photo No: Scale: 1" = 400'