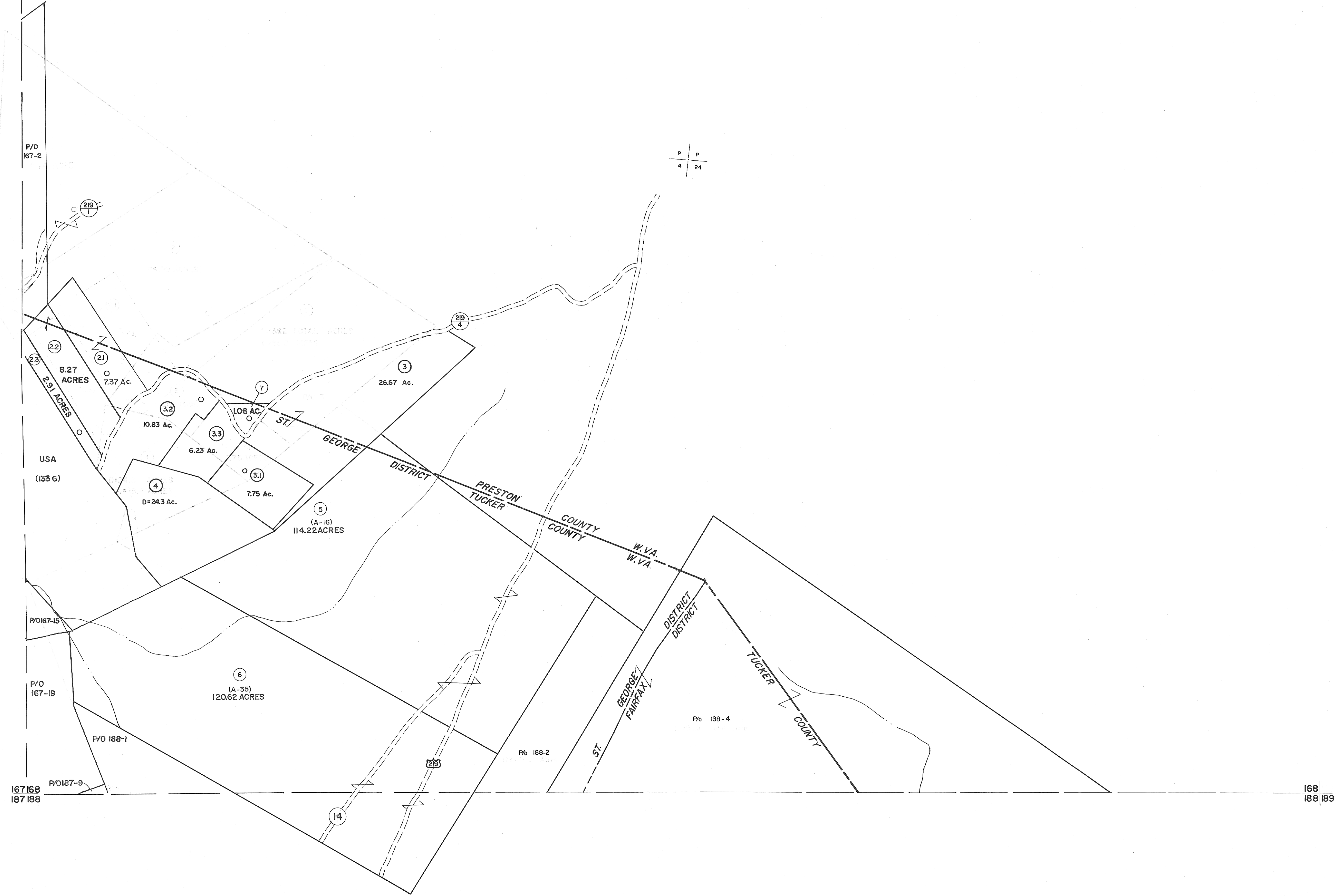


147
167|168

168



For Tax Purposes Only

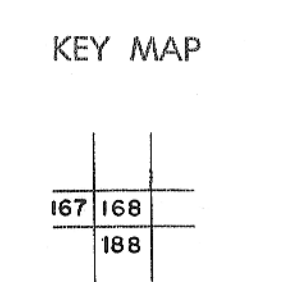
Prepared by
MICHAEL BAKER, JR., INC.
 Consulting Engineers
 Rochester, Pennsylvania

Legend

Property line	—	Original lot line	---
Edge of pavement or roadway	---	Deed lot number	(15)
Corporation line	---	Parcel or index number	(2)
District line	---	Improvement	o
County line	---	Railroad	—+—

Revisions

1	11/17/78	D.G.	9	3/26/07	S&H	17
2	REVISED TO 7-1-83		10	5-8-10	H&S	18
3	REV. TO 7-1-86	NCS	11	5-4-13	H&S	19
4	REV. TO 3-1-89	NCS	12			20
5	OGIS 12/30/90	DSH	13			21
6	OGIS 3-19-92	TL	14			22
7	OGIS 1/24/93	DSH	15			23
8	O.G.I.S 4-1-98	J.E.B	16			24



TUCKER COUNTY
 STATE OF WEST VIRGINIA
 Office of Assessor

DISTRICT **ST. GEORGE FAIRFAX**

SHEET NO: 168

Date, Aerial Photography: November, 1961 Date, Map: Dec. 1962
 Photo No: Scale: 1" = 400'