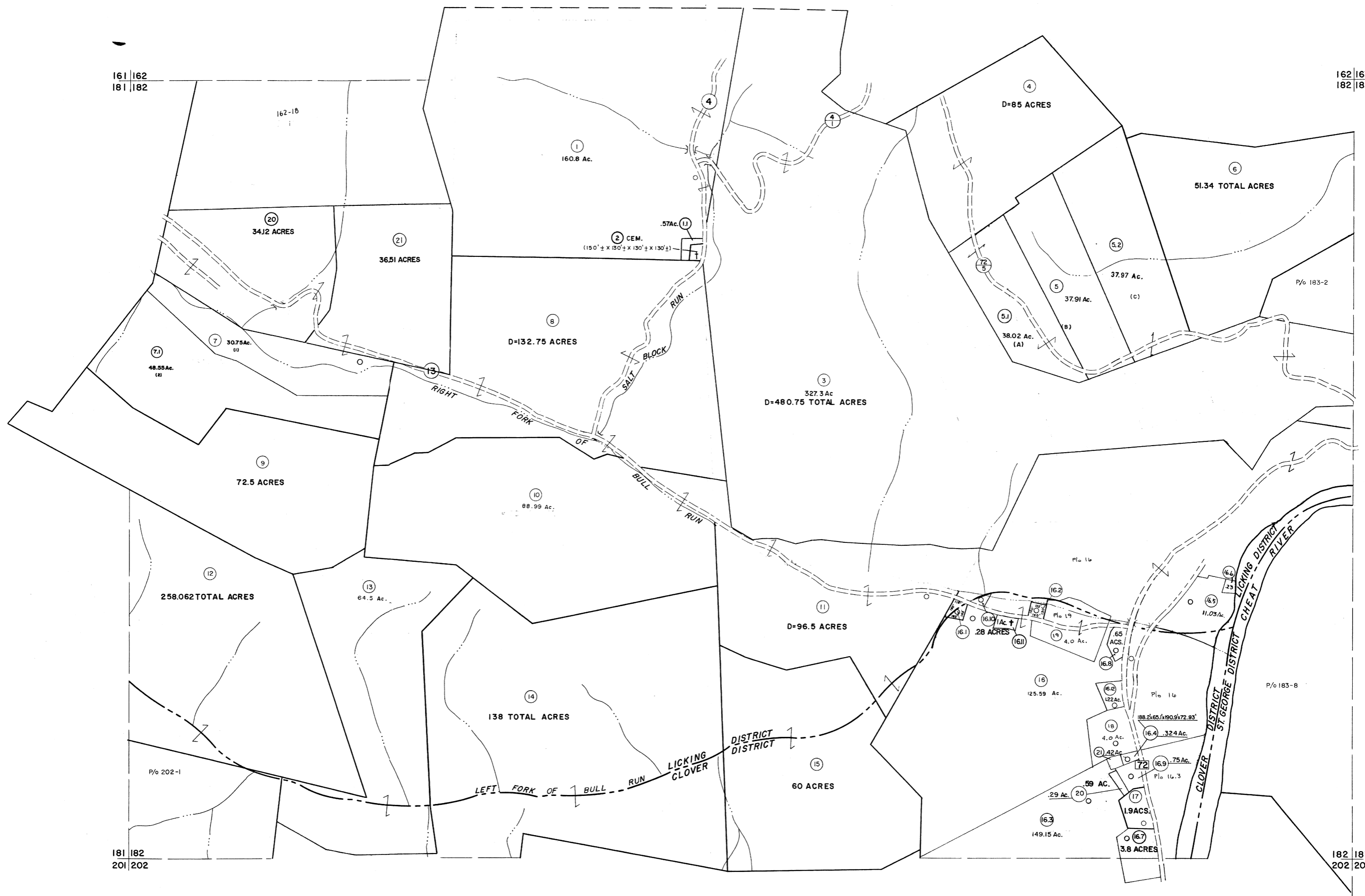


161 | 162
181 | 182

162 | 163
182 | 183



181 | 182
201 | 202

182 | 183
202 | 203

For Tax Purposes Only

Prepared by
MICHAEL BAKER, JR., INC.
Consulting Engineers
Rochester, Pennsylvania

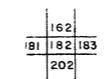
Legend

| | | | |
|-----------------------------|-----|------------------------|------|
| Property line | --- | Original lot line | --- |
| Edge of pavement or roadway | --- | Deed lot number | (15) |
| Corporation line | --- | Parcel or index number | (99) |
| District line | --- | Improvement | o |
| County line | --- | Railroad | --- |

Revisions

| | | | | | | | | | |
|---|-------------------|----------|--------|-------------|---------|--------|----|---------|--------|
| 1 | 6-6-75 | J.C. | 9 | O.G.I.S. | 4-1-96 | J.E.B. | 17 | 3/26/07 | S.B.H. |
| 2 | 11-20-78 | D.G. | 10 | S.L.S. INC. | 3/1/00 | J.W.M. | 18 | 6-22-08 | ++45 |
| 3 | REVISED TO 7-1-83 | | 11 | ES1 | 1/31/01 | REK | 19 | 6-21-09 | ++45 |
| 4 | 7-1-84 | L.E.S. | 12 | ES1 | 2/7/02 | REK | 20 | | |
| 5 | REV. TO 7-1-85 | N.C.S. | 13 | H.B.S. | 2/22/04 | | 21 | | |
| 6 | REV. TO 3-1-89 | N.C.S. | 14 | | 3/21/05 | S.B.H. | 22 | | |
| 7 | O.G.I.S. | 3-19-92 | T.L. | | 3/28/06 | S.B.H. | 23 | | |
| 8 | O.G.I.S. | 12/11/93 | S.A.J. | | | | 24 | | |

KEY MAP



TUCKER COUNTY
STATE OF WEST VIRGINIA
Office of Assessor

DISTRICT **LICKING CLOVER ST. GEORGE**
SHEET NO: 182
Date, Aerial Photography: Nov., 1961
Photo No: _____
Date, Map: Dec., 1962
Scale: 1" = 400'