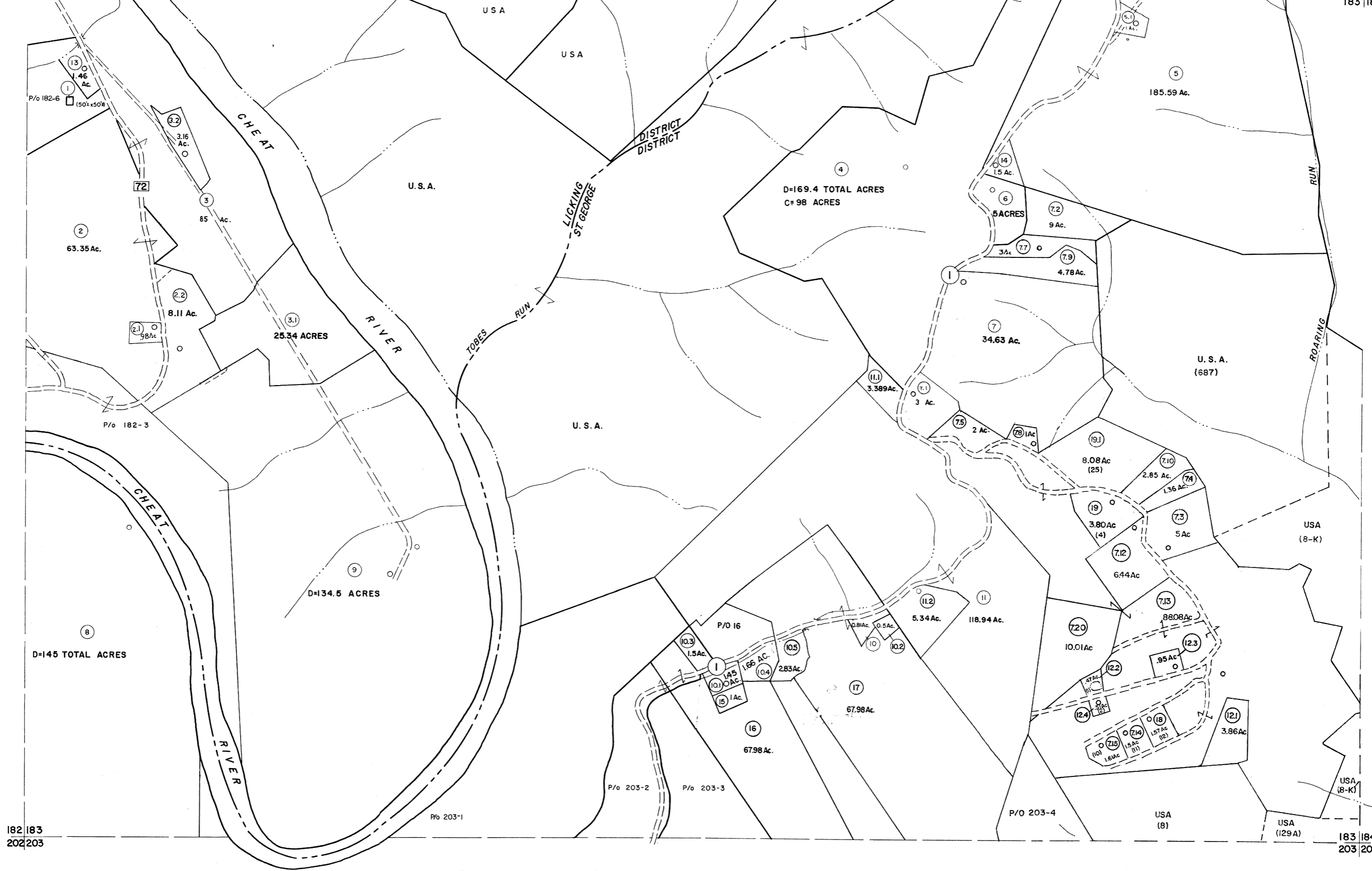


162 | 163
182 | 183

163 | 164
183 | 184



182 | 183
202 | 203

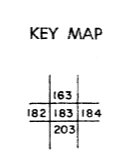
183 | 184
203 | 204

For Tax Purposes Only

Prepared by
MICHAEL BAKER, JR., INC.
Consulting Engineers
Rochester, Pennsylvania

Legend	
Property line	Original lot line
Edge of pavement or roadway	Deed lot number
Corporation line	Parcel or index number
District line	Improvement
County line	Railroad

Revisions			
1	6-6-75	JC	9
2	11/20/78	DG	10
3	7-1-83	C.R.	11
4	7-1-84	L.E.S.	12
5	REV TO 7-1-86	NCS	13
6	Revised to 7-1-87		14
7	REV TO 3-1-89	NCS	15
8	OGIS 12/30/90	DSH	16



TUCKER COUNTY
STATE OF WEST VIRGINIA
Office of Assessor

DISTRICT LICKING ST. GEORGE

SHEET NO: 183

Date, Aerial Photography: Nov., 1961 Date, Map: Dec., 1962
Photo No: Scale: 1" = 400'