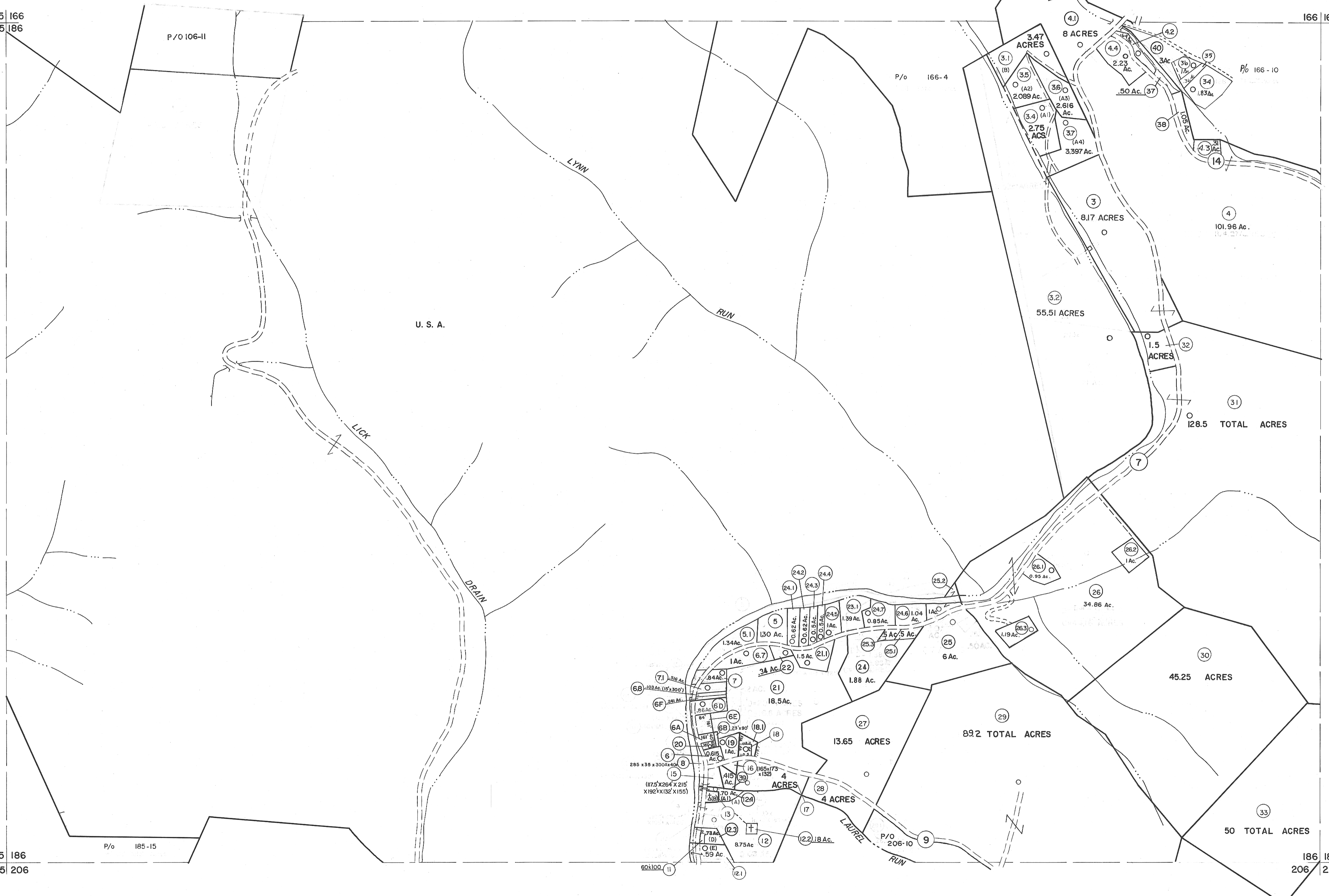


165 166
185 186

166 167

185 186
205 206

186 187
206 207



For Tax Purposes Only

Prepared by
MICHAEL BAKER, JR., INC.
Consulting Engineers
Rochester, Pennsylvania

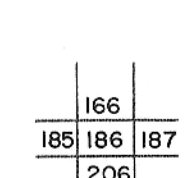
Legend

Property line	—	Original lot line	- - - - -
Edge of pavement or roadway	— · — · —	Dead lot number	(15)
Corporation line	— · — · —	Parcel or index number	(99)
District line	— · — · —	Improvement	○
County line	— · — · —	Railroad	— + — + —

Revisions

1	10-3-63	9	OGIS 12/30/90 DSH	17	SLS INC. 1/27/99 DSW
2	6-3-64	10	OGIS 3-19-92 TL	18	SLS INC. 3/1/00 JWM
3	6-3-78	11	OGIS 1/25/93 DSH	19	ESI 1/31/01 REK
4	11/20/78	12	OGIS 12/11/93 SAJ	20	H&S 2/22/04
5	TO JULY 1, 1983 C.P.	13	OGIS 2-95	21	3/24/07 SBH
6	REV. TO 7-1-85	14	O.G.I.S. 4-1-96	22	5-8-10 H4J
7	REV. TO 7-1-85	15	SLS INC. - DDC 5/97	23	5-4-13 H4J
8	REV. TO 3-1-89	16	SLS INC. 2/19/98 DSW	24	

KEY MAP



TUCKER COUNTY
STATE OF WEST VIRGINIA
Office of Assessor

DISTRICT

ST. GEORGE

SHEET NO: 186

Date, Aerial Photography: November, 1961 Date, Map: Dec. 1962
Photo No: Scale: 1" = 400'