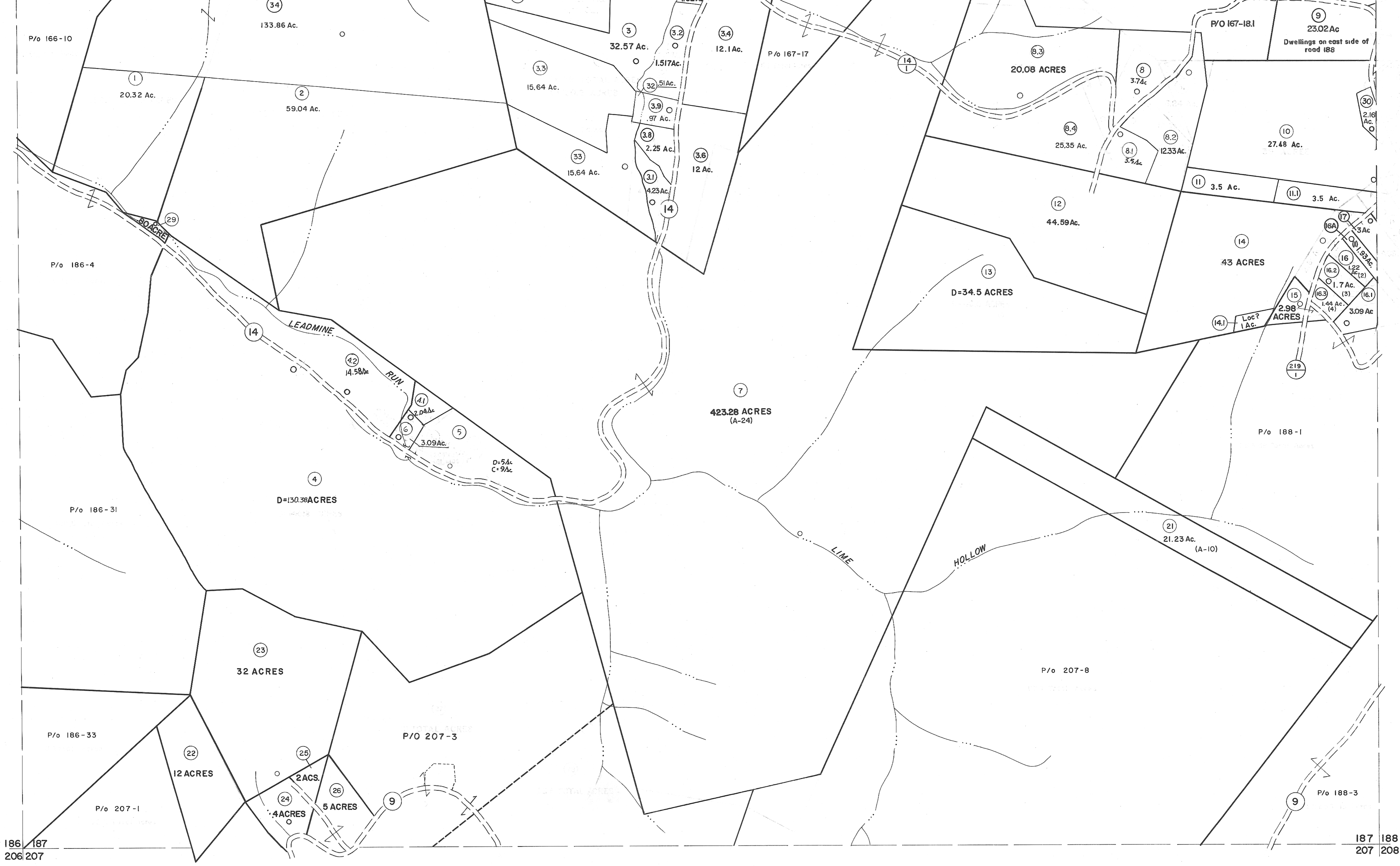


166 167
186 187

167 168
187 188



DETAILS FOR THESE
PARCELS ON MAP 183

10.1
10.2
18
19
20

For Tax Purposes Only
Prepared by
MICHAEL BAKER, JR., INC.
Consulting Engineers
Rochester, Pennsylvania

Legend	
Property line	Original lot line
Edge of pavement or roadway	Deed lot number
Corporation line	Parcel or index number
District line	Improvement
County line	Railroad

Revisions	
1 10-3-63 BH	9 OGIS 12/30/90 DSH
2 11-20-78 DA	10 OGIS 3-19-92 TL
3 To 7-1-83	11 OGIS 12/11/93 SAJ
4 7-1-84 L.F.S.	12 OGIS 2-95 HD
5 Revised to 7-1-85	13 O.G.I.S. 4-1-98 J.E.B.
6 REV TO 7-1-86 NCS	14 SLS INC. - DDC 5/97
7 Revised to 7-1-87	15 SLS INC. 2/19/98 DSW
8 REV TO 3-1-89 NCS	16 SLS INC. 1/27/99 DSW
	17 ESI 1/31/01 REK
	18 ESI 2/17/02 REK
	19 ESI 2/20/03 REK
	20 H&S 2/22/04
	21 3/28/06 S.B.H.
	22 3/24/07 S.B.H.
	23 5-8-10 H&S
	24 6/23/11 S.B.H.

5-4-13 44.5
KEY MAP
167
186 187 188
207

TUCKER COUNTY
STATE OF WEST VIRGINIA
Office of Assessor

DISTRICT
ST. GEORGE
SHEET NO: 187
Date, Aerial Photography: Nov., 1961 Date, Map: Dec., 1962
Photo No: Scale: 1" = 400'