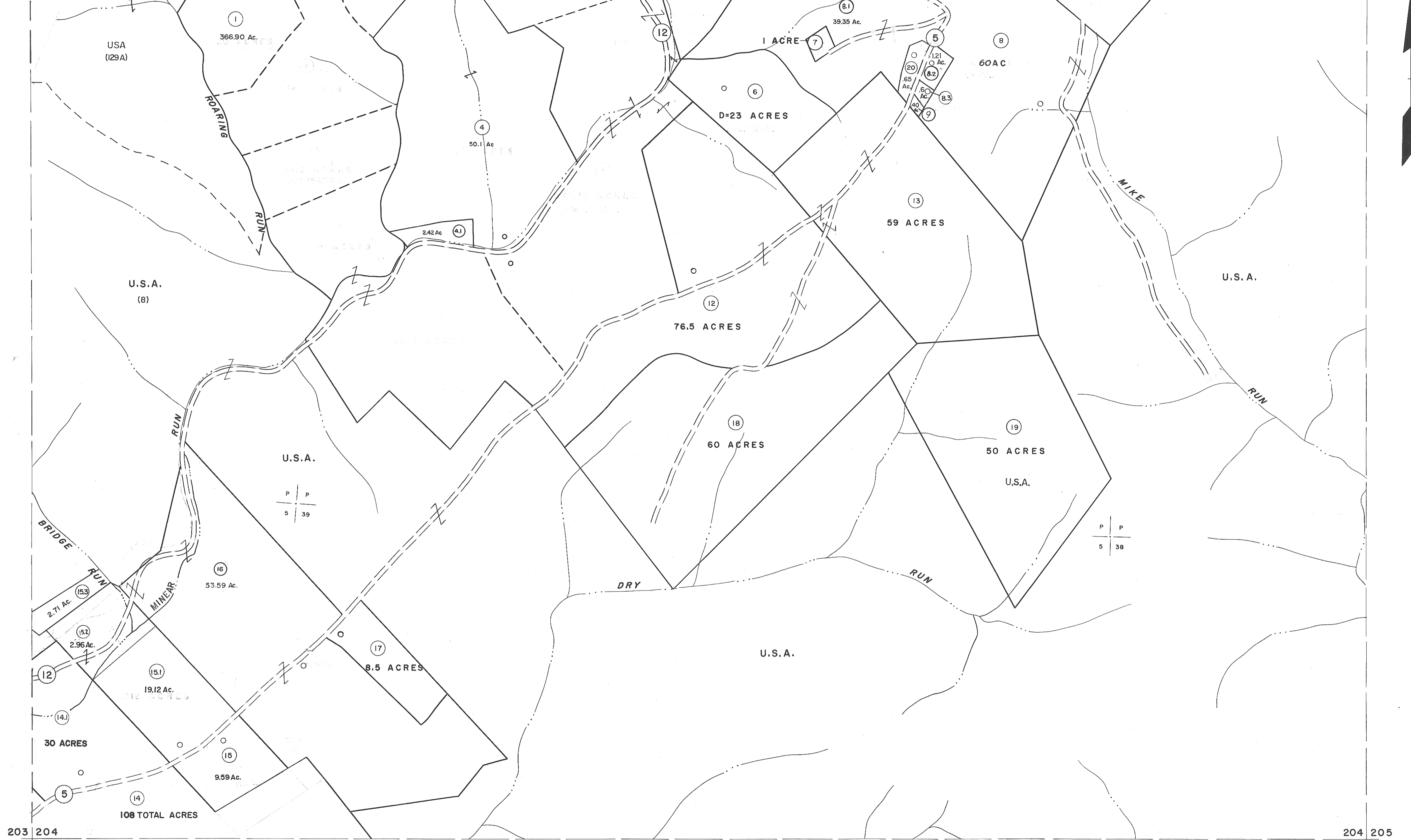


183 | 184  
203 | 204

184 | 185  
204 | 205



203 | 204  
223 | 224

204 | 205  
224 | 225

**For Tax Purposes Only**  
 Prepared by  
**MICHAEL BAKER, JR., INC.**  
 Consulting Engineers  
 Rochester, Pennsylvania

Legend	
Property line	—
Edge of pavement or roadway	- - - -
Corporation line	- · - · -
District line	- - - -
County line	- · - · -
Original lot line	- - - -
Dead lot number	(15)
Parcel or index number	(99)
Improvement	○
Railroad	—+—

Revisions			
1	10-3-63	9	D.G.I.S. 4-1-96 J.E.B.
2	11/20/78 DG	10	SLS INC. - DDC 5/97
3	1/2/82 DG	11	SLS INC. 2/23/98 JWM
4	REV. TO 7-1-86 NCS	12	SLS INC. 3/1/00 JWM
5	OGIS 12/31/90 DSH	13	6-22-08 +4.5
6	OGIS 3-13-92 TL	14	5-8-10 +4.5
7	OGIS 1/25/93 DSH	15	6/23/11 S&H
8	OGIS 2-95 HD	16	5-4-13 +4.5

KEY MAP

**TUCKER COUNTY**  
 STATE OF WEST VIRGINIA  
 Office of Assessor

DISTRICT  
**ST. GEORGE**  
 SHEET NO: **204**  
 Date, Aerial Photography: Nov., 1961 Date, Map: Dec., 1962  
 Photo No: Scale: 1" = 400'