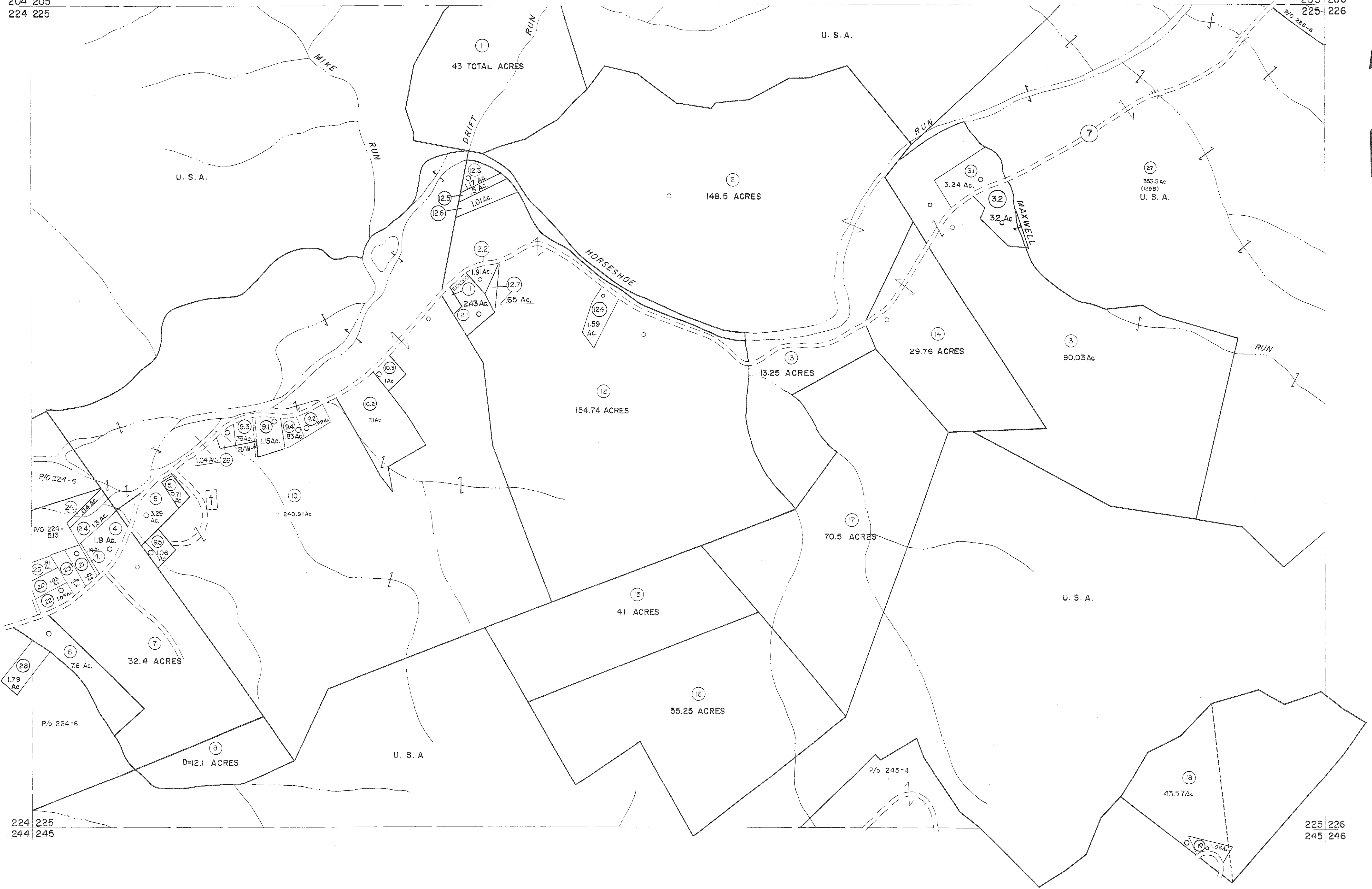


204 205  
224 225

205 206  
225 226



For Tax Purposes Only  
 Prepared by  
**MICHAEL BAKER, JR., INC.**  
 Consulting Engineers  
 Rochester, Pennsylvania

Legend	
Property line	Original lot line
Edge of pavement or roadway	Dead lot number (15)
Corporation line	Parcel or index number (22)
District line	Improvement
County line	Railroad

Revisions					
1	6-3-75	JC	9	OGIS 2-95	HD 17
2	11-21-78	DA	10	SLS INC. - DDC 5/97	18 6/23/11
3	REV. TO 7-1-85	DA	11	SLS INC. 1/27/99	DSW 19 5-4-13
4	REV. TO 7-1-86	NCS	12	ESI 1/31/01	REK 20 5/26/15
5	REV. TO 3-1-89	R.E.B.	13	ESI 2/7/02	REK 21
6	OGIS 3-19-92	TL	14	3/21/05	S&H 22
7	OGIS 1/25/93	DSH	15	3/24/07	S&H 23
8	OGIS 12/11/93	SAJ	16	6-21-09	HH 24

KEY MAP

**TUCKER COUNTY**  
 STATE OF WEST VIRGINIA  
 Office of Assessor

DISTRICT **ST. GEORGE**  
**SHEET NO: 225**  
 Date, Aerial Photography: Nov., 1961 Date, Map: Dec., 1962  
 Photo No: Scale: 1" = 400'