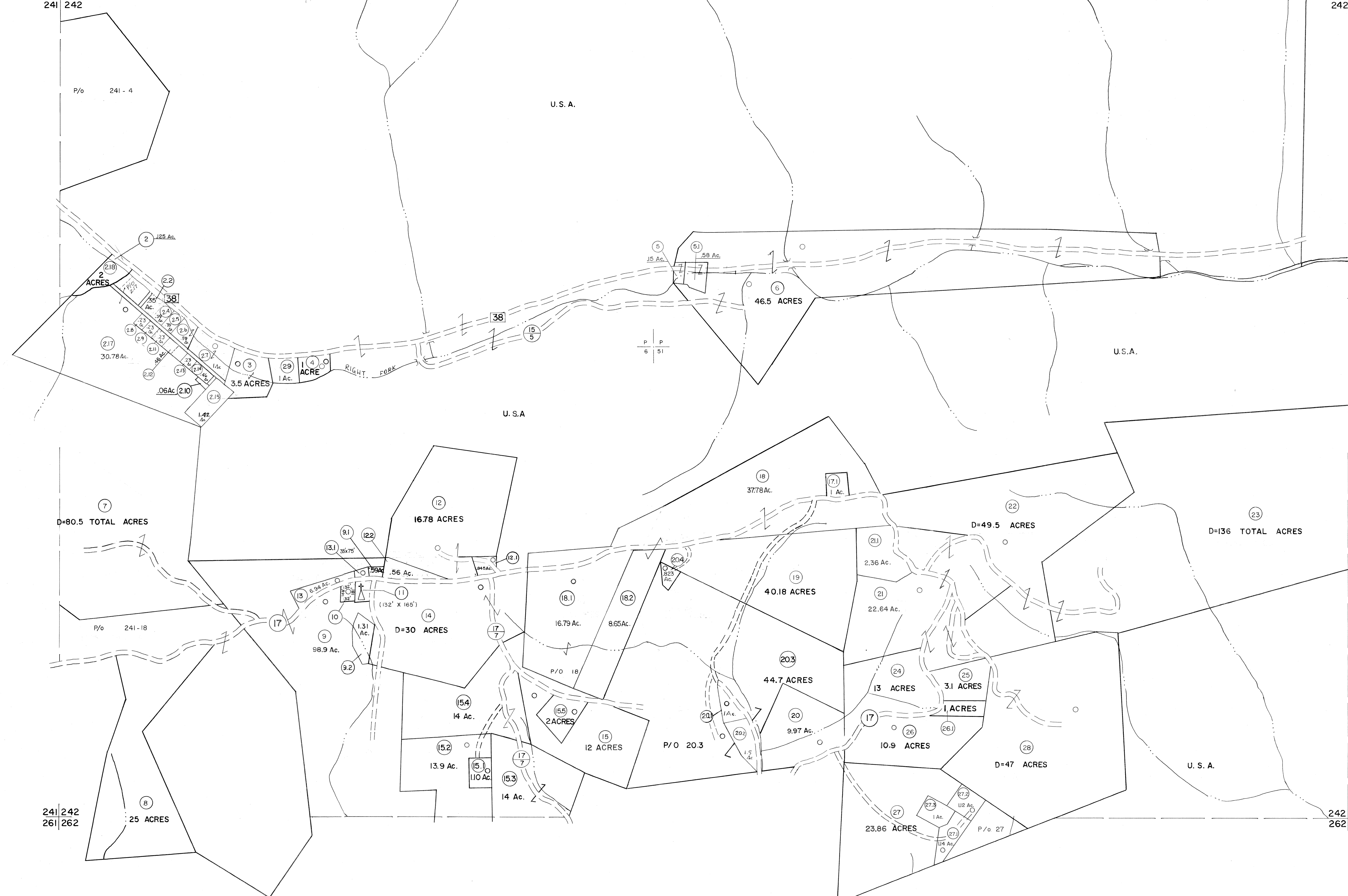


221 222  
241 242

222 223  
242 243



For Tax Purposes Only

Prepared by  
MICHAEL BAKER, JR., INC.  
Consulting Engineers  
Rochester, Pennsylvania

Legend	
Property line	—————
Edge of pavement or roadway	—————
Corporation line	—————
District line	—————
County line	—————
Original lot line	-----
Deed lot number	(15)
Parcel or index number	(20)
Improvement	○
Railroad	—+—+—+—

Revisions	
1	JUNE 25 PAM 9 OGIS 3-19-92 TL 17 ES1 2/8/02 REK
2	11-21-78 DG 10 OGIS 1/25/93 DSH 18 HBS 2/22/04
3	Revised to 7-1-88 11 OGIS 12/11/93 SAJ 19 3/24/07 S8H
4	7-1-84 L.E.S. 12 O.G.I.S. 4-1-96 J.E.B. 20
5	Revised to 7-1-85 13 SLS INC. - DDC 5/97 21
6	REV. TO 7-1-86 NCS 14 SLS INC. - DDC 5/97 21
7	REV. TO 3-1-89 R.E.B. 15 SLS INC. 2/23/98 JWM 22
8	OGIS 12/31/90 DSH 16 ES1 1/31/01 REK 24

KEY MAP

**TUCKER COUNTY**  
STATE OF WEST VIRGINIA  
Office of Assessor

DISTRICT  
**CLOVER**

SHEET NO: 242

Date, Aerial Photography: November, 1961 Date, Map: Dec, 1962  
Photo No: Scale: 1" = 400'