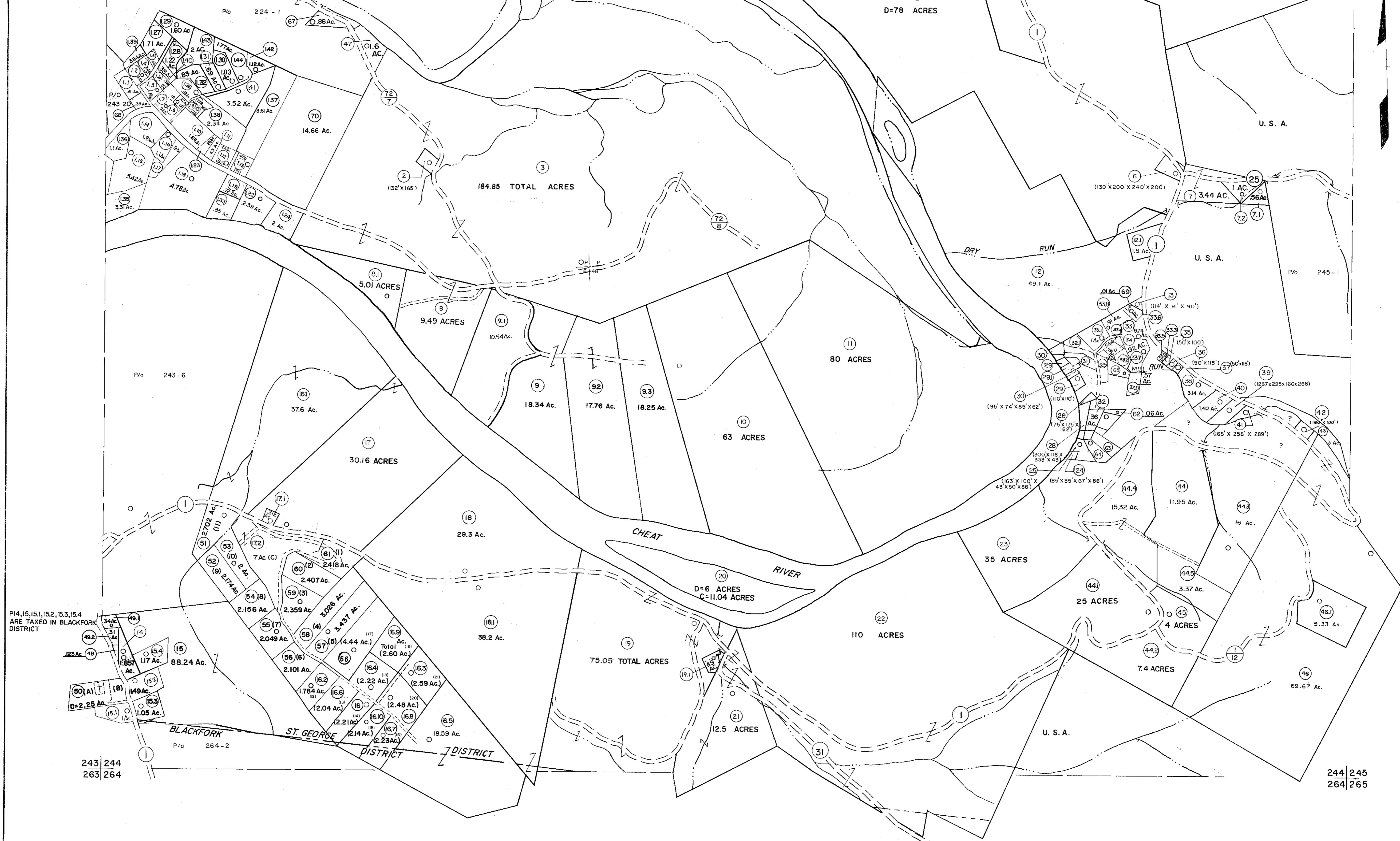


223 224  
243 244

224 225  
244 245



243 244  
263 264

244 245  
264 265

**For Tax Purposes Only**

Prepared by  
MICHAEL BAKER, JR., INC.  
Consulting Engineers  
Rochester, Pennsylvania

Legend	
Property line	Original lot line
Edge of pavement or roadway	Def'd lot number
Corporation line	Parcel or index number
District line	Improvement
County line	Railroad

Revisions	
1	7-0-3-63
2	6-3-64
3	6-3-75
4	11/21/78
5	Revised to 7-1-84
6	7-1-84
7	Revised to 7-1-85
8	REV. TO 7-1-86
9	Revised to 7-1-87
10	REV. TO 3-1-89
11	OGIS 12/31/90
12	OGIS 3-19-92
13	OGIS 1/25/93
14	OGIS 12/11/93
15	OGIS 2-95
16	REV. TO 4-1-96
17	SLS INC. - DDC 5/97
18	SLS INC. 2/23/98
19	SLS INC. 1/27/99
20	SLS INC. 3/1/00
21	ESI 1/31/01
22	ESI 2/8/02
23	ESI 2/20/03
24	H&S 2/19/04

3/21/05	SBH
3/28/06	SBH
KEY MAP	
3/24/07	SBH
6-22-08	H&S
5-25-10	H&S
224	
243 244 245	
264	
6/24/11	SBH
3-4-13	H&S

**TUCKER COUNTY**  
STATE OF WEST VIRGINIA  
Office of Assessor

DISTRICT **ST. GEORGE BLACKFORK**  
SHEET NO: 244  
Date, Aerial Photography: November, 1961 Date, Map: Dec., 1962  
Photo No: Scale: 1" = 400'