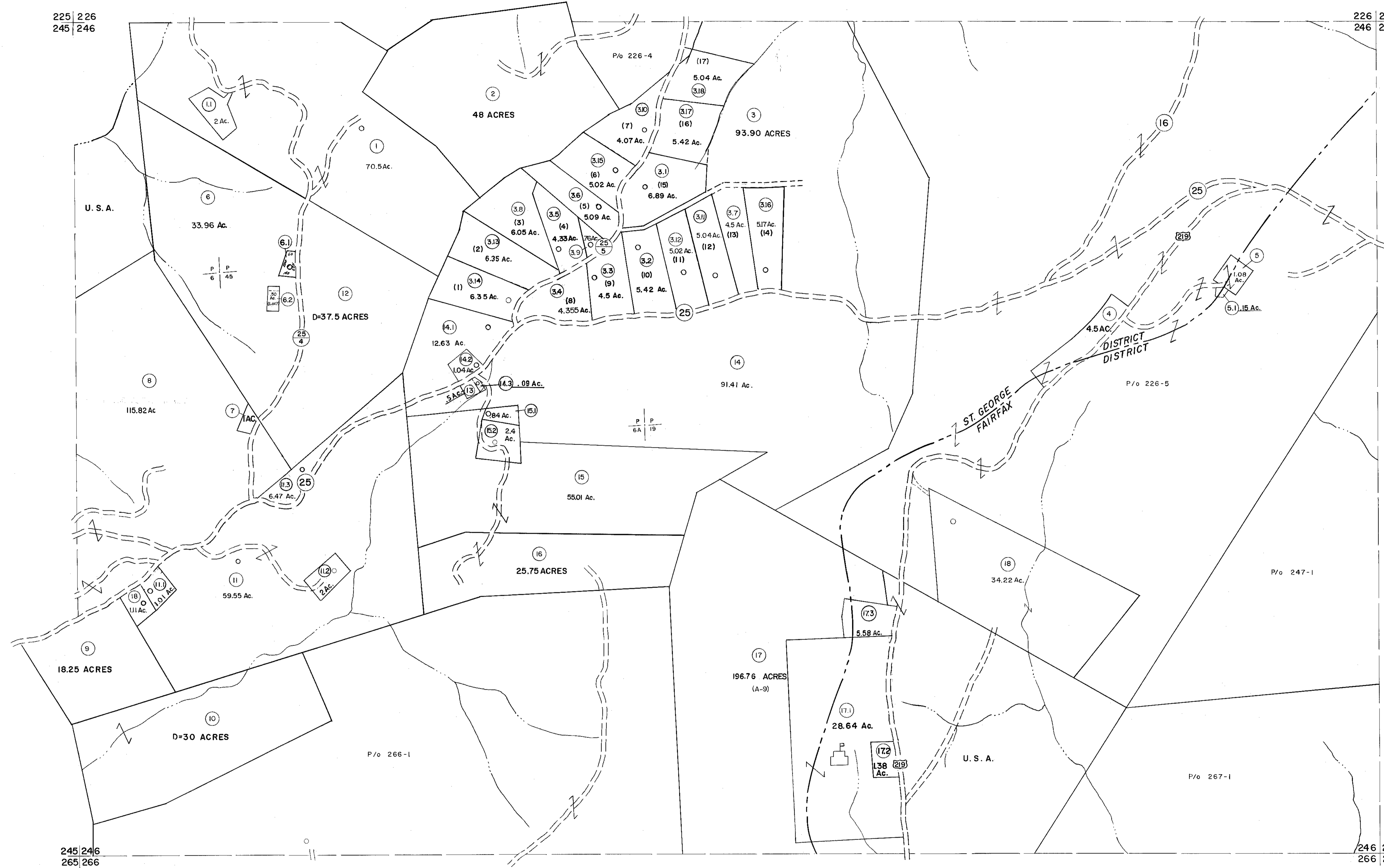


225 | 226
245 | 246

226 | 227
246 | 247



245 | 246
265 | 266

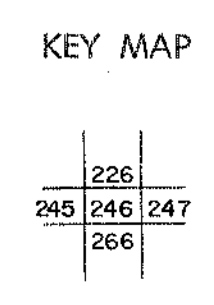
246 | 247
266 | 267

For Tax Purposes Only

Prepared by
MICHAEL BAKER, JR., INC.
Consulting Engineers
Rochester, Pennsylvania

Legend	
Property line	Original lot line
Edge of pavement or roadway	Deed lot number
Corporation line	Parcel or index number
District line	Improvement
County line	Railroad

Revisions	
1	11-21-78 T.G.
2	Revised to 7-1-83
3	7-1-84 L.E.S.
4	July 1985
5	REV. TO 7-1-86 NCS
6	Revised to 7-1-87
7	REV. TO 3-1-89 R.E.B.
8	OGIS 12/31/90 DSH
9	OGIS 3-19-92 TL
10	OGIS 12/11/93 SAJ
11	OGIS 2-95 HD
12	O.G.I.S 4-1-96 J.E.B.
13	SLS INC. - DDC 5/97
14	SLS INC. 2/23/98 JWM
15	ESI 2/8/02 REK
16	
17	ESI 2/20/03 REK
18	HBS 2/19/03
19	3/21/05 SBH
20	3/24/07 SBH
21	4-21-09 H&S
22	5-8-10 H&S
23	5-4-13 H&S
24	



TUCKER COUNTY
STATE OF WEST VIRGINIA
Office of Assessor

DISTRICT ST. GEORGE FAIRFAX

SHEET NO: 246

Date, Aerial Photography: Nov., 1961 Date, Map: Dec., 1962
Photo No: Scale: 1" = 400'