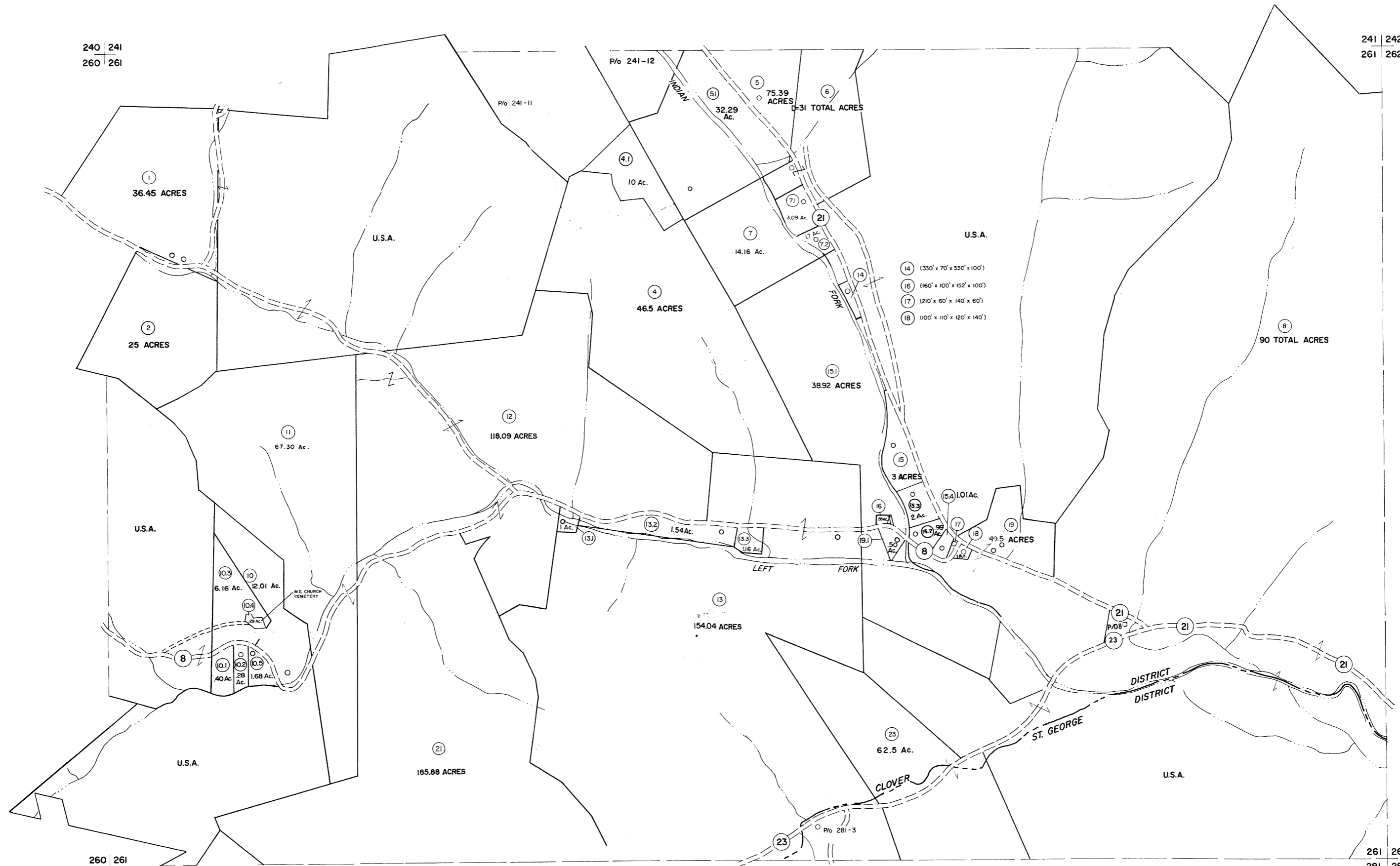


240 | 241
260 | 261

241 | 242
261 | 262



260 | 261
280 | 281

261 | 262
281 | 282

For Tax Purposes Only

Prepared by
MICHAEL BAKER, JR., INC.
Consulting Engineers
Rochester, Pennsylvania

Legend

Property line	—	Original lot line	— (15)
Edge of pavement or roadway	—	Deed lot number	○ (19)
Corporation line	—	Parcel or index number	○ (19)
District line	—	Improvement	○ (19)
County line	—	Railroad	—

Revisions

1	GOLDEN JUN. 75 DAM	9	OGIS 3-19-92 TL	17	SLS INC. 3/2/00 JWM
2	11-27-78 T.G.	10	OGIS 1/26/93 DSH	18	ESI 2/8/02 REK
3	Revised to 7-1-83	11	OGIS 12/12/93 SAJ	19	ESI 2/20/03 REK
4	7-1-84 L.E.S.	12	OGIS 2-95 HD	20	HQS 2/19/04
5	8-1-84	13	O.G.I.S 4-1-96 J.E.B	21	3/21/05 SBH
6	10-1-85	14	SLS INC. - DDC 5/97	22	3/24/07 SBH
7	REV TO 3-1-89	15	SLS INC. 2/23/98 JWM	23	5-8-10 ++S
8	OGIS 1/1/91 DSH	16	SLS INC. 1/27/99 DSW	24	

KEY MAP



TUCKER COUNTY
STATE OF WEST VIRGINIA
Office of Assessor

DISTRICT CLOVER
ST. GEORGE

SHEET NO: 261

Date, Aerial Photography: November, 1961 Date, Map: Dec, 1962
Photo No: Scale: 1" = 400'