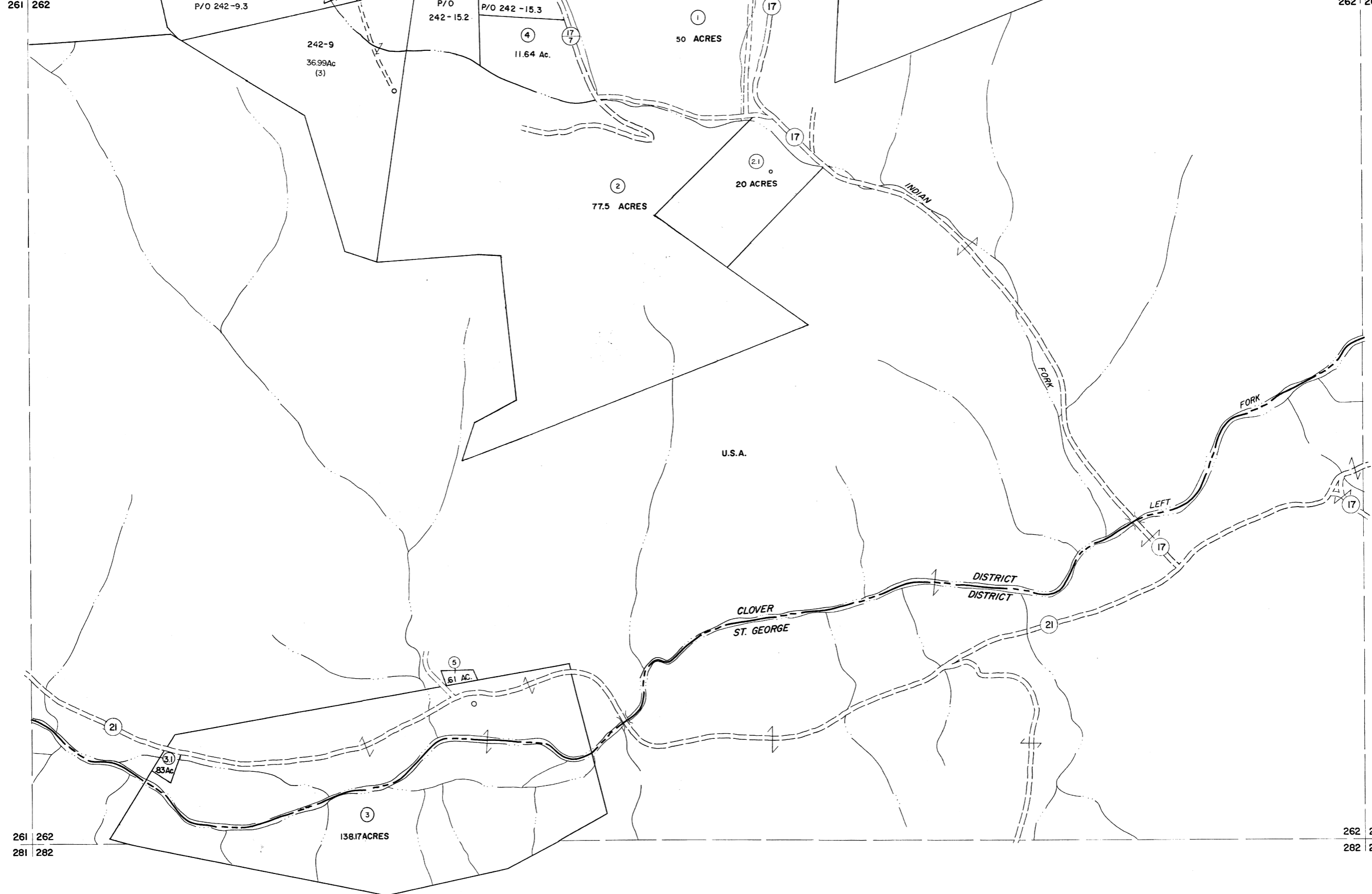


241 242
261 262

242 243
262 263



For Tax Purposes Only

Prepared by
MICHAEL BAKER, JR., INC.
Consulting Engineers
Rochester, Pennsylvania

Legend

| | | | |
|-----------------------------|---|------------------------|-----------|
| Property line | — | Original lot line | - - - - - |
| Edge of pavement or roadway | — | Dead lot number | (15) |
| Corporation line | — | Parcel or index number | (99) |
| District line | — | Improvement | o |
| County line | — | Railroad | —+—+— |

Revisions

| | | | |
|---|-------------------|----|----|
| 1 | Revised to 7-1-88 | 9 | 17 |
| 2 | Revised to 7-1-87 | 10 | 18 |
| 3 | OGIS 1/1/91 DSH | 11 | 19 |
| 4 | OGIS 3-19-92 TL | 12 | 20 |
| 5 | OGIS 2-95 HD | 13 | 21 |
| 6 | 3/28/06 SBH | 14 | 22 |
| 7 | 5-8-10 HHS | 15 | 23 |
| 8 | | 16 | 24 |

KEY MAP



TUCKER COUNTY
STATE OF WEST VIRGINIA
Office of Assessor

DISTRICT CLOVER
ST. GEORGE

SHEET NO: 262

Date, Aerial Photography: November, 1961 Date, Map: Dec. 1962
Photo No: Scale: 1" = 400'