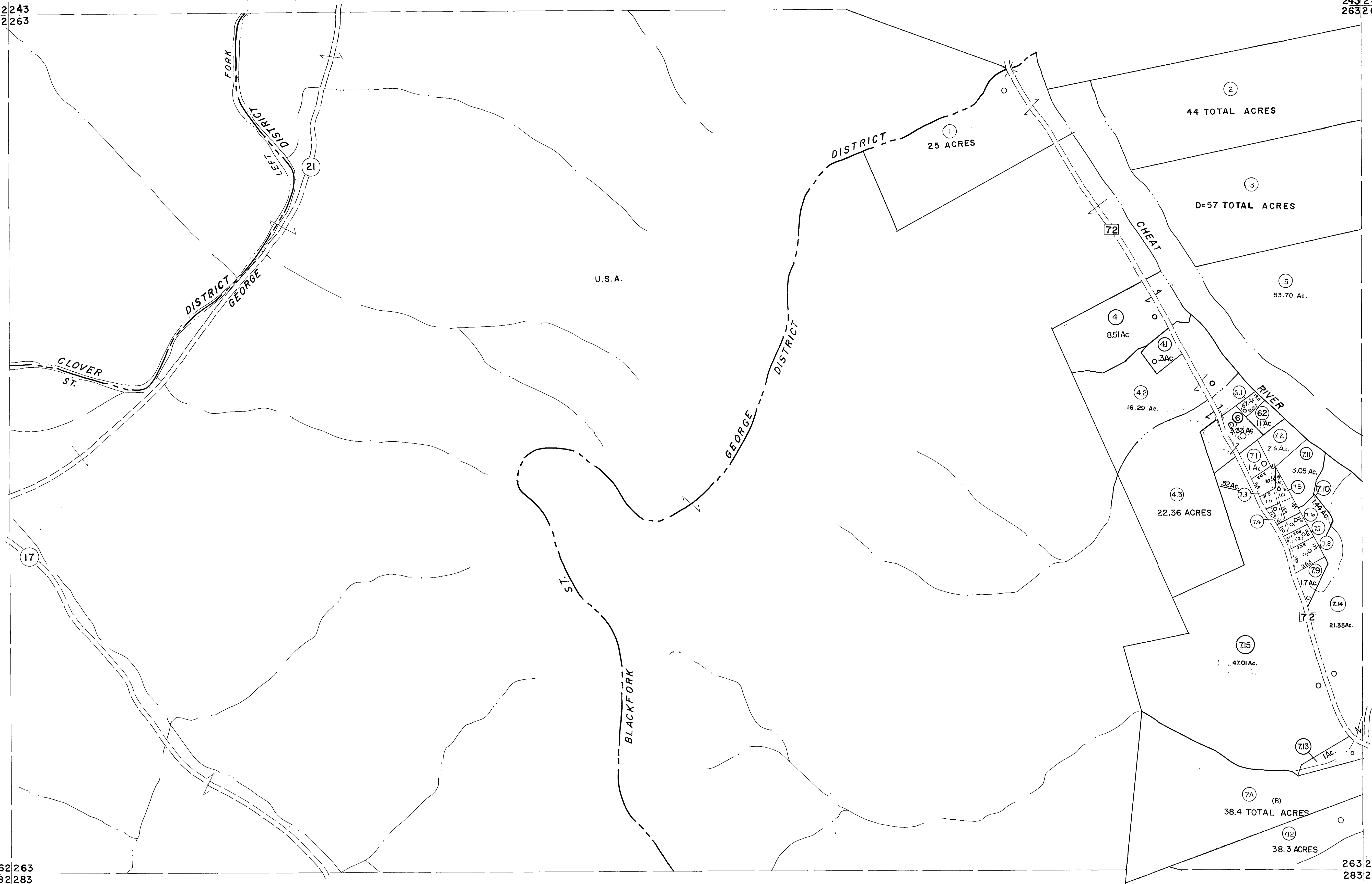


242 243  
262 263

243 244  
263 264

262 263  
282 283

263 264  
283 284



For Tax Purposes Only

Prepared by  
MICHAEL BAKER, JR., INC.  
Consulting Engineers  
Rochester, Pennsylvania

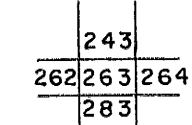
Legend

Property line	—	Original lot line	- - - - -
Edge of pavement or roadway	—	Deed lot number	(15)
Corporation line	—	Parcel or index number	(20)
District line	- - - - -	Improvement	o
County line	- - - - -	Railroad	+

Revisions

1	6-3-68	9	OGIS	3-19-92	TL	17	6/24/11	SBH
2	6-4-75	10	OGIS	4-1-96	J.E.B.	18		
3	11-27-78	11	ESI	1/31/01	REK	19		
4	Revised to 7-1-88	12	HBS	2/19/04		20		
5	Revised to 7-1-88	13		3/28/06	SBH	21		
6	Revised to 7-1-88	14		6-22-08	++ 4.5	22		
7	REV TO 3-1-89	15	R.E.B.	5-8-10	++ 4.5	23		
8	OGIS	16	DSH			24		

KEY MAP



TUCKER COUNTY  
STATE OF WEST VIRGINIA  
Office of Assessor

DISTRICT ST. GEORGE GLOVER  
BLACKFORK

SHEET NO: 263

Date, Aerial Photography: November, 1961 (Date, Map: Dec, 1962)  
Photo No: Scale: 1" = 400'