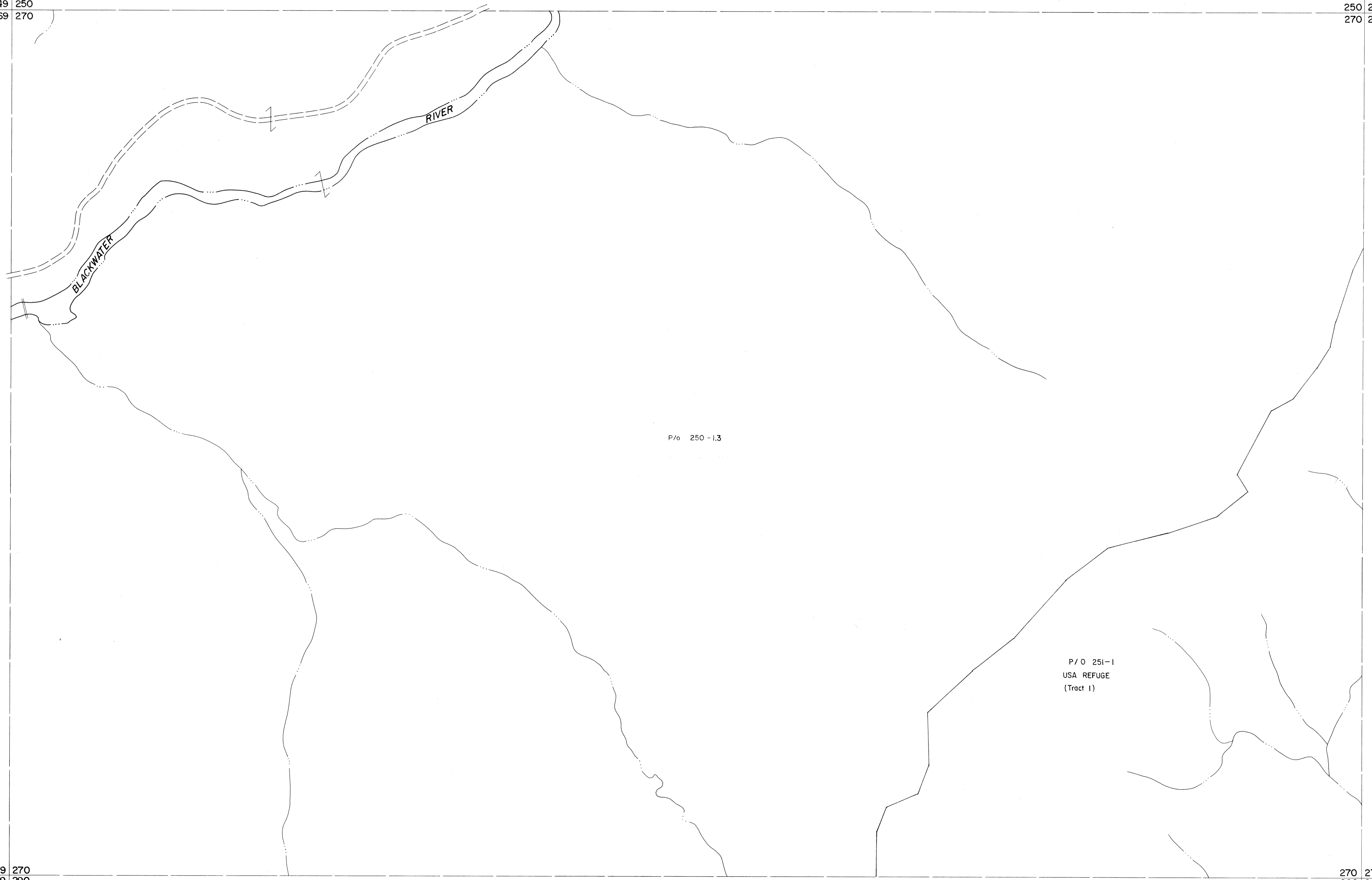


249 250  
269 270

250 251  
270 271

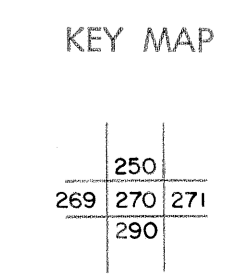


**For Tax Purposes Only**

Prepared by  
MICHAEL BAKER, JR., INC.  
Consulting Engineers  
Rochester, Pennsylvania

Legend	
Property line	—————
Edge of pavement or roadway	——— ———
Corporation line	-----
District line	- - - - -
County line	-----
Original lot line	-----
Deed lot number	(15)
Parcel or index number	(9)
Improvement	○
Railroad	—+—+—+—

Revisions			
1	Revised to 7-1-89	9	17
2	REV. TO 3-1-89	10	18
3	H&S 2/19/04	11	19
4		12	20
5		13	21
6		14	22
7		15	23
8		16	24



**TUCKER COUNTY**  
STATE OF WEST VIRGINIA  
Office of Assessor

DISTRICT	DAVIS
SHEET NO: 270	
Date, Aerial Photography: November, 1961	Date, Map: Dec., 1962
Photo No:	Scale: 1" = 400'