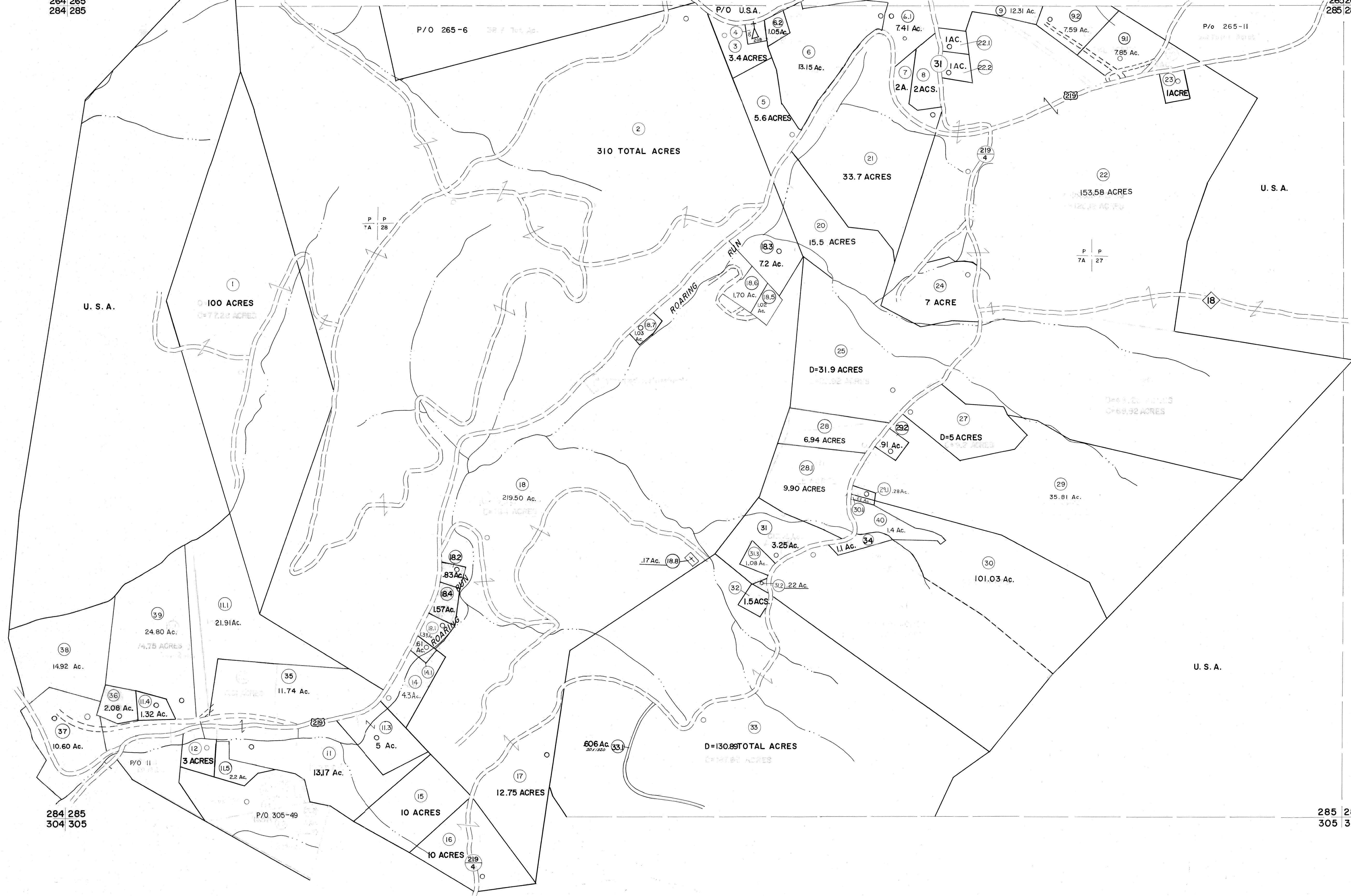


264 265
284 285

265 266
285 286



284 285
304 305

285 286
305 306

For Tax Purposes Only

Prepared by
MICHAEL BAKER, JR., INC.
Consulting Engineers
Rochester, Pennsylvania

Legend

Property line	—	Original lot line	---
Edge of pavement or roadway	---	Dead lot number	(15)
Corporation line	---	Parcel or index number	(22)
District line	---	Improvement	o
County line	---	Railroad	—+—

Revisions

1	10-3-63	9	OGIS	3-19-92	TL	17	ESI	2/8/02	REK
2	6-4-75	10	OGIS	12/12/93	SAJ	18	ESI	2/20/03	REK
3	11-29-78	11	O.G.I.S.	4-1-96	J.E.B.	19	HBS	2/19/04	
4	Revised to 7-1-85	12	SLS INC.	- DDC	5/97	20	3/21/05	S & H	
5	7-1-84	13	SLS INC.	2/27/98	JWM	21	3/24/07	S & H	
6	1/1-85	14	SLS INC.	1/27/99	DSW	22			
7	Revised to 3-1-89	15	SLS INC.	3/2/00	JWM	23			
8	OGIS	1/1/91	DSH	16	ESI	2/1/01	REK	24	

KEY MAP

TUCKER COUNTY
STATE OF WEST VIRGINIA
Office of Assessor

DISTRICT **BLACKFORK**

SHEET NO: 285

Date, Aerial Photography: November, 1961 Date, Map: Dec, 1962
Photo No: Scale: 1" = 400'