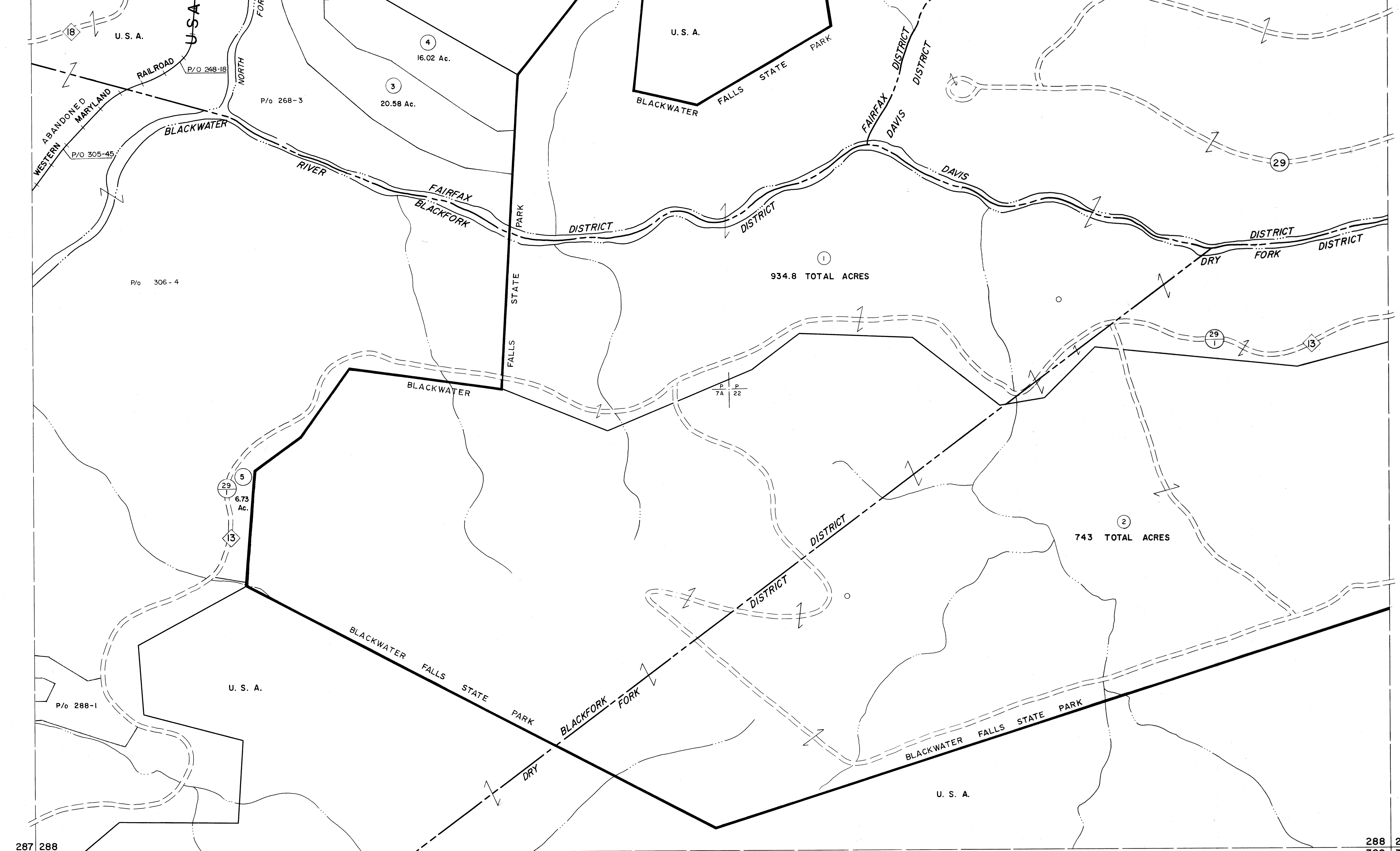


267 268  
287 288

268 269  
288 289



287 288  
307 308

288 289  
308 309

For Tax Purposes Only  
 Prepared by  
**MICHAEL BAKER, JR., INC.**  
 Consulting Engineers  
 Rochester, Pennsylvania

| Legend                      |      |
|-----------------------------|------|
| Property line               | —    |
| Edge of pavement or roadway | —    |
| Corporation line            | —    |
| District line               | —    |
| County line                 | —    |
| Original lot line           | —    |
| Dead lot number             | (15) |
| Parcel or index number      | (39) |
| Improvement                 | o    |
| Railroad                    | —    |

| Revisions |                    |
|-----------|--------------------|
| 1         | Revised to 7-18-83 |
| 2         | OGIS 1/1/91 DSH    |
| 3         | OGIS 1/28/93 DSH   |
| 4         | ESI 2/20/03 REK    |
| 5         |                    |
| 6         |                    |
| 7         |                    |
| 8         |                    |

KEY MAP

**TUCKER COUNTY**  
 STATE OF WEST VIRGINIA  
 Office of Assessor

DISTRICT  
**BLACKFORK FAIRFAX** **DAVIS DRY FORK**  
 SHEET NO: 288  
 Date, Aerial Photography: November, 1961 Date, Map: Dec., 1962  
 Photo No: Scale: 1" = 400'