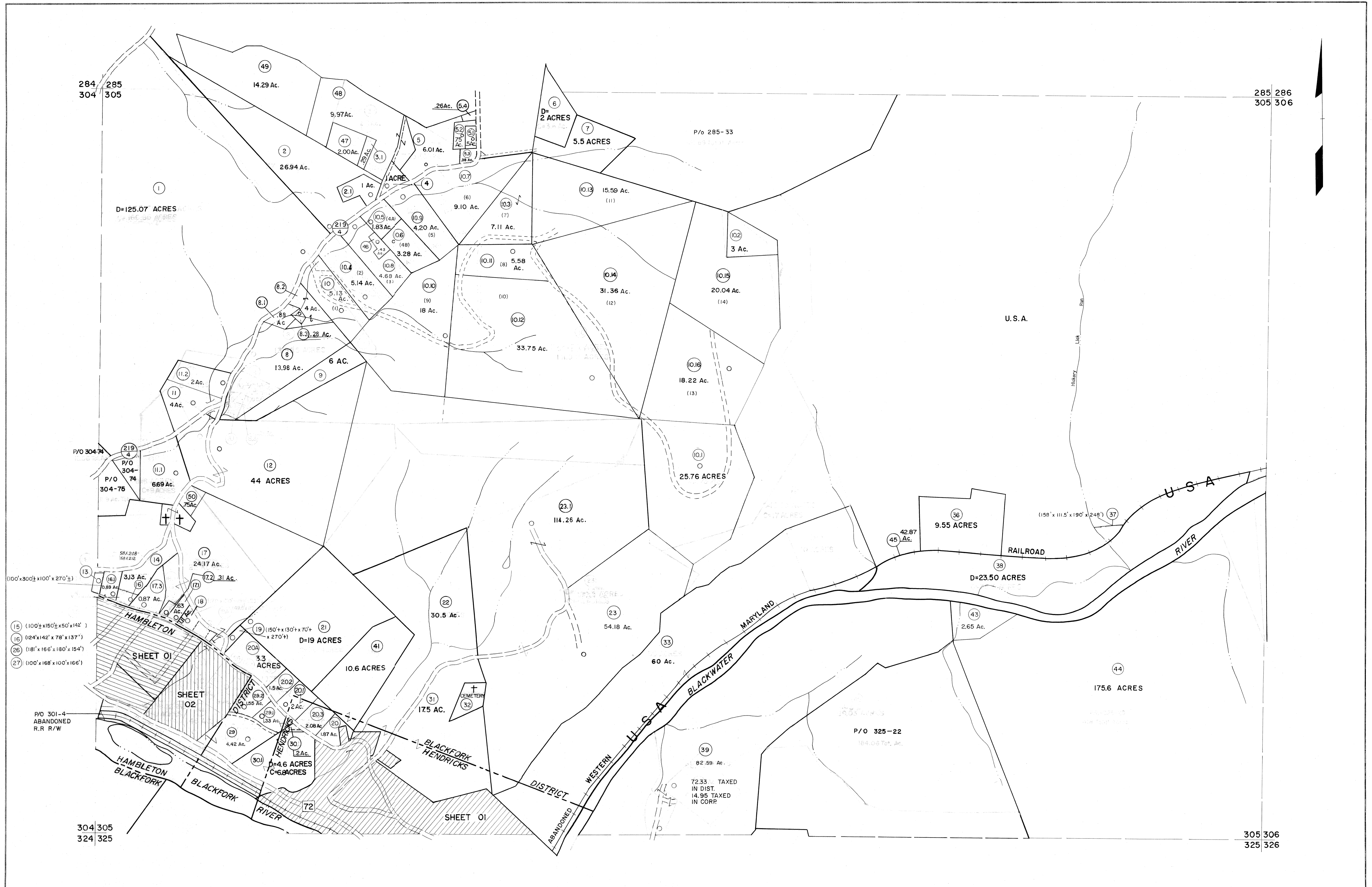


284 285  
304 305

285 286  
305 306



- (15) (100' x 150' x 50' x 142')
- (16) (124' x 142' x 78' x 137')
- (26) (181' x 165' x 180' x 154')
- (27) (100' x 168' x 100' x 166')

304 305  
324 325

305 306  
325 326

For Tax Purposes Only

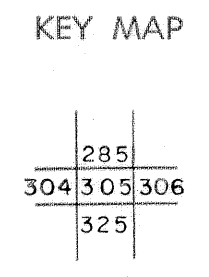
Prepared by  
**MICHAEL BAKER, JR., INC.**  
Consulting Engineers  
Rochester, Pennsylvania

**Legend**

Property line	—	Original lot line	- - - - -
Edge of pavement or roadway	—	Deed lot number	(15)
Corporation line	—	Parcel or index number	(22)
District line	—	Improvement	○
County line	—	Railroad	—+—

**Revisions**

1	10-3-63	9	OGIS	1/4/91	DSH	17	SLS INC.	1/28/99	DSW	
2	6-3-75	10	OGIS	3-19-92	TL	18	SLS INC.	3/2/00	JWM	
3	11-26-78	BAH	11	OGIS	1/30/93	DSH	19	ESI	2/1/01	REK
4	Revised to 7-1-83	12	OGIS	12/11/93	SAJ	20	ESI	2/20/02	REK	
5	Revised to 7-1-85	13	OGIS	2-95	HD	21	HAS	2/19/04		
6	July, 1986	TRL	14	O.G.I.S.	4-1-96	J.E.B.	22	3/21/05	S&H	
7	Revised to 7-1-87	15	SLS INC.	- DDC	5/97		23	3/24/07	S&H	
8	Revised to 3-1-89	R.L.B.	16	SLS INC.	3/3/98	JWM	24			



**TUCKER COUNTY**  
STATE OF WEST VIRGINIA  
Office of Assessor

DISTRICT **BLACKFORK**

SHEET NO: 305

Date, Aerial Photography: November, 1961 Date, Map: Dec, 1962  
Photo No: Scale: 1" = 400'