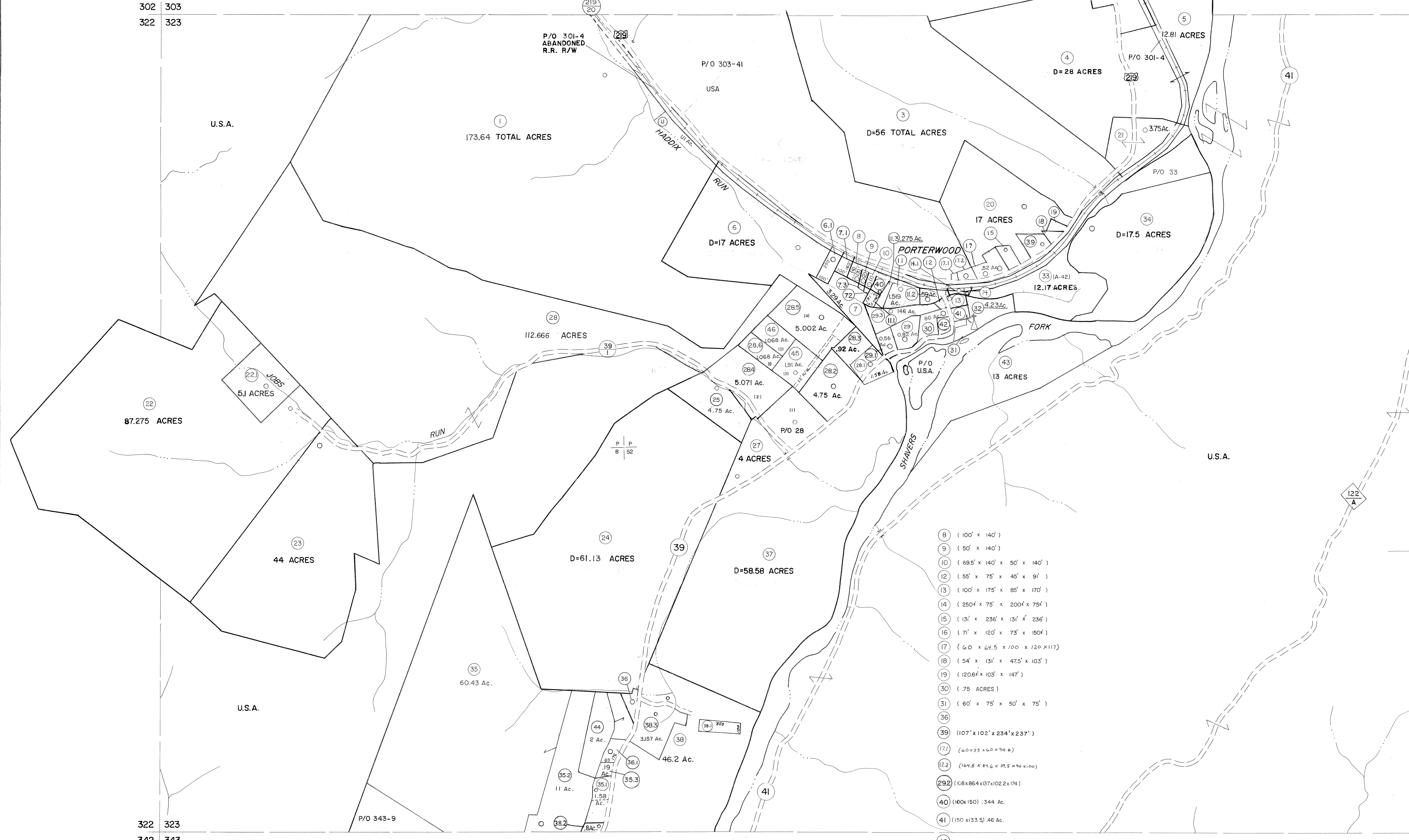


302 303
322 323

303 304
323 324



- 8 (100' x 140')
- 9 (50' x 140')
- 10 (69.5' x 140' x 50' x 140')
- 12 (55' x 75' x 45' x 91')
- 13 (100' x 175' x 85' x 170')
- 14 (250' x 75' x 200' x 75')
- 15 (131' x 236' x 131' x 236')
- 16 (71' x 120' x 73' x 150')
- 17 (60' x 64.5' x 100' x 120' x 117')
- 18 (54' x 131' x 47.5' x 103')
- 19 (1206' x 103' x 147')
- 30 (.75 ACRES)
- 31 (60' x 75' x 50' x 75')
- 36
- 39 (107' x 102' x 234' x 237')
- 171 (60 x 33 x 60 x 74.6)
- 172 (141.5' x 81.6' x 37.5' x 70 x 100)
- 292 (108 x 86.4 x 137 x 102.2 x 174)
- 40 (100 x 150) .344 Ac.
- 41 (150 x 133.5) .46 Ac.
- 42 (132 x 82.5) .25 Ac.
- 72 .03 Ac.
- 73 .02 Ac.

322 323
342 343

323 324
343 344

For Tax Purposes Only

Prepared by
MICHAEL BAKER, JR., INC.
Consulting Engineers
Rochester, Pennsylvania

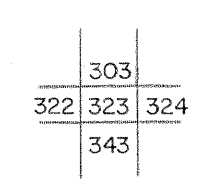
Legend

| | | | |
|-----------------------------|---|------------------------|-----------|
| Property line | — | Original lot line | - - - - - |
| Edge of pavement or roadway | — | Deed lot number | (15) |
| Corporation line | — | Parcel or index number | (4) |
| District line | — | Improvement | ○ |
| County line | — | Railroad | — |

Revisions

| | | | | | | | | |
|---|-------------------|----|-----------------|---------|-----|----------|---------|--------|
| 1 | 10-3-63 | 9 | REV. TO 3-1-89 | R.E.B. | 17 | SLS INC. | 3/2/00 | JWM |
| 2 | 4-4-75 | 10 | OGIS 1/5/91 | DSH | 18 | ESI | 2/1/01 | REK |
| 3 | 11-27-78 | 11 | OGIS 3-19-92 | TL | 19 | ESI | 2/20/03 | REK |
| 4 | Revised to 7-1-85 | 12 | OGIS 1/30/93 | DSH | 20 | HAS | 2/19/04 | |
| 5 | 7-1-84 | 13 | O.G.I.S. 4-1-96 | J.E.B. | 21 | | 3/21/05 | S.B.H. |
| 6 | July 1985 | 14 | SLS INC. - DDC | 5/97 | 22 | | | |
| 7 | July 1986 | 15 | SLS INC. | 3/3/98 | JWM | 23 | | |
| 8 | Revised to 7-1-87 | 16 | SLS INC. | 1/28/99 | DSW | 24 | | |

KEY MAP



TUCKER COUNTY

STATE OF WEST VIRGINIA

Office of Assessor

DISTRICT

BLACKFORK

SHEET NO: 323

Date, Aerial Photography: November, 1961 Date, Map: Dec, 1962
Photo No: Scale: 1" = 400'