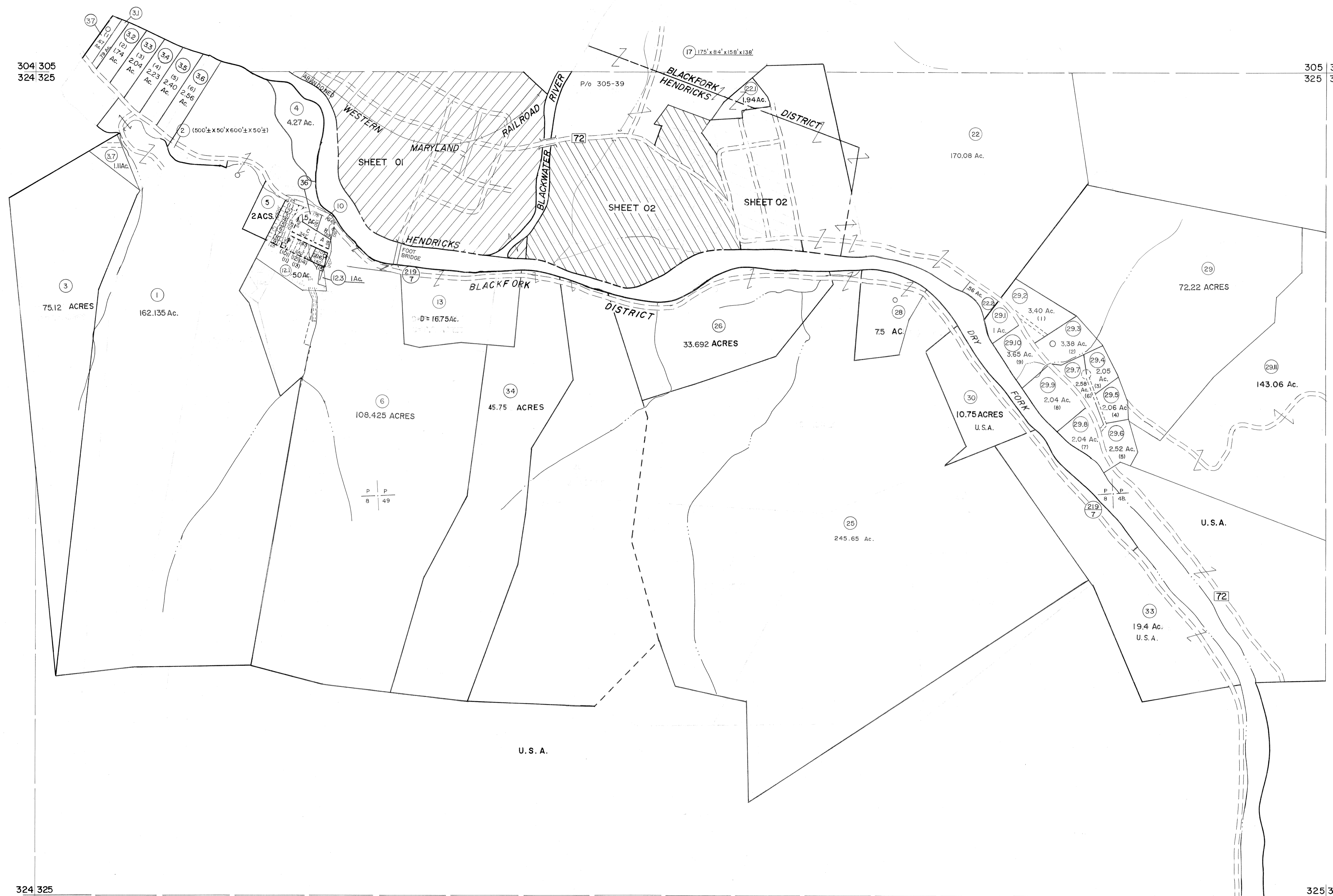


304 305
324 325

305 306
325 326

324 325
344 345

325 326
345 346



For Tax Purposes Only
 Prepared by
MICHAEL BAKER, JR., INC.
 Consulting Engineers
 Rochester, Pennsylvania

Legend	
Property line	Original lot line
Edge of pavement or roadway	Deed lot number
Corporation line	Parcel or index number
District line	Improvement
County line	Railroad

Revisions			
1	6-4-75	T.G.	9
2	11-78	BAH	10
3	Revised to 7-1-83		11
4	Revised to 7-1-87		12
5	July, 1986	TRL	13
6	Revised to 7-1-87		14
7	REV. TO 3-1-89	R.E.B.	15
8	OGIS 1/5/91	DSH	16
9	OGIS 3-19-92	TL	17
10	OGIS 1/30/93	DSH	18
11	OGIS 12/12/93	SAJ	19
12	OGIS 2-95	HD	20
13	O.G.I.S 4-1-96	J.E.B	21
14	SLS INC. - DDC	5/97	22
15	SLS INC. 3/3/98	JWM	23
16	SLS INC. 1/28/99	DSW	24

KEY MAP

TUCKER COUNTY
 STATE OF WEST VIRGINIA
 Office of Assessor

DISTRICT
BLACKFORK (HENDRICKS)

SHEET NO: 325

Date, Aerial Photography: November 1961 Date, Map: Dec. 1962
 Photo No: Scale: 1" = 400'