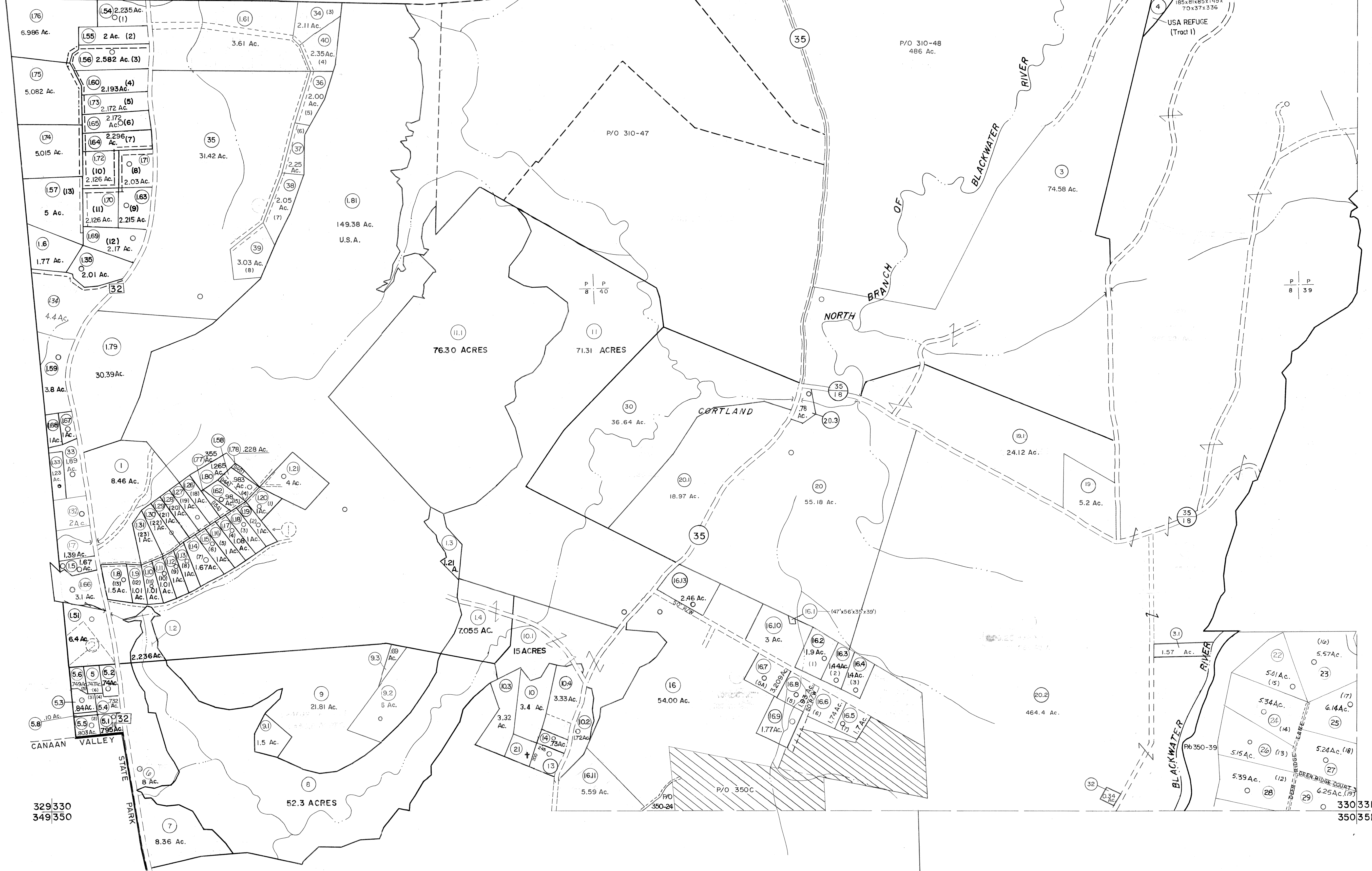


309310  
329330

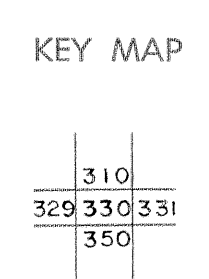
310311  
330331



For Tax Purposes Only  
 Prepared by  
**MICHAEL BAKER, JR., INC.**  
 Consulting Engineers  
 Rochester, Pennsylvania

Legend	
Property line	—
Edge of pavement or roadway	—
Corporation line	—
District line	—
County line	—
Original lot line	- - - - -
Deed lot number	(15)
Parcel or index number	(99)
Improvement	○
Railroad	—+—+—+—

Revisions			
1	6-3-64	REV. TO 3-1-89	R.E.B.
2	6-5-75	TIG.	
3	11-78	BAH	
4	Revised to 7-1-85		
5	7-1-84	L.E.S.	
6	Revised to 7-1-85		
7	July 1986	TRL	
8	Revised to 7-1-85		
9	REV. TO 3-1-89	R.E.B.	
10	OGIS 1/5/91	DSH	
11	OGIS 3-19-92	TL	
12	OGIS 1/30/93	DSH	
13	OGIS 12/12/93	SAJ	
14	OGIS 2-95	HD	
15	O.G.I.S. 4-1-96	J.E.B.	
16	SLS INC. 3/3/98	JWM	
17	SLS INC. 1/28/99	DSW	
18	SLS INC. 3/2/00	JWM	
19	ESI 1/31/01	REK	
20	ESI 2/12/02	REK	
21	ESI 2/20/03	REK	
22	H&S 2/19/04		
23	3/21/05	S & H	
24	3/28/06	S & H	



**TUCKER COUNTY**  
 STATE OF WEST VIRGINIA  
 Office of Assessor  
 3/24/07 S&H

DISTRICT  
**DRY FORK**  
 SHEET NO: 330  
 Date, Aerial Photography: November, 1961 Date, Map: Dec, 1962  
 Photo No: Scale: 1" = 400'