

311 312  
331 332

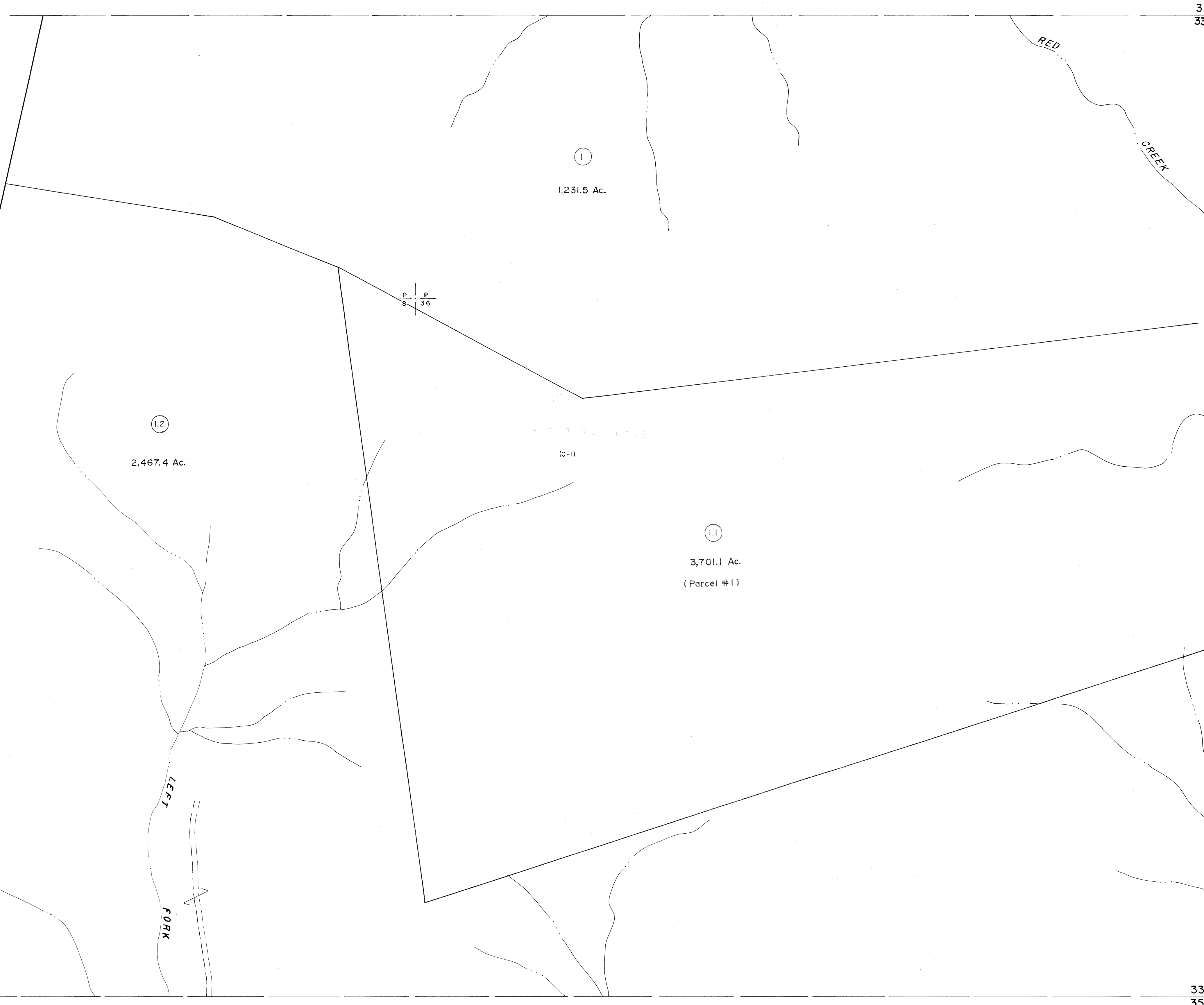
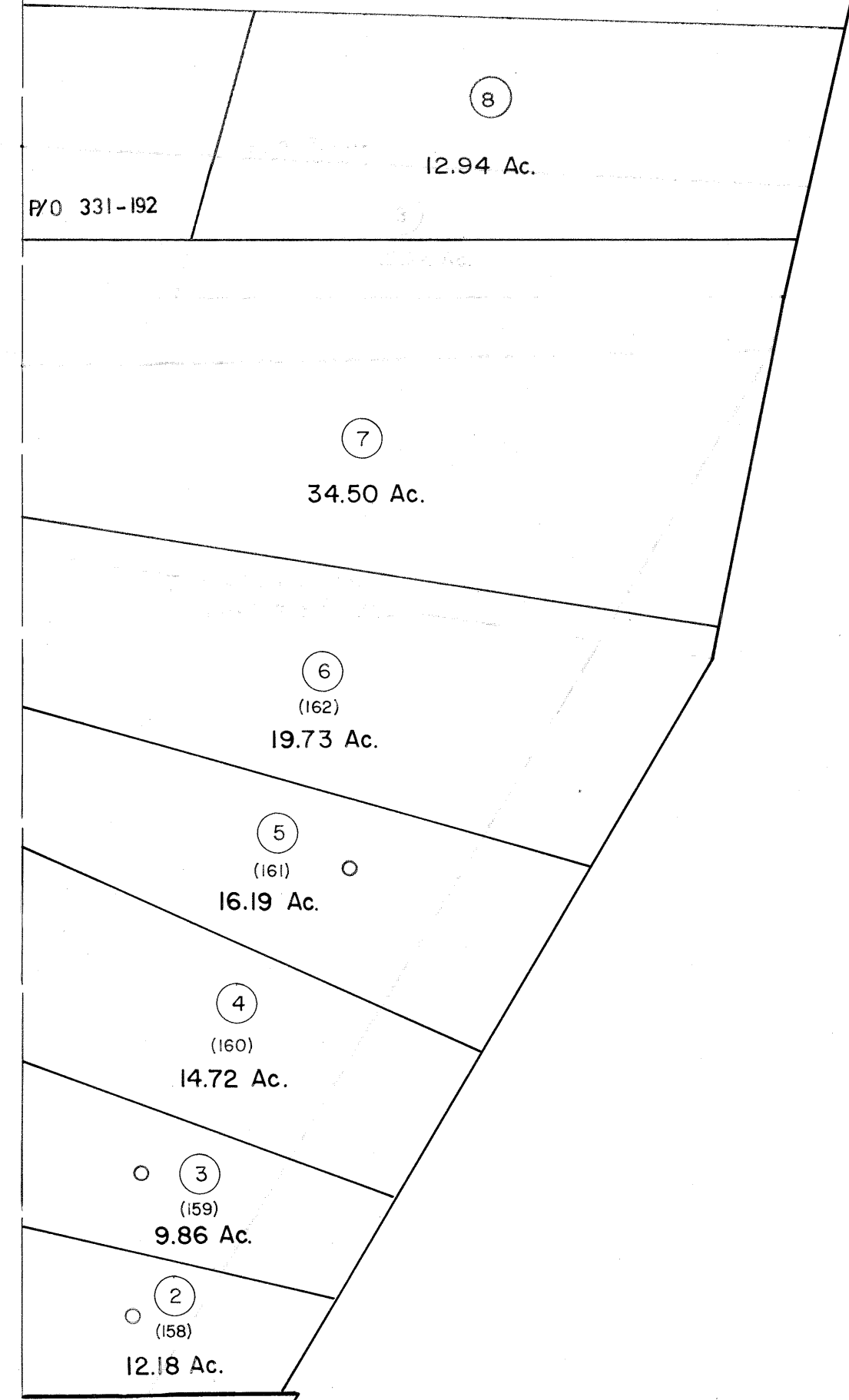
312 313  
332 333

P/O 331-2

P/O 331-192

331 332  
351 352

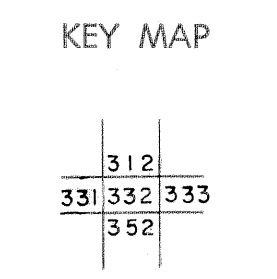
332 333  
352 353



For Tax Purposes Only  
Prepared by  
MICHAEL BAKER, JR., INC.  
Consulting Engineers  
Rochester, Pennsylvania

Legend	
Property line	—————
Edge of pavement or roadway	- - - - -
Corporation line	- · - · -
District line	- - - - -
County line	- - - - -
Original lot line	—————
Dead lot number	(5)
Parcel or index number	(2)
Improvement	○
Railroad	—+—+—+—

Revisions	
1	Revised to 7-1-88
2	July, 1986 TRL
3	REV. TO 3-1-89 R.E.B.
4	OGIS 1/5/91 DSH
5	OGIS 3-19-92 TL
6	OGIS 1/31/93 DSH
7	O.G.I.S. 4-1-96 J.E.B.
8	SLS INC. 1/28/99 DSW



TUCKER COUNTY  
STATE OF WEST VIRGINIA  
Office of Assessor

DISTRICT	DRY FORK
SHEET NO: 332	
Date, Aerial Photography: November, 1961	Date, Map: Dec., 1962
Photo No:	Scale: 1" = 400'