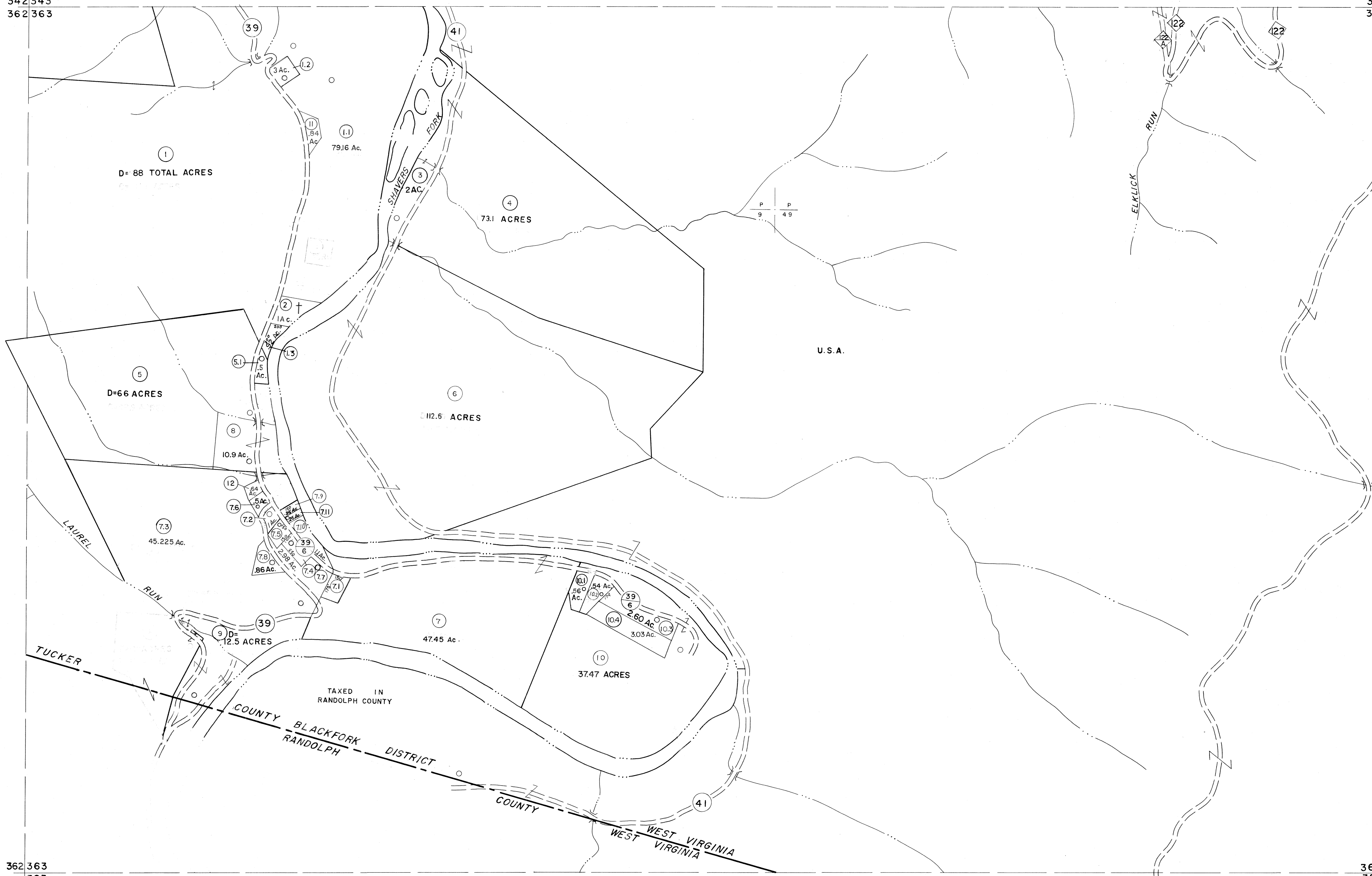


342343  
362363

343344  
363364



362363  
383

363364  
383384

For Tax Purposes Only

Prepared by  
MICHAEL BAKER, JR., INC.  
Consulting Engineers  
Rochester, Pennsylvania

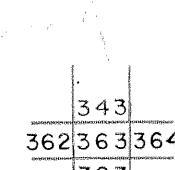
Legend

Property line	—	Original lot line	---
Edge of pavement or roadway	—	Deed lot number	(15)
Corporation line	—	Parcel or index number	(99)
District line	—	Improvement	o
County line	—	Railroad	—

Revisions

No.	Date	By	Description
1	6-3-75	J.C.	OGIS 12/12/93 SAJ 17
2	11/22/78	D.G.	SLS INC. - DDC 5/97 18
3	Revised to 7-1-88	L.E.S.	ES1 2/2/01 REK 19
4	7-1-84	L.E.S.	3/28/06 S&H 20
5	Revised to 7-1-87	R.E.B.	13 21
6	Rev. to 3-1-89	R.E.B.	14 22
7	OGIS 1/6/91	DSH	15 23
8	OGIS 3-19-92	TL	16 24

KEY MAP



TUCKER COUNTY  
STATE OF WEST VIRGINIA  
Office of Assessor

DISTRICT

BLACKFORK

SHEET NO: 363

Date, Aerial Photography: November, 1961 Date, Map: Dec, 1962  
Photo No: Scale: 1" = 400'