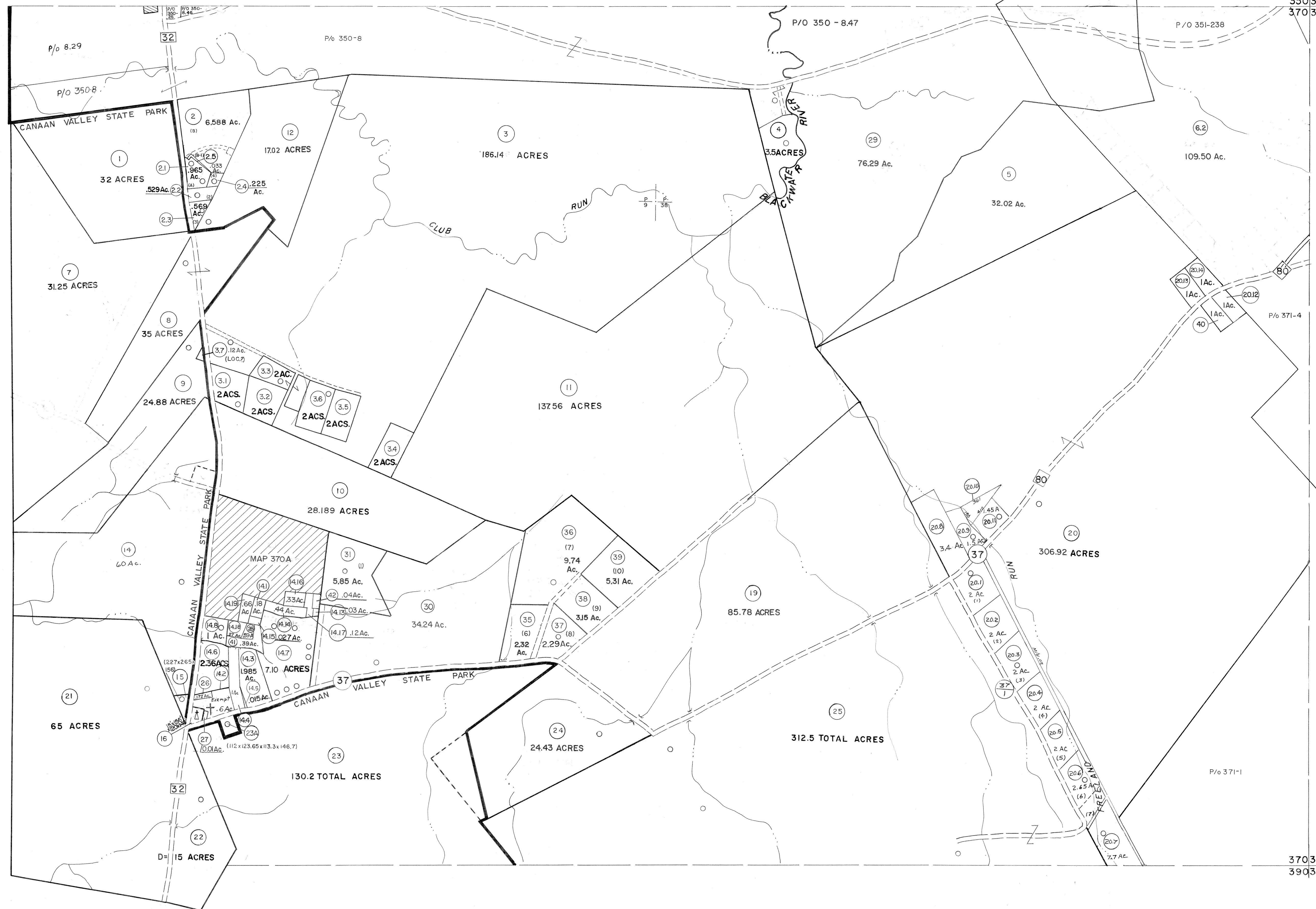


349350  
369370

350351  
370371



369370  
389390

370371  
390391

For Tax Purposes Only

Prepared by  
MICHAEL BAKER, JR., INC.  
Consulting Engineers  
Rochester, Pennsylvania

Legend	
Property line	Original lot line
Edge of pavement or roadway	Deed lot number
Corporation line	Parcel or index number
District line	Improvement
County line	Railroad

Revisions								
1	6-6-75	BH	9	Rev. to 3-1-89	R.E.B.	17	SLS INC. 1/28/99	DSW
2	11-27-78	DG	10	OGIS 1/6/91	DSH	18	SLS INC. 3/2/00	JWM
3	REV. TO 7-1-83	NCS	11	OGIS 3-19-92	TL	19	ESI 2/2/01	REK
4	7-1-84	L.E.S.	12	OGIS 1/31/93	DSH	20	ESI 2/12/02	REK
5	Revised to		13	OGIS 12/12/93	SAJ	21	ESI 2/20/03	REK
6	REV. TO 7-1-85	NCS	14	OGIS 2-95	HD	22	3/21/05	S.B.H.
7	July, 1986	TRL	15	O.G.I.S 4-1-96	J.E.B.	23		
8	Revised to 7-1-87		16	SLS INC. 3/3/98	JWM	24		

KEY MAP

TUCKER COUNTY  
STATE OF WEST VIRGINIA  
Office of Assessor

DISTRICT  
DRY FORK

SHEET NO: 370

Date, Aerial Photography: November, 1961 Date, Map: Dec. 1962  
Photo No. Scale: 1" = 400'