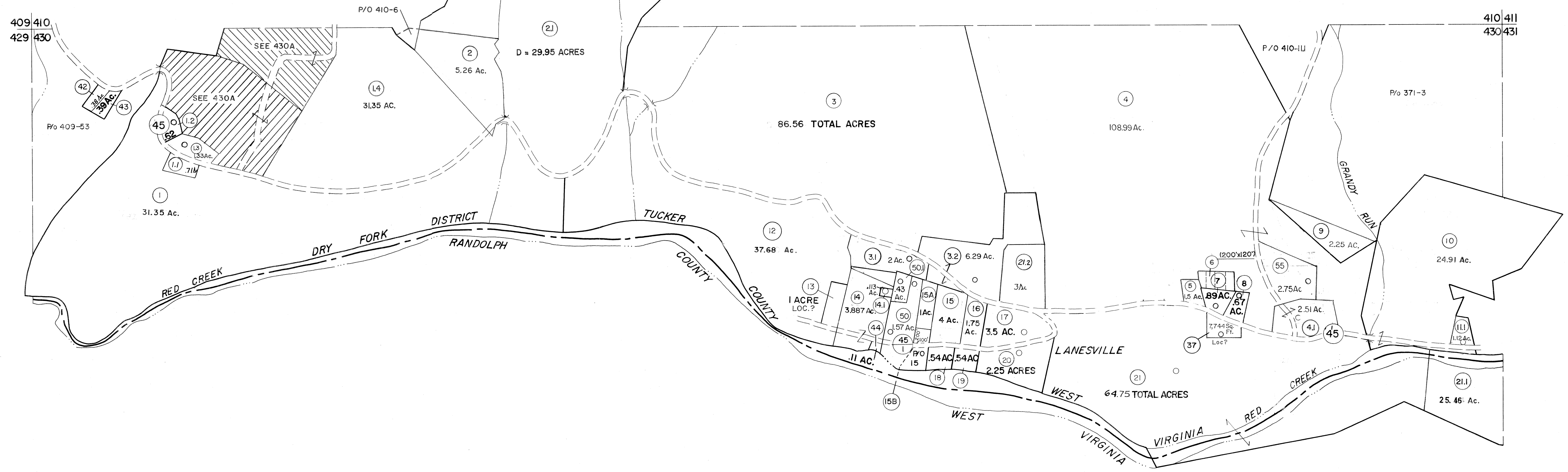


409/410
429/430

410/411
430/431



429/430

430/431

- 22) 10,331 Sq. Ft.
- 23) 5,100 Sq. Ft.
- 24) Lot 8 & 4,000 Sq. Ft.
- 25) Lot 10
- 26) Lot 6
- 27) .25 Ac.
- 28) 1.25 Ac.
- 29) 10,082 Sq. Ft.
- 30) 90 Sq. Rds.
- 31) .12 & .50 Ac.
- 32) 6,400 Sq. Ft.
- 33) .25 Ac.
- 34) 69 Sq. Pls.
- 35) Lot 9
- 36) .25 Ac.
- 38) 1/2 of Lot 26
- 39) Lot 21
- 40) 70 Ac.
- 41) 50 Ac.
- 51) 1/4 Ac.

For Tax Purposes Only

Prepared by
MICHAEL BAKER, JR., INC.
Consulting Engineers
Rochester, Pennsylvania

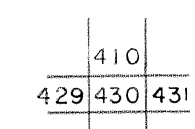
Legend

Property line	—	Original lot line	—
Edge of pavement or roadway	---	Deed lot number	(15)
Corporation line	----	Parcel or index number	o
District line	-----	Improvement	+
County line	-----	Railroad	—+—

Revisions

1	6-3-67	9	OGIS	2/1/93	DSH	17	ESI	2/12/02	REK
2	11-27-78	10	OGIS	12/12/93	SAJ	18	H&S	2-04	
3	REV. TO 7-1-83	11	O.G.I.S	4-1-96	J.E.B	19			S B H
4	7-1-84	12	SLS INC.	- DDC	5/97	20			S B H
5		13	SLS INC.	3/4/98	JWM	21			S B H
6	July, 1986	14	SLS INC.	1/28/99	JWM	22			
7	OGIS	15	SLS INC.	3/03/00	JAW	23			
8	OGIS	16	ESI	2/2/01	REK	24			

KEY MAP



TUCKER COUNTY
STATE OF WEST VIRGINIA
Office of Assessor

DISTRICT

DRY FORK

SHEET NO: 430

Date, Aerial Photography: November, 1961 Date, Map: Dec, 1962
Photo No: Scale: 1" = 400'