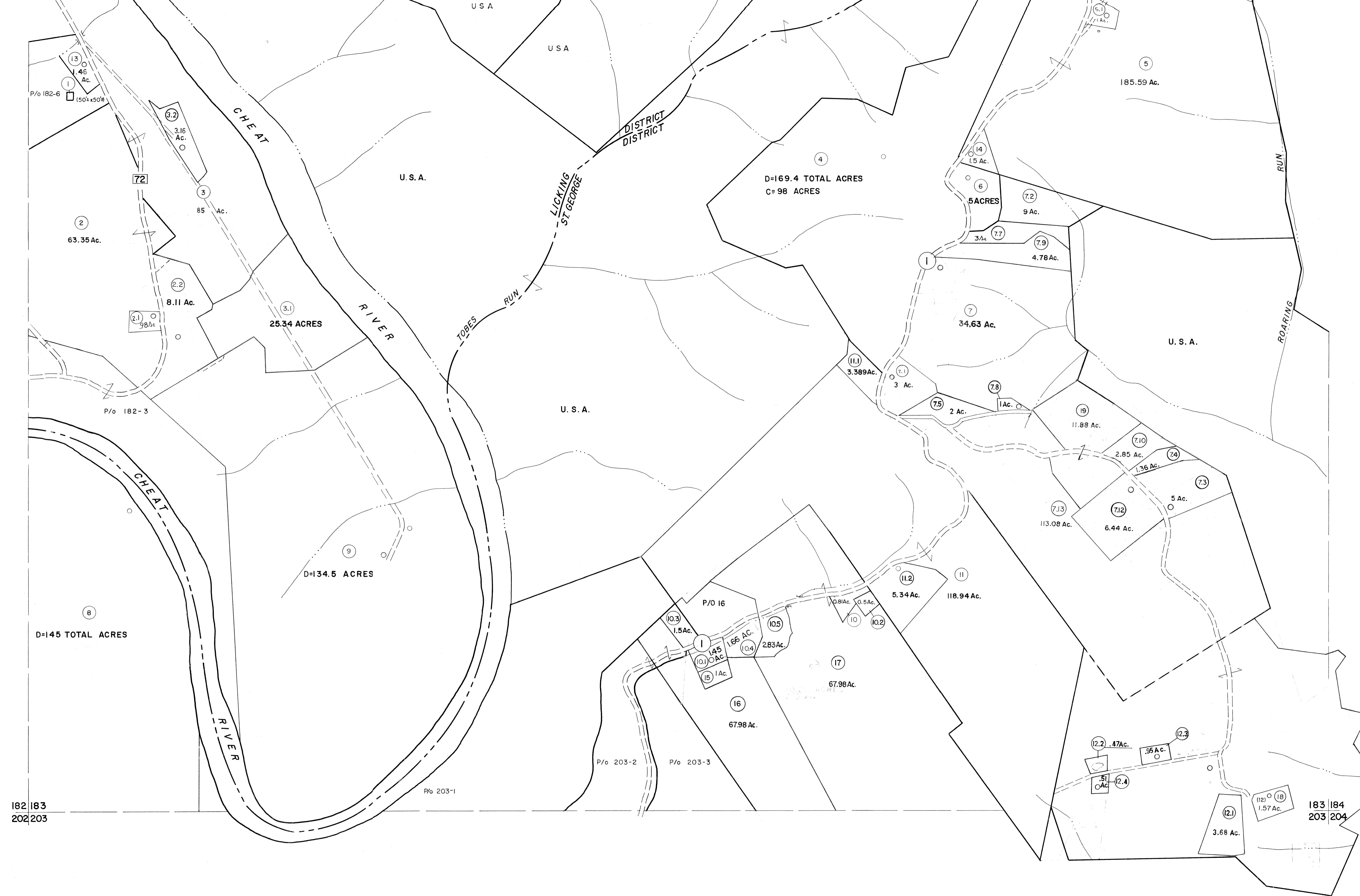


162 | 163
182 | 183

163 | 164
183 | 184



182 | 183
202 | 203

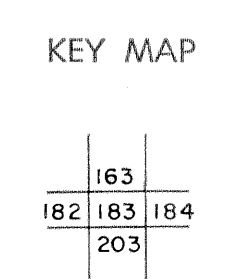
183 | 184
203 | 204

For Tax Purposes Only

Prepared by
MICHAEL BAKER, JR., INC.
Consulting Engineers
Rochester, Pennsylvania

Legend	
Property line	—
Edge of pavement or roadway	—
Corporation line	—
District line	—
County line	—
Original lot line	—
Deed lot number	(15)
Parcel or index number	(22)
Improvement	○
Railroad	—

Revisions	
1 6-6-75 J.C.	9 OGIS 3-19-92 TL 17
2 11/20/78 D.G.	10 OGIS 1/24/93 DSH 18
3 To 7-1-83 C.R.	11 OGIS 12/11/93 SAJ 19
4 7-1-84 L.E.S.	12 SLS INC. 2/19/98 DSW 20
5 REV TO 7-1-86 NCS	13 H&S 2/22/04 21
6 Revised to 7-1-87 D.P.	14 3/21/05 S&H 22
7 REV TO 3-1-89 NCS	15 3/24/07 S&H 23
8 OGIS 12/30/90 DSH	16 24



TUCKER COUNTY
STATE OF WEST VIRGINIA
Office of Assessor

DISTRICT LICKING ST. GEORGE

SHEET NO: 183

Date, Aerial Photography: Nov., 1961 Date, Map: Dec., 1962
Photo No: Scale: 1" = 400'