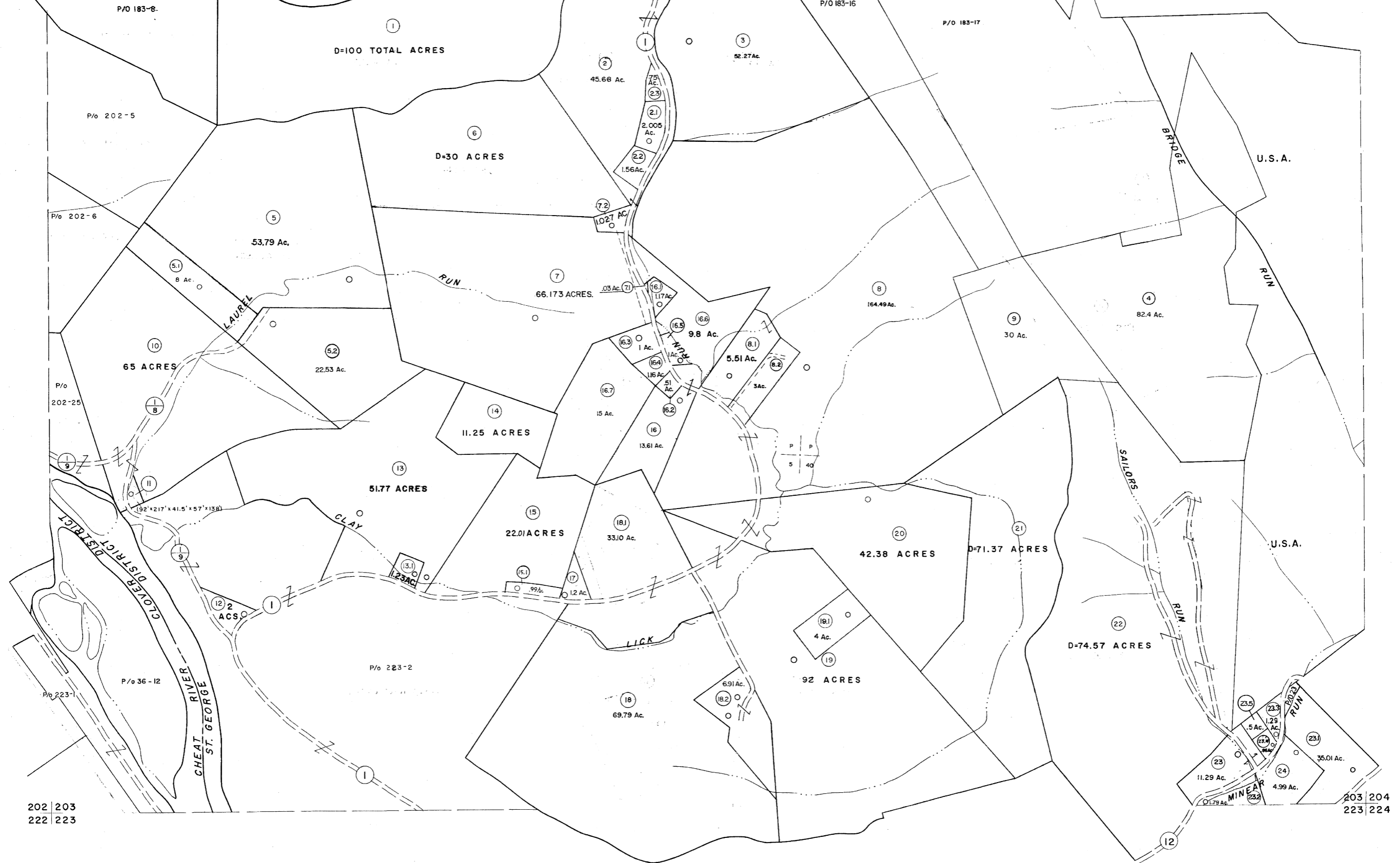


182 | 183
202 | 203

183 | 184
203 | 204



202 | 203
222 | 223

203 | 204
223 | 224

For Tax Purposes Only

Prepared by
MICHAEL BAKER, JR., INC.
Consulting Engineers
Rochester, Pennsylvania

Legend	
Property line	Original lot line
Edge of pavement or roadway	Deed lot number
Corporation line	Parcel or index number
District line	Improvement
County line	Railroad

Revisions								
1	11/20/78	DG	9	OGIS 3-19-91	TL	17	SLS INC. 3/1/00	JWM
2	1/21/83	L.E.S.	10	OGIS 1/25/93	DSH	18	ESI 2/7/02	REK
3	7-21-84	L.E.S.	11	OGIS 12/11/93	SAJ	19	ESI 2/20/03	REK
4	Revised to 7-1-85		12	OGIS 2-95	HD	20	HBS 2/22/04	
5	REV. TO 7-1-86	NCS	13	O.G.I.S 4-1-96	J.E.B	21	3/28/06	S&H
6	Revised to 7-1-87		14	SLS INC. - DDC 5/97		22	3/24/07	S&H
7	REV. TO 3-1-89	R.F.B.	15	SLS INC. 2/23/98	JWM	23	6-22-08	H&S
8	OGIS 12/31/90	DSH	16	SLS INC. 1/27/99	DSW	24		

KEY MAP

TUCKER COUNTY
STATE OF WEST VIRGINIA
Office of Assessor

DISTRICT
CLOVER-ST. GEORGE

SHEET NO: 203

Date, Aerial Photography: Nov, 1961 Date, Map: Dec, 1962
Photo No: Scale: 1" = 400'