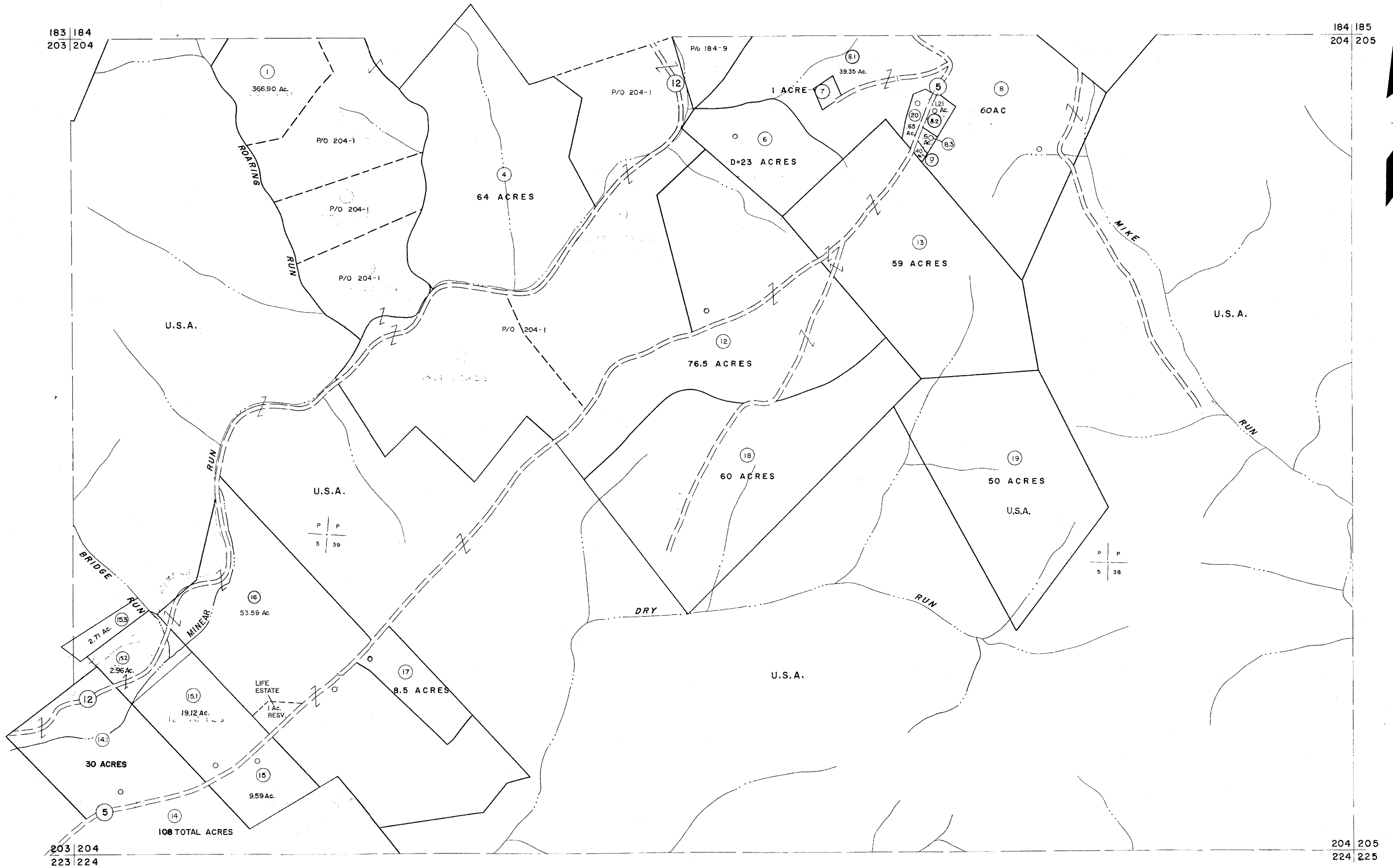


183 | 184
203 | 204

184 | 185
204 | 205



203 | 204
223 | 224

204 | 205
224 | 225

For Tax Purposes Only

Prepared by
MICHAEL BAKER, JR., INC.
Consulting Engineers
Rochester, Pennsylvania

Legend

Property line	—	Original lot line	—
Edge of pavement or roadway	—	Deed lot number	(15)
Corporation line	—	Parcel or index number	(12)
District line	—	Improvement	—
County line	—	Railroad	—

Revisions

1	1/0-3-63	9	O.G.I.S. 4-1-96	J.E.B.	17
2	11/20/78	10	SLS INC. - DDC 5/97		18
3	1/10/82	11	SLS INC. 2/23/98	J.W.M.	19
4	REV TO 7-1-86	12	SLS INC. 3/1/00	J.W.M.	20
5	OGIS 12/31/90	13	6-22-08	J.S.	21
6	OGIS 3-13-92	14			22
7	OGIS 1/25/93	15			23
8	OGIS 2-95	16			24

KEY MAP



TUCKER COUNTY
STATE OF WEST VIRGINIA
Office of Assessor

DISTRICT

ST. GEORGE

SHEET NO: 204

Date, Aerial Photography: Nov., 1961
Photo No: Date, Map: Dec, 1962
Scale: 1" = 400'