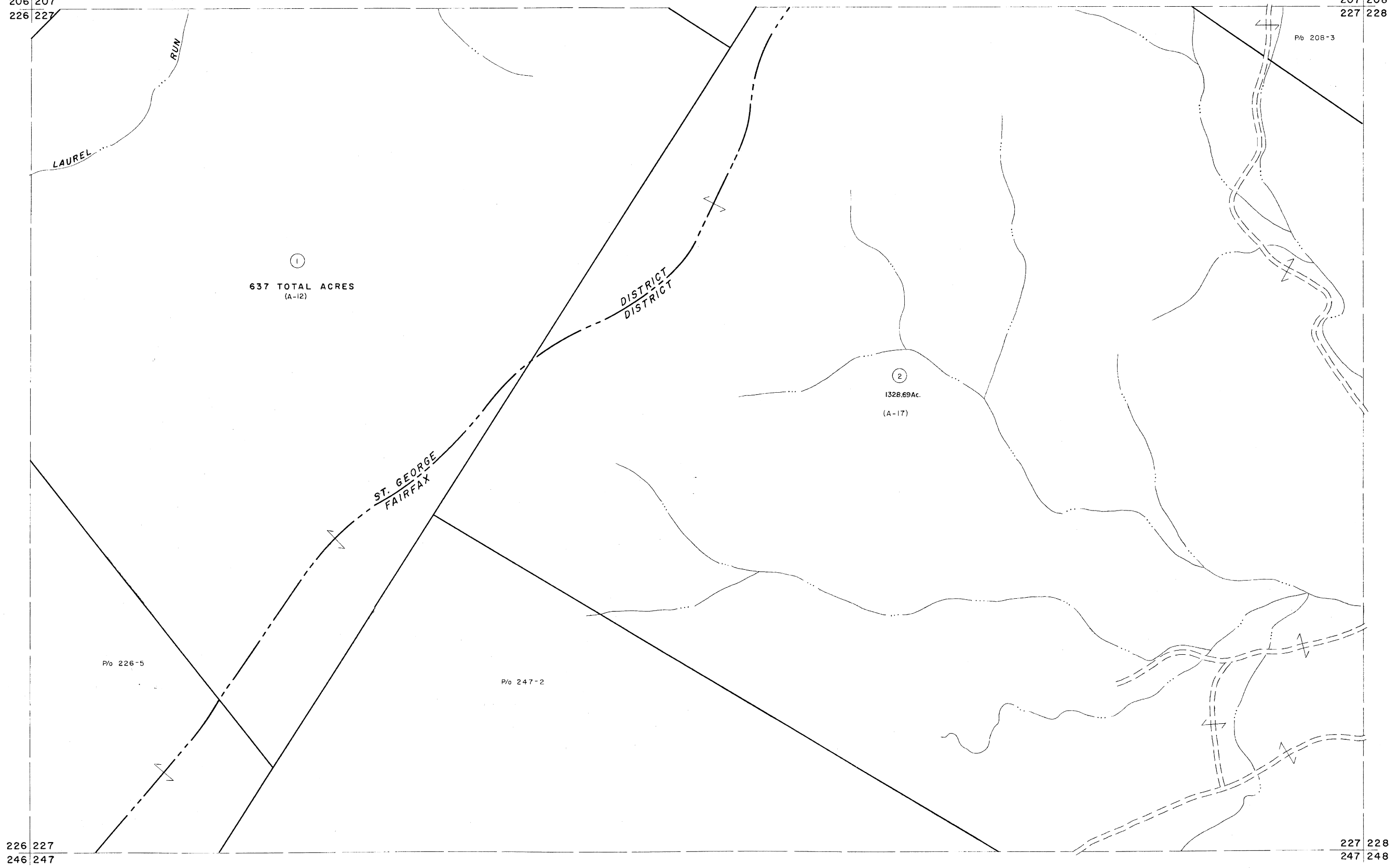


206 207  
226 227

207 208  
227 228



226 227  
246 247

227 228  
247 248

For Tax Purposes Only  
 Prepared by  
**MICHAEL BAKER, JR., INC.**  
 Consulting Engineers  
 Rochester, Pennsylvania

Legend	
Property line	—
Edge of pavement or roadway	- - - -
Corporation line	- · - · -
District line	- - - -
County line	- - - -
Original lot line	- · - · -
Dead lot number	(15)
Parcel or index number	(20)
Improvement	o
Railroad	—+—+—

Revisions			
1	REV. TO 7-1-86	NCS	17
2	REV. TO 3-1-89	REB	18
3	6-22-08	HAS	19
4	6-21-07	HAS	20
5			21
6			22
7			23
8			24



**TUCKER COUNTY**  
 STATE OF WEST VIRGINIA  
 Office of Assessor

DISTRICT  
**FAIRFAX-ST. GEORGE**  
 SHEET NO: **227**  
 Date, Aerial Photography: Nov., 1961 Date, Map: Dec., 1962  
 Photo No: Scale: 1" = 400'