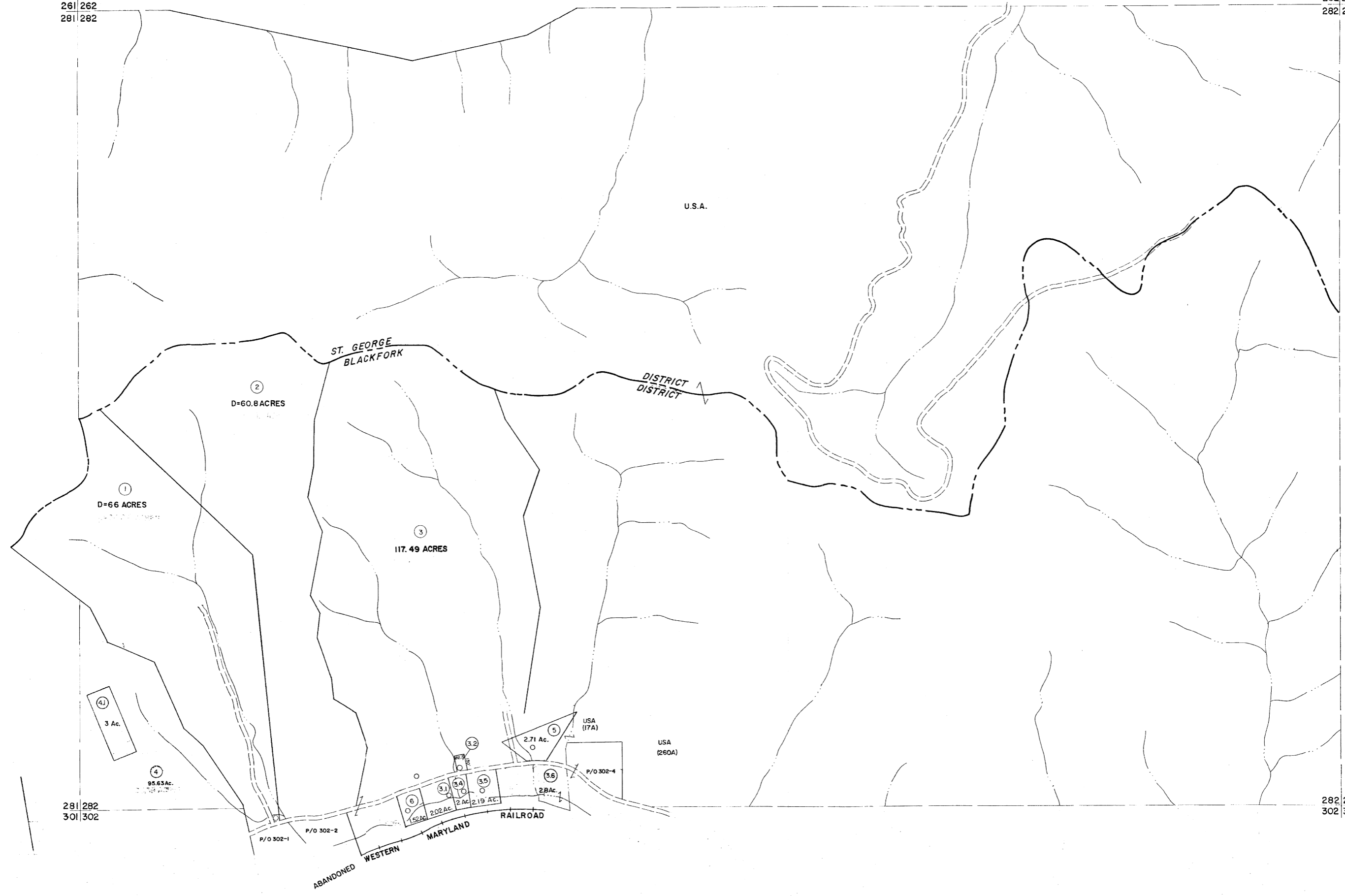


261 262
281 282

262 263
282 283



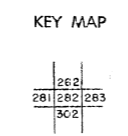
281 282
301 302

282 283
302 303

For Tax Purposes Only
Prepared by
MICHAEL BAKER, JR., INC.
Consulting Engineers
Rochester, Pennsylvania

Legend	
Property line	—
Edge of pavement or roadway	—
Corporation line	—
District line	—
County line	—
Original lot line	—
Deed lot number	(15)
Parcel or index number	(99)
Improvement	o
Railroad	—

Revisions	
1	6-4-75 T.E.
2	Revised to 7-1-82
3	REV. TO 3-1-89 R.E.B.
4	OGIS 3-19-92 TL
5	OGIS 1/27/93 DSH
6	OGIS 12/12/93 SAJ
7	SLS INC. 2/23/98 JWM
8	SLS INC. 3/2/00 JWM
9	ESI 1/31/01 REK
10	ESI 2/8/02 REK
11	ESI 2/20/03 REK
12	3/24/07 S&H
13	6-22-08 H&S
14	6-21-09 H&S
15	
16	



TUCKER COUNTY
STATE OF WEST VIRGINIA
Office of Assessor

DISTRICT **BLACKFORK**
ST. GEORGE
SHEET NO: 282
Date, Aerial Photography: November, 1961 Date, Map: Dec, 1962
Photo No: Scale: 1" = 400'