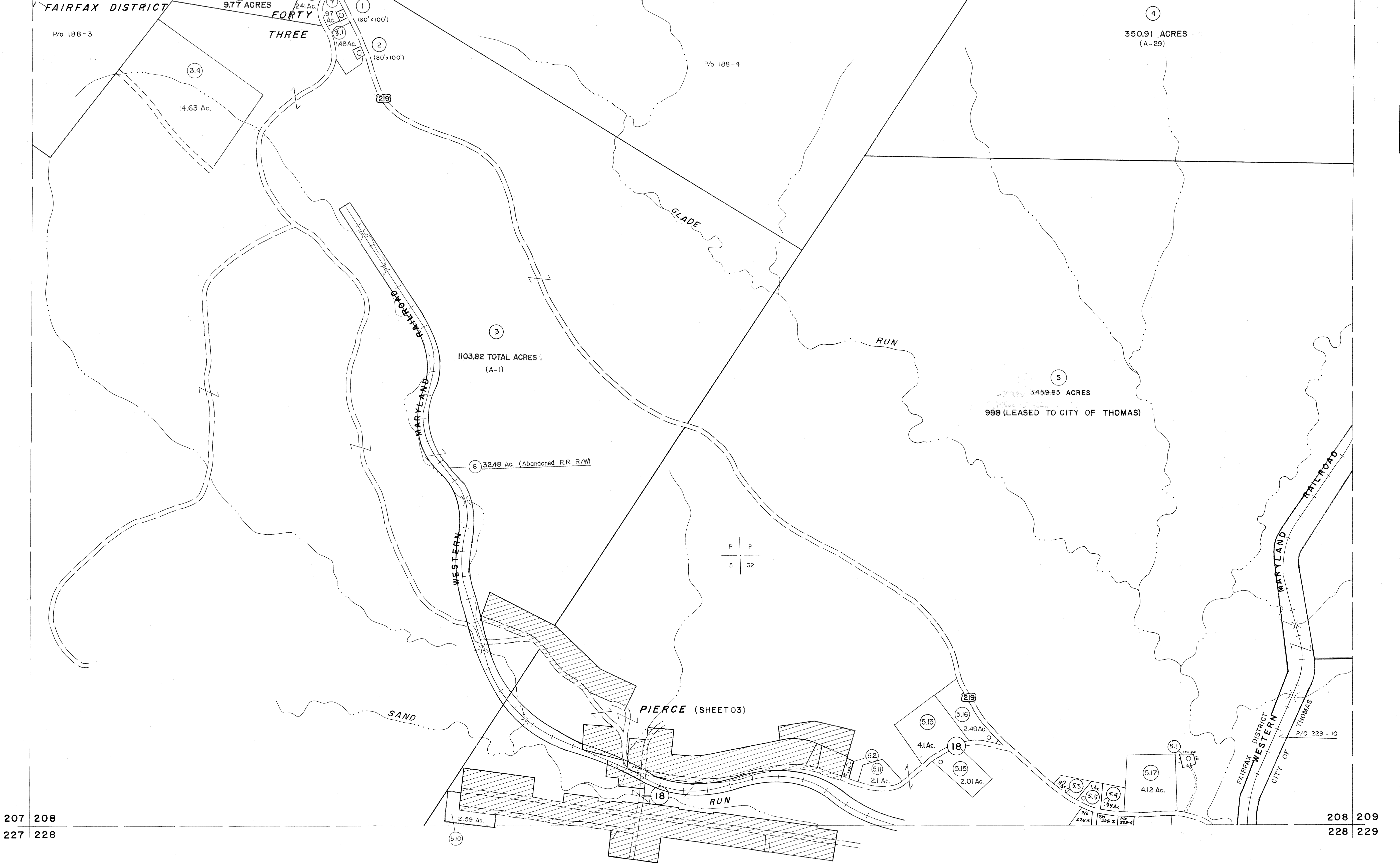


187 188
207 208

188 189
208 209



207 208
227 228

208 209
228 229

For Tax Purposes Only

Prepared by
MICHAEL BAKER, JR., INC.
Consulting Engineers
Rochester, Pennsylvania

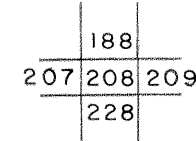
Legend

Property line	———	Original lot line	-----
Edge of pavement or roadway	———	Deed lot number	(15)
Corporation line	-----	Parcel or index number	(99)
District line	-----	Improvement	o
County line	-----	Railroad	—+—

Revisions

1	JUNE 75	P.A.V.	9	SLS INC.	2/23/98	J.W.M.	17	3/28/06	S.B.H.
2	11/20/78	D.G.	10	SLS INC.	1/27/99	D.S.W.	18		
3	REV. TO 7-1-86	N.C.S.	11	SLS INC.	3/1/00	J.W.M.	19		
4	REV. TO 3-1-89	R.E.B.	12	ESI	1/31/01	REK	20		
5	O.G.I.S.	3-19-92	TL	ESI	2/7/02	REK	21		
6	O.G.I.S.	2-95	HD	ESI	2/20/03	REK	22		
7	O.G.I.S.	4-1-96	J.E.B.	H.B.S.	2/22/04		23		
8	SLS INC.	- DDC 5/97	16	S.B.H.			24	3/21/05	

KEY MAP



TUCKER COUNTY
STATE OF WEST VIRGINIA
Office of Assessor

DISTRICT

FAIRFAX

SHEET NO: 208

Date, Aerial Photography: Nov., 1961 Date, Map: Dec, 1962
Photo No: Scale: 1" = 400'