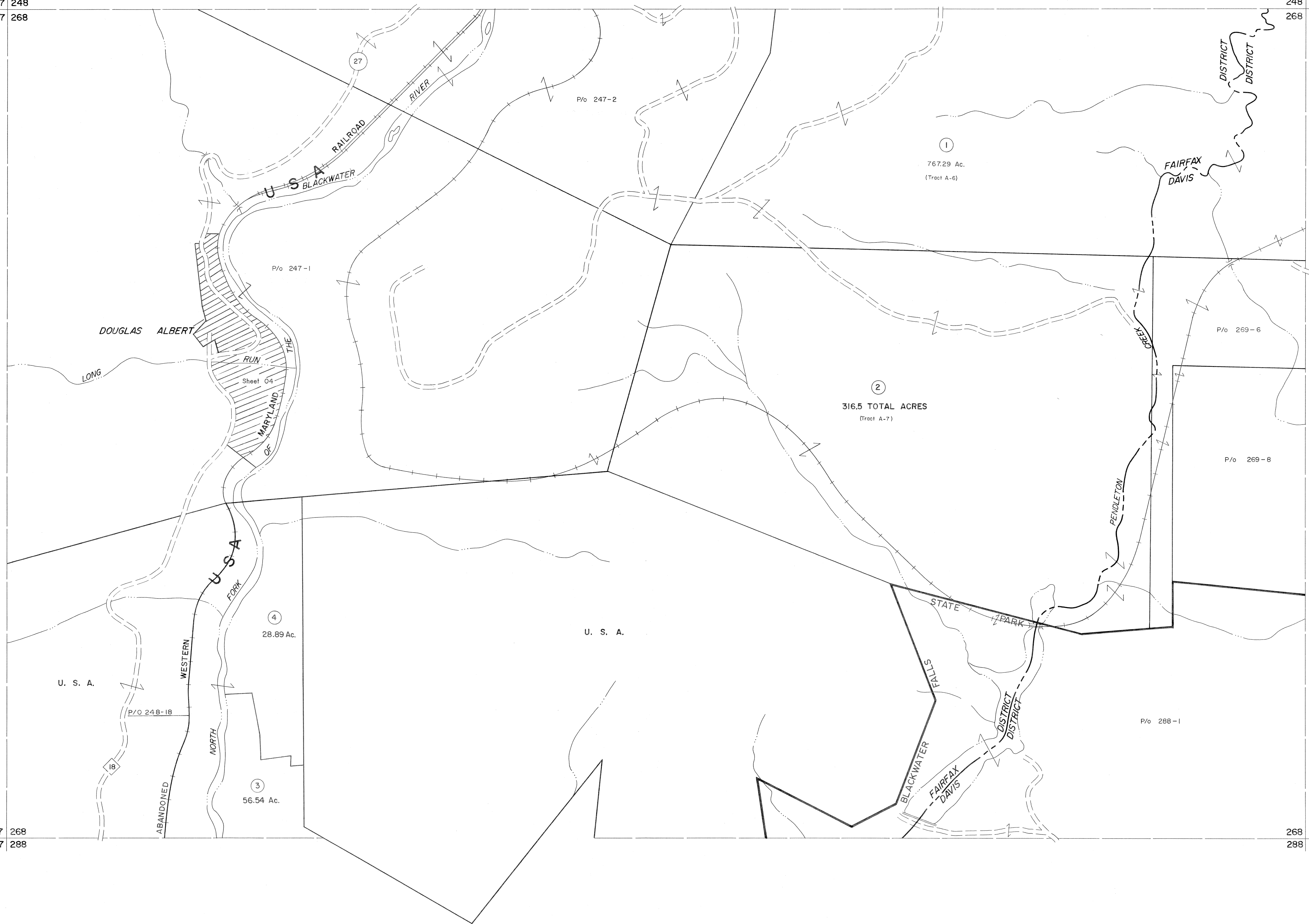


247 248
267 268

248 249
268 269

267 268
287 288

268 269
288 289



For Tax Purposes Only

Prepared by
MICHAEL BAKER, JR., INC.
Consulting Engineers
Rochester, Pennsylvania

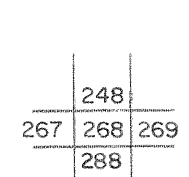
Legend

Property line	-----	Original lot line	-----
Edge of pavement or roadway	-----	Deed lot number	(15)
Corporation line	-----	Parcel or index number	(9)
District line	-----	Improvement	o
County line	-----	Railroad	o

Revisions

1	11-27-78	T.E.R.	9	SLS INC. - DDC	5/97	17
2	12-1-83	TR	10	SLS INC.	2/23/98	JWM
3	July, 1986	TRL	11	ESI	2/20/03	REK
4	Rev. to 3-1-89	R.E.B.	12		3/21/05	S & H
5	OGIS	1/26/93	DSH			21
6	OGIS	12/12/93	SAJ			22
7	OGIS	2-95	HD			23
8	O.G.I.S.	4-1-96	J.E.B.			24

KEY MAP



TUCKER COUNTY
STATE OF WEST VIRGINIA
Office of Assessor

DISTRICT

FAIRFAX
DAVIS

SHEET NO: 268

Date, Aerial Photography: November, 1961 Date, Map: Dec., 1962
Photo No: Scale: 1" = 400'