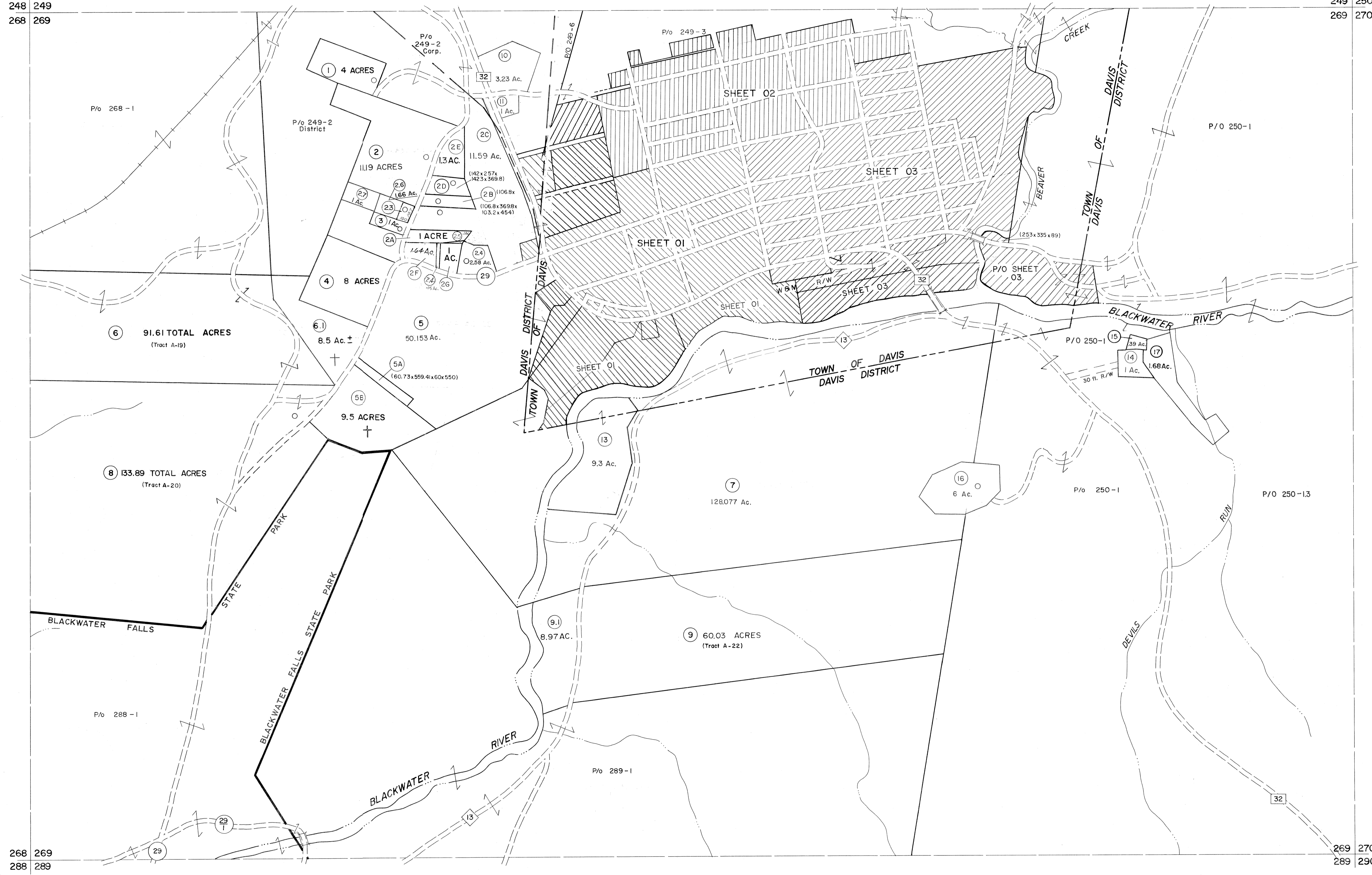


248 249  
268 269

249 250  
269 270

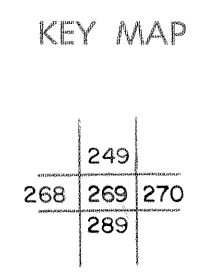


For Tax Purposes Only

Prepared by  
MICHAEL BAKER, JR., INC.  
Consulting Engineers  
Rochester, Pennsylvania

| Legend                      |                        |
|-----------------------------|------------------------|
| Property line               | Original lot line      |
| Edge of pavement or roadway | Deed lot number        |
| Corporation line            | Parcel or index number |
| District line               | Improvement            |
| County line                 | Railroad               |

| Revisions |                |    |                      |
|-----------|----------------|----|----------------------|
| 1         | 10-3-63        | 9  | OGIS 1/27/93 DSH     |
| 2         | 11-78 BAH      | 10 | OGIS 2-95 HD         |
| 3         | Revised 7-1-88 | 11 | O.G.I.S 4-1-96 J.E.B |
| 4         | Revised to     | 12 | SLS INC. - DDC 5/97  |
| 5         | July, 1986     | 13 | SLS INC. 2/23/98 JWM |
| 6         | REV. TO 3-1-89 | 14 | SLS INC. 1/27/99 DSW |
| 7         | OGIS 1/1/91    | 15 | SLS INC. 3/2/00 JWM  |
| 8         |                | 16 | ESI 1/31/01 REK      |
|           |                | 17 | ESI 2/8/02 REK       |
|           |                | 18 | ESI 2/20/03 REK      |
|           |                | 19 | HBS 2/19/04 S & H    |
|           |                | 20 | 3/24/07              |
|           |                | 21 |                      |
|           |                | 22 |                      |
|           |                | 23 |                      |
|           |                | 24 |                      |



TUCKER COUNTY  
STATE OF WEST VIRGINIA  
Office of Assessor

|                           |                |
|---------------------------|----------------|
| DISTRICT                  | DAVIS          |
| SHEET NO:                 | 269            |
| Date, Aerial Photography: | November, 1961 |
| Photo No:                 |                |
| Date, Map:                | Dec., 1962     |
| Scale:                    | 1" = 400'      |