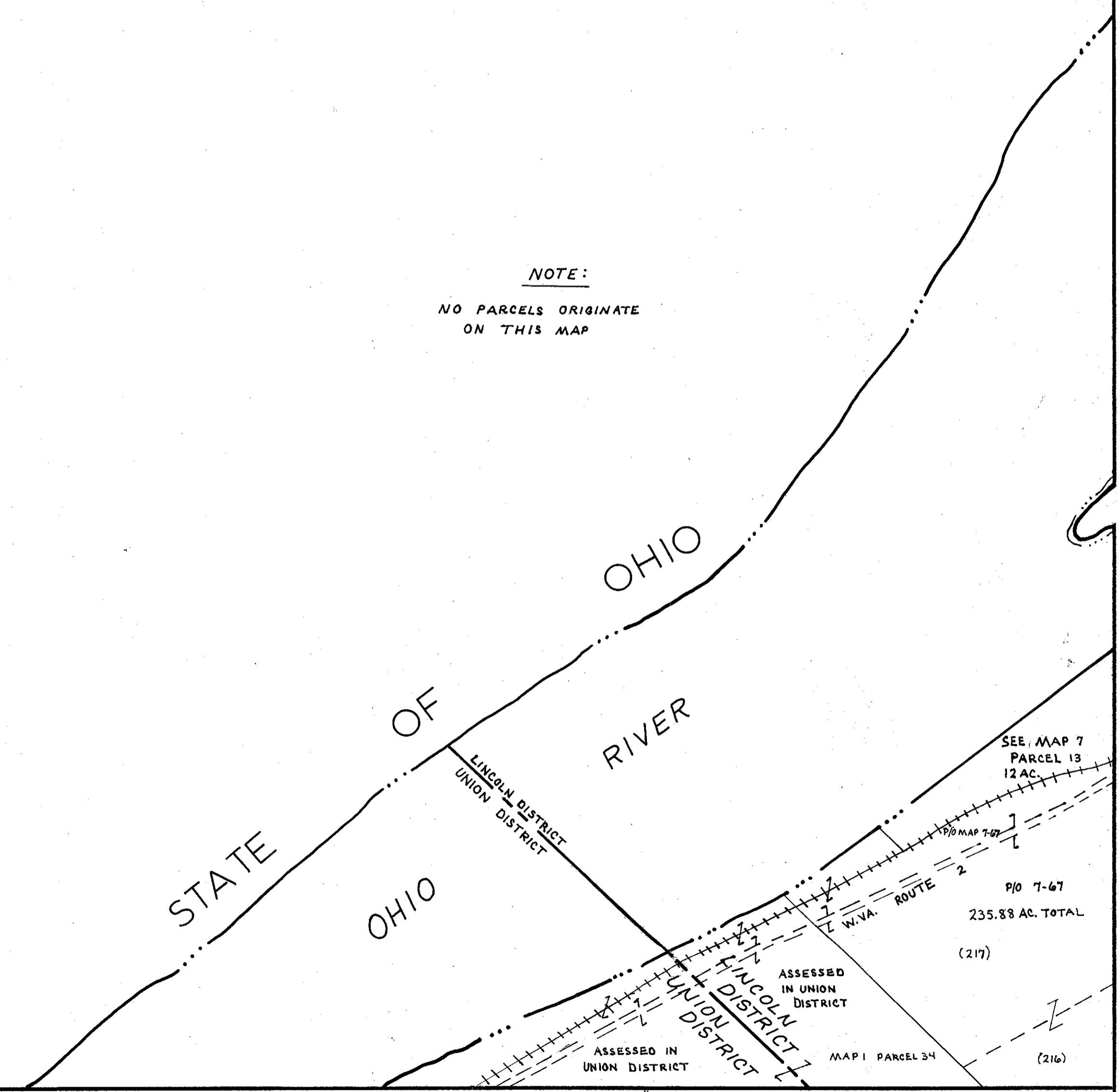


NOTE:
NO PARCELS ORIGINATE
ON THIS MAP



For Tax Purposes Only
Prepared by
LOCAL GOVERNMENT RELATIONS DIV.
STATE TAX COMMISSIONER
CHARLESTON, W.VA.

LEGEND	
Property line	Original lot line
Edge of pavement or roadway	Deed lot number (15)
Corporation line	Parcel or index number (P)
District line	Improvement (O)
County line	Railroad

REVISIONS	
1	3-23-76 DS
2	11/27/76 SLR
3	Revised to 7/1/83 JDF
4	Revised to 7-1-87 JDF
5	
6	
7	
8	

RESTRICTION
All tax maps created under the provisions of reappraisal legislation are the property of the State of West Virginia and the reproduction, copying, distribution or sale of such tax maps or any copies thereof without the written permission of the State Tax Commissioner is prohibited by law.

KEY MAP	
6	7
10	

TYLER COUNTY
STATE OF WEST VIRGINIA

LINCOLN DISTRICT
MAP NO. 6
Date, Aerial Photography: _____
Photo No: _____
Date, Map: 3-23-76
Scale: 1" = 400'