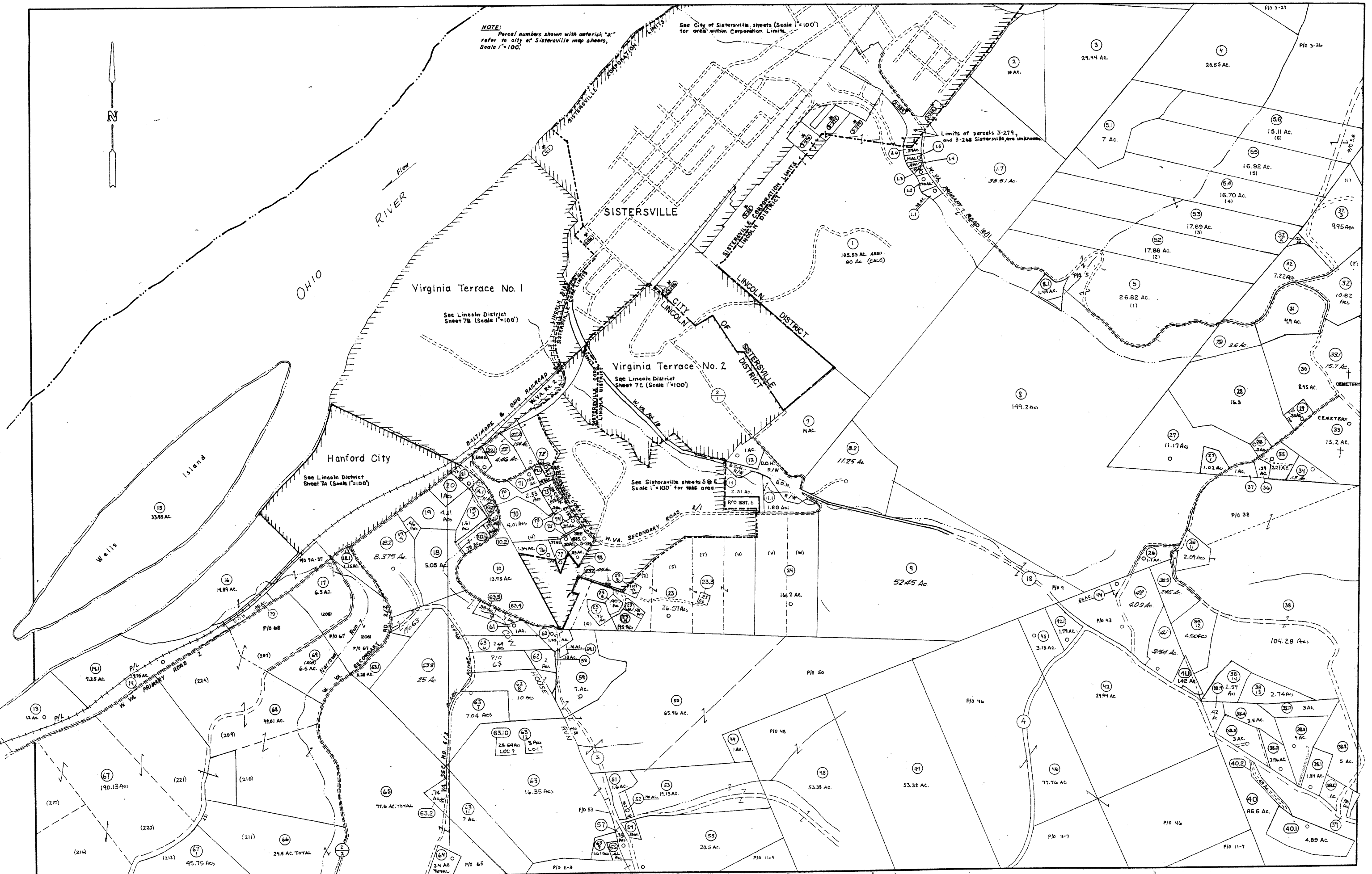


NOTE: Parcel numbers shown with asterisk "*" refer to city of Sistersville map sheets, Scale 1"=100'

See City of Sistersville sheets (Scale 1"=100') for area within Corporation Limits.

Limits of parcels 3-279, and 3-268 Sistersville are unknown.



For Tax Purposes Only

Prepared by
LOCAL GOVERNMENT RELATIONS DIV.
STATE TAX COMMISSIONER
CHARLESTON, W.VA.

LEGEND		REVISIONS	
Property line	—	1	EXCALIBUR GRAPHICS 7/93
Edge of pavement or roadway	—	2	EXCALIBUR GRAPHICS 3/95
Corporation line	—	3	EXCALIBUR 6/99
District line	—	4	EXCALIBUR 12/01
County line	—	5	EXCALIBUR 7/03
		6	EXCALIBUR 7/04
		7	EXCALIBUR GRAPHICS 7/04
		8	EXCALIBUR GRAPHICS 7-07

REVISIONS	
Original lot line	(15)
Dead lot number	(15)
Parcel or index number	(15)
Improvement	(15)
Railroad	(15)

RESTRICTION

All tax maps created under the provisions of reappraisal legislation are the property of the State of West Virginia and the reproduction, copying, distribution or sale of such tax maps or any copies thereof without the written permission of the State Tax Commissioner is prohibited by law.

KEY MAP	
3	8
6	7
11	

TYLER COUNTY
STATE OF WEST VIRGINIA

LINCOLN DISTRICT
MAP NO. 7

Date, Aerial Photography: _____
Photo No: _____
Scale: 1"=400'