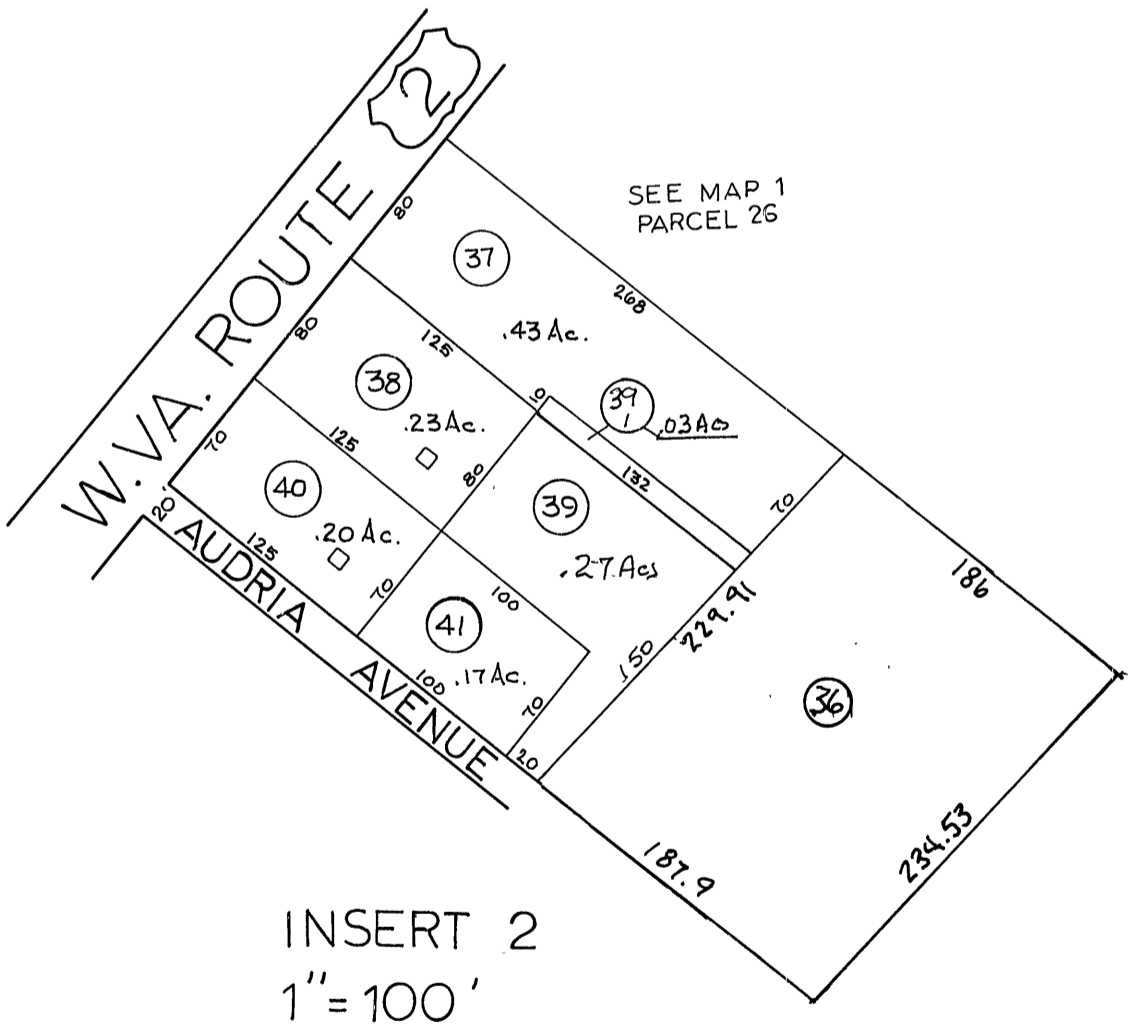




NOTES:
 See Union District Sheet 1 for parcels outside area shown.
 Sheet number "1-A" has been deleted from parcels on this sheet.

INSERT 1
 1" = 100'
 DAVENPORT



INSERT 2
 1" = 100'

—	Sheet 1A	—
—	1	2
3	4	5

SHEET INDEX

Legend

Property line	— — — — —	Original lot line	— — — — —
Road, paved width	=====	Deed lot number, in parenthesis	(15)
Corporation line	-----	Parcel or index number in circle	99
District line	-----	Improvement	o
County line	-----	Railroad	— — — — —

Revisions

1	DEC. 1959	9	Revised to 7-1-87	17
2	REVISED TO JULY 1963 11h	10	4-1-89	18
3	12/17/72	11	EXCALIBUR GRAPHICS 7/90	19
4	Nicely - 5-30-74 -	12	EXCALIBUR 6/99	20
5	5-4-78	13	EXCALIBUR 12/01	21
6	Revised to 7-1-83	14	EXCALIBUR 7-04	22
7	Revised to 7-1-87	15	EXCALIBUR 7-09	23
8	4/1/93	16		24

TYLER COUNTY, W. VA.
 Office of Assessor

For Tax Purposes Only
 Prepared by
 PARK AERIAL SURVEYS, INC., LOUISVILLE, KY.

UNION DISTRICT
 SHEET 1-A

DATE, AERIAL PHOTOGRAPHY: 5-1-58
 PHOTO NO. FW-1-32

DATE, MAP: FEB. 1959
 SCALE: 1" = 100'