

STATE OF OHIO

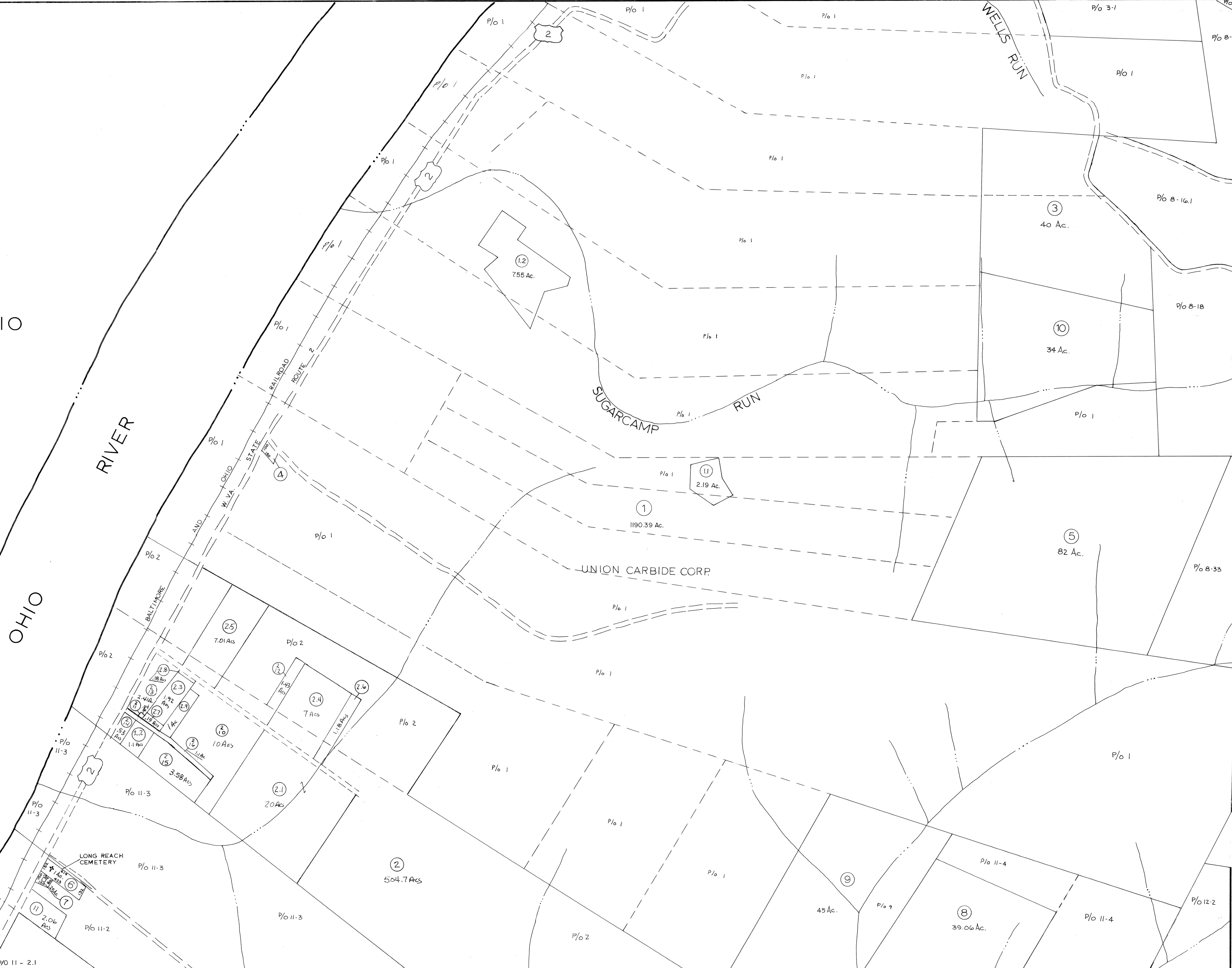
OHIO

RIVER

SUGARCAMP RUN

WELLS RUN

RAILROAD ROUTE 2
OHIO STATE
W. VA.

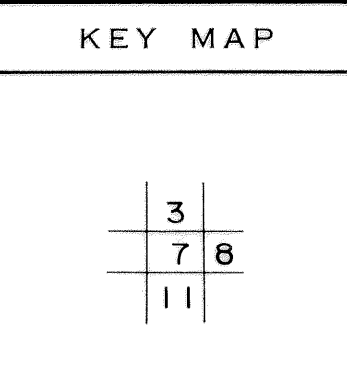


For Tax Purposes Only
Prepared by
LOCAL GOVERNMENT RELATIONS DIV.
STATE TAX COMMISSIONER
CHARLESTON, W.VA.

LEGEND	
Property line	—
Edge of pavement or roadway	—
Corporation line	—
District line	—
County line	—
Original lot line	(15)
Deed lot number	(99)
Parcel or index number	(o)
Improvement	—
Railroad	—

REVISIONS	
1	EXCALIBUR 7/03
2	EXCALIBUR 7/04
3	EXCALIBUR GRAPHICS 7/06
4	EXCALIBUR 7/09
5	4-1-89 TRL
6	EXCALIBUR GRAPHICS 7/90
7	EXCALIBUR 6/99
8	EXCALIBUR 12/01

RESTRICTION
All tax maps created under the provisions of reappraisal legislation are the property of the State of West Virginia and the reproduction, copying, distribution or sale of such tax maps or any copies thereof without the written permission of the State Tax Commissioner is prohibited by law.



TYLER COUNTY
STATE OF WEST VIRGINIA

UNION DISTRICT
MAP NO. 7
Date, Aerial Photography: Photo No:
Date, Map: Scale: 1" = 400'